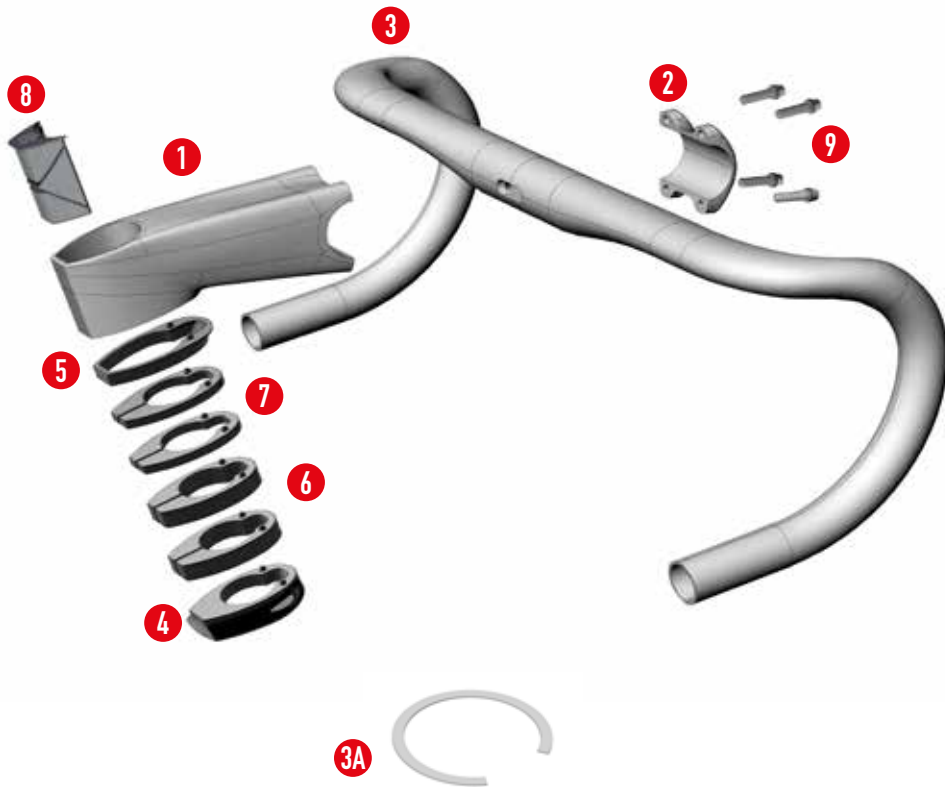


**INSTALLATION GUIDE
DISC – MECHANICAL GEAR**

CERTECO 10 NDR



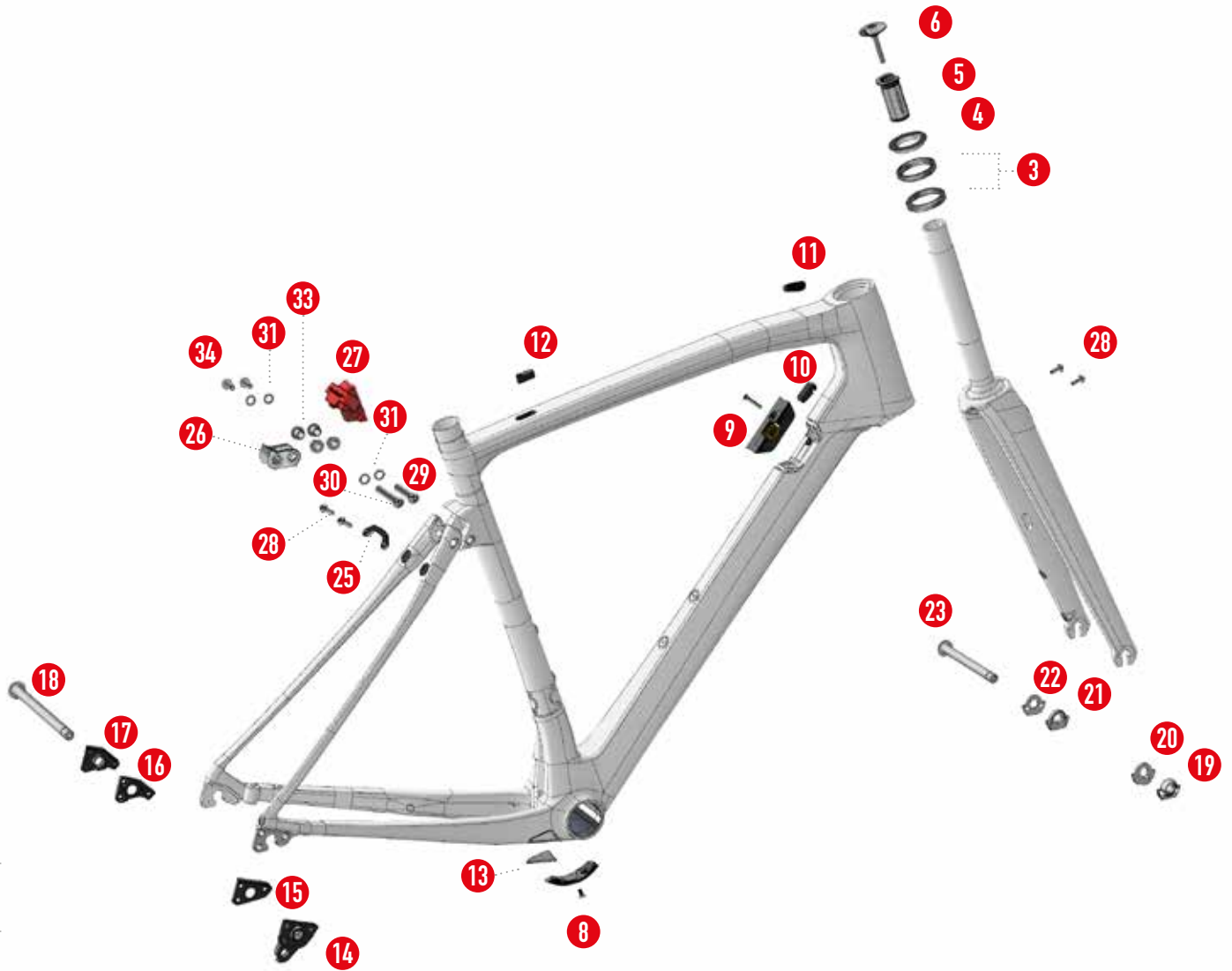
cento10NDR



	B2B CODE	DESCRIPTION
1		
2	E8STM	Handlebar stem Stemma
9		
3	E8BAR	bar handlebar curve
3a		microspacer
4	WTP110-16A	top cover for cento10air / ndr frame
5	WTP110A-18	top spacer
6		
7	WTP110A-17	kit shims (2x 10mm + 2x 5mm)
8	WTP110A-15	handlebar expander



LIST OF PARTS FOR DISC BRAKE/MECHANICAL GROUP CONFIGURATION



LIST OF PARTS FOR DISC BRAKE/MECHANICAL GROUP CONFIGURATION

	B2B CODE	DESCRIPTION
3	MR137	FSA 1" 1/8 bearings for Cento10NDR
4	WTP110A-4	Bearing compression ring
5	HGEXP03	Fork expander
6		
8	HGACCE53.5	Sub-shell cabling plaque
9	WTP110A-6A	Cables gland plate with RH regulator for integrated cables
10		Cable gland for rear brake
11		"oval" type plug for ICRS
12		cap for top tube
13	WTP110N-15	Chain protector
14		
15	WTP110N-12TA	rear forks for through-axle (4 pc, 2 RH and 2 LH)
16		
17		
18	WTP110N-16R	rear through-axle 12x167.5 (OLD 142)
19		
20	WTP110N-18TA	front forks for through-axle (4 pc, 2 RH and 2 LH)
21		
22		
23	WTP110N-16F	front through-axle 12x125 (OLD 100)
25		Booster
26	WTP110N-13-2	Aluminium link
27	WTP110N-13-1S	soft shock absorber
27	WTP110N-13-1M	medium shock absorber
27	WTP110N-13-1H	hard shock absorber
28		Buffer screws
29	WTP110N-13-6	Fastening screw Actiflex L = 45.9
30	WTP110N-13-7	Fastening screw Actiflex L = 55.9
31	4x WTP110N-13-3	Spacer
33	2x WTP110N-13-5	IGUS bushings
34	2X WTP110N-13-4	Locking nut



1 INSTALLATION OF THE REAR BRAKE GLAND

Pass the rear brake cable inside the rubber cables

1a guide (no. 1 in the «Parts list» BOM).

Insert the rear brake cable inside the horizontal heath from the end without rubber cables guide, so that it comes out of the oblique tube.



1b Pass the rear brake cable gland through the special grommet (no. 2 in the «Parts list» BOM).

Insert the rear brake cable gland inside the rubber cables guide (no. 1 in the «Parts list» BOM).



Pull the rear brake cable from the oblique tube so that one end of the gland comes out. **1c**



Cut an anti-vibration gland with the same size of the oblique tube. **1d**



Apply the anti-vibration gland on the gland of the rear brake cable from the side of the oblique tube. **1e**

Insert the anti-vibration gland fully into the oblique tube.

2 INSTALLATION CONTROLS CABLES GLANDS

2a Use control cable glands sufficiently long to pass from the oblique tube to the derailleur controls (80 cm). Insert the controls cable glands into the oblique tube, so that one end comes out of the top hole of the steering tube.

Pass the controls cable glands through the oblique tube and leave 10 cm length from the inlet holes.

Lock in position the glands with paper tape.

Distinguish the two controls cable glands (with paper tape, marker pen or something else) and make sure that they do not cross or overlap insides the steering tube.

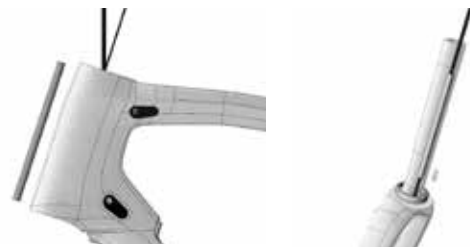


3 INSTALLATION OF FRONT BRAKE

3a Pass the front brake cable through the special grommet (no. 1 in the «Parts list» BOM). Insert the front brake cable (and corresponding gland) inside the fork so that one end comes out of the special hole on the side of the fork sleeve. Insert the bottom bearing (no. 3 in the «Frame» BOM) on the fork sleeve



Pass the front brake cable through the special grommet (no. 1 in the «Parts list» BOM). Insert the front brake cable (and corresponding gland) inside the fork so that one end comes out of the special hole on the side of the fork sleeve. Insert the bottom bearing (no. 3 in the «Frame» BOM) on the fork sleeve



4 FORK INSTALLATION

Insert the fork sleeve in the head tube from the lower hole. **4a**



Make sure again that the glands of the control cables do not cross or overlap, and pass the front brake cable through the centre between them. **4b**



4c Insert the top bearing (no. 3 in the «Frame» BOM) on the fork sleeve. Insert the top cone (no. 4 in the «Frame» BOM) on the fork sleeve.



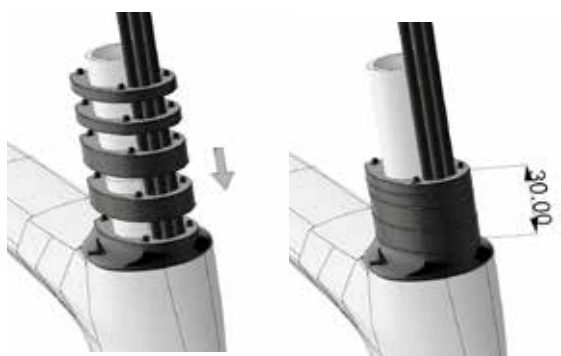
4d Insert the top cover (no. 4 in the «Frame» BOM) on the fork sleeve.



4e In case the top cover touches the horizontal tube: remove it, insert a micro-spacer (no. 3 in the «Parts list» BOM) making sure that the cut is wide enough to let the control cables glands and the front brake cable go through. Then put back the top cover.



4f Insert the spacers (no. 6 and 7 in the «Stem» BOM) on the fork sleeve according to the user preferences (from zero up to a maximum overall thickness of 30 mm).



Insert the top spacer (no. 5 in the «Stem» BOM) on the fork sleeve. **4g**



Cut the fork sleeve so that between its top border and the border of the handlebar stem, there are no more than 4 mm. **4h**



Insert the expander (no. 5 in the «Frame» BOM) in the fork sleeve. **4i**



Tighten the expander (no. 5 in the «Frame» BOM) with a tightening torque of 8-10 Nm. **4l**



5 INSTALLATION HANDLEBAR STEM

- 5a** Insert the glands of the control cables and of the front brake cable through the special hole under the stem, so that they come out of the front hole.

Make sure again that the glands of the control cables do not cross or overlap, and that the front brake cable is at the centre between them.

Insert the handlebar stem on the fork sleeve.



- 5b** Insert the locking cartridge (no. 8 in the «Stem» BOM) between the fork sleeve and the handlebar stem.



- 5c** Insert the expander adjustment screw (no. 6 in the «Frame» BOM) in the expander (no. 5 in the «Frame» BOM).



- 5d** Adjust the expander adjustment screw (no. 6 in the «Frame» BOM) until the steering turns without play (apply a maximum torque of 4 Nm).

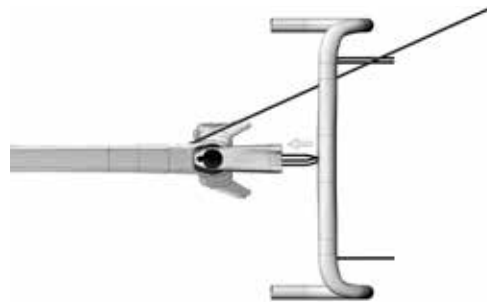


- Tighten the locking cartridge (no. 8 in the «Frame» BOM) with a tightening torque of 7÷8 Nm.



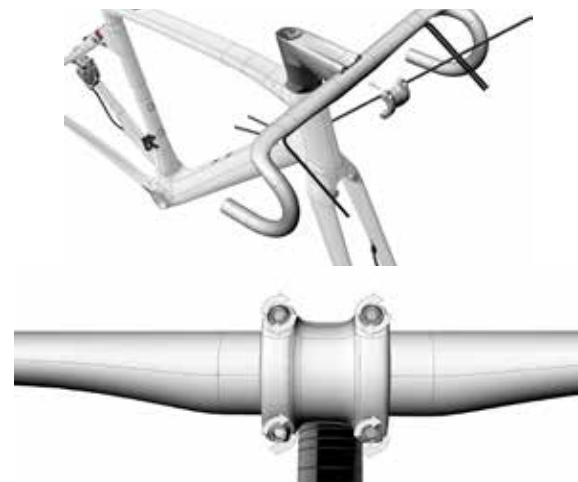
6 INSTALLATION HANDLEBAR

- 6a** Insert the glands inside the handlebar through the special central hole, by reversing the layout of the controls cable glands and bringing the front brake cable to the left.



- 6b** Bring the handlebar close to the stem making sure that it is centred and in the correct direction.

Keep the stem in position by means of the face plate (no. 2 in the «Stem» BOM). Tighten the face plate screws with a tightening torque of 5÷6 Nm.



7 INSTALLATION CONTROL LEVERS

- 7a** Push the controls cable glands and the glands of the front brake inside the handlebar, so that the steering can turn easily.
Cut the glands of the control cables to measure.



- 7b** Push the controls cable glands and the glands of the front brake inside the handlebar, so that the steering can turn easily.
Cut the glands of the control cables to measure.

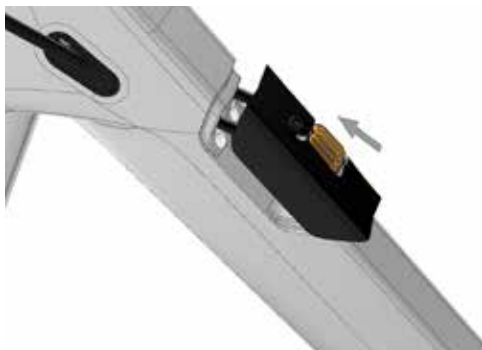


8 INSTALLATION CABLE GLAND PLATE

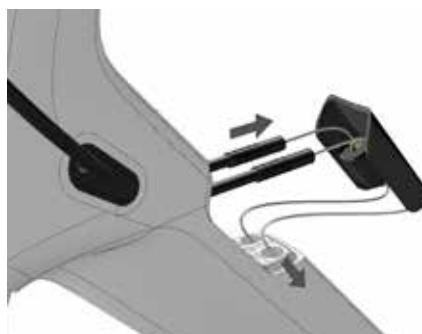
- 8a** Remove the paper tape from the controls cable glands. Insert the controls cable glands into the end caps, then insert the end caps into the cable gland plate (no. 9 in the «Frame» BOM). Make sure that they do not cross or overlap.



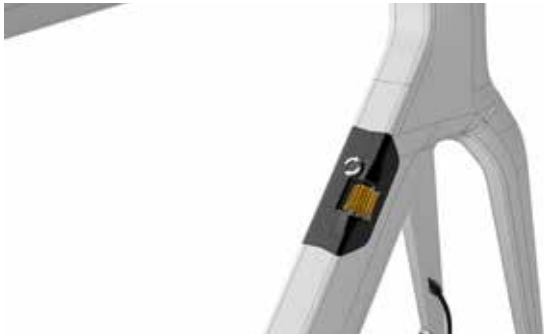
- 8b** Push the cable gland plate (no. 9 in the «Frame» BOM) into its seat until there is some resistance.



- 8c** Extract the glands of the end caps and cut the excess ends of the glands.
Insert again the glands into the end caps.
Pass the control cables (and the corresponding glands) through the cable gland plate (no. 9 in the «Frame» BOM), then insert them into the oblique tube making sure that they do not cross or overlap.



- 8d** Close the cable gland plate (no. 9 in the «Frame» BOM) tightening the locking screw with a tightening torque of 3÷4 Nm.



- 8e** Let the control cables come out of the special hole under the bracket cage, making sure that they do not cross or overlap.



- 8f** Pass the control cables into the special plaque (no. 8 in the «Frame» BOM), following the guides. Tighten the locking screw with a tightening torque of 3÷Nm.



NB The cables are crossed in the handlebar, then run parallel inside the oblique tube and they cross again in the plate under the cage to reach correctly to the gear and derailleur.

