



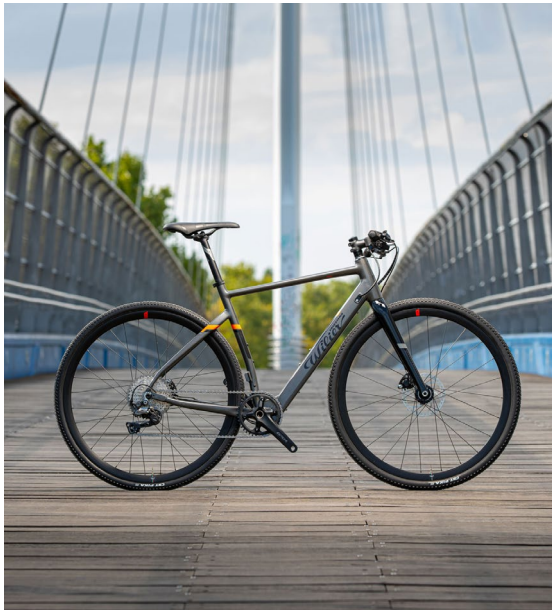
# TRIESI. HYBRID

TECHNICAL INTRODUCTION  
REV.01



## MOVE FAST

A fast ride on a pedal-assist bicycle requires lightweight and efficient components. Triestina Hybrid bicycles guarantee top performance for city and leisure cycling alike. The aluminum frame contains within it the same pedal assist system as the Cento 10 Hybrid, making anything possible. Every detail of the Triestina Hybrid has been designed to keep pace with the latest advances in bicycle design.



## ENDURANCE GEOMETRIES

We have borrowed the geometries from top-of-the-range endurance models for a perfect balance between comfort and performance.



## WIDE CHOICE OF SETUPS

Triestina HY can also be configured in a flat bar version for city use with slick or tessellated tires.



## RIDING SAFETY

Like the Cento10 HY, the Mahle - Ebikemotion system control button is located on the handlebar, near the stem. This configuration improves riding safety because riders can press the button without removing their hands from the handlebar.



TRIESTINA  
LIVIGNO

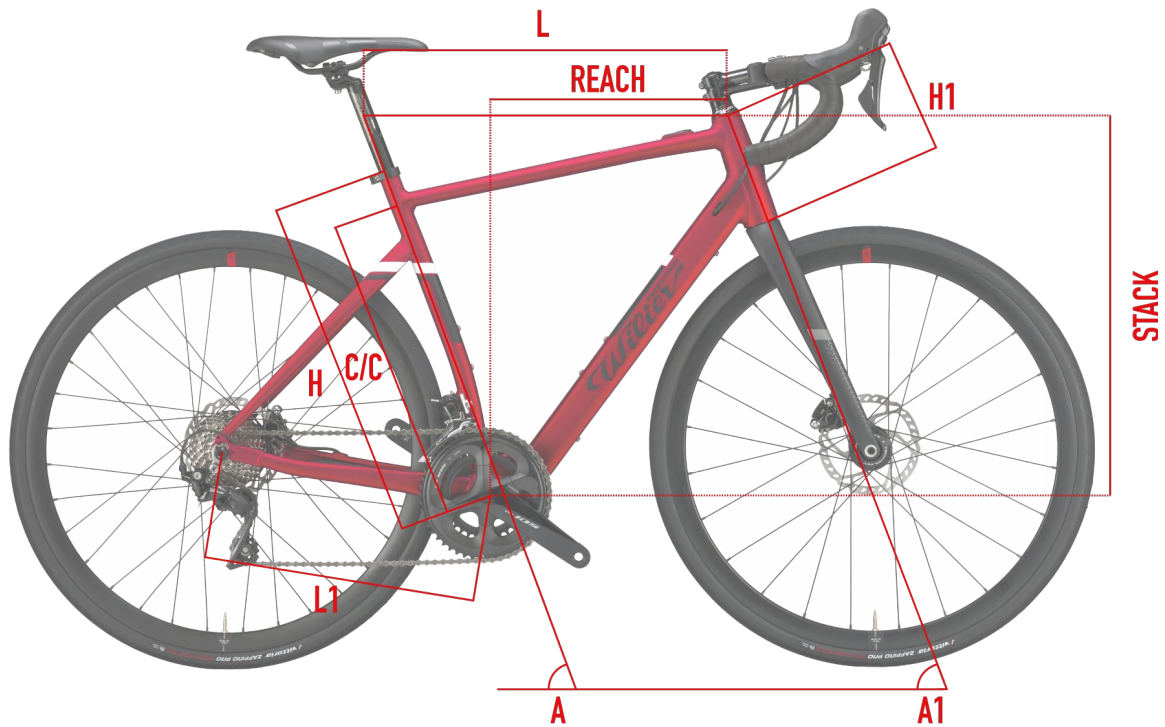
COLOR	RED / BLACK
FINISH	MATT
COLOR CODE	Y10



COLOR	GREY / BLACK
FINISH	GLOSSY
COLOR CODE	Y11



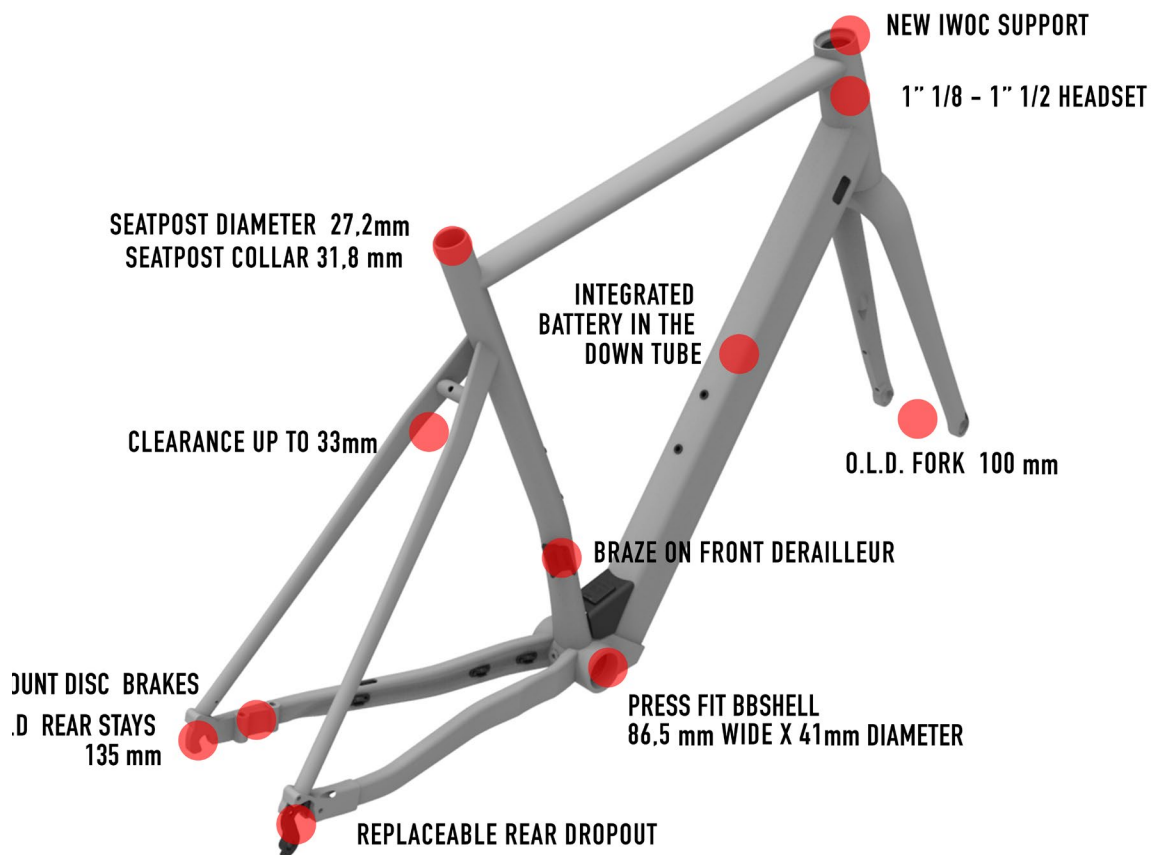
## GEOMETRIES AND SIZES



	C/C	L	H	A	H1	L1	A1	REACH	STACK
SIZE	[cm]	[cm]	[cm]	[°]	[cm]	[mm]	[°]	[mm]	[mm]
XS	41	51.5	46	74.5	11.7	406	71	369	527
S	44	53.1	49	74	13.6	406	71.5	374	545
M	46	54.7	51	73.5	15.7	408	72	379	566
L	48	55.8	53	73.5	17.7	408	72.5	384	586
XL	51	57.4	56	73	19.6	411	72.5	389	604
XXL	54	59.2	59	72.5	21.8	411	72.5	395	625



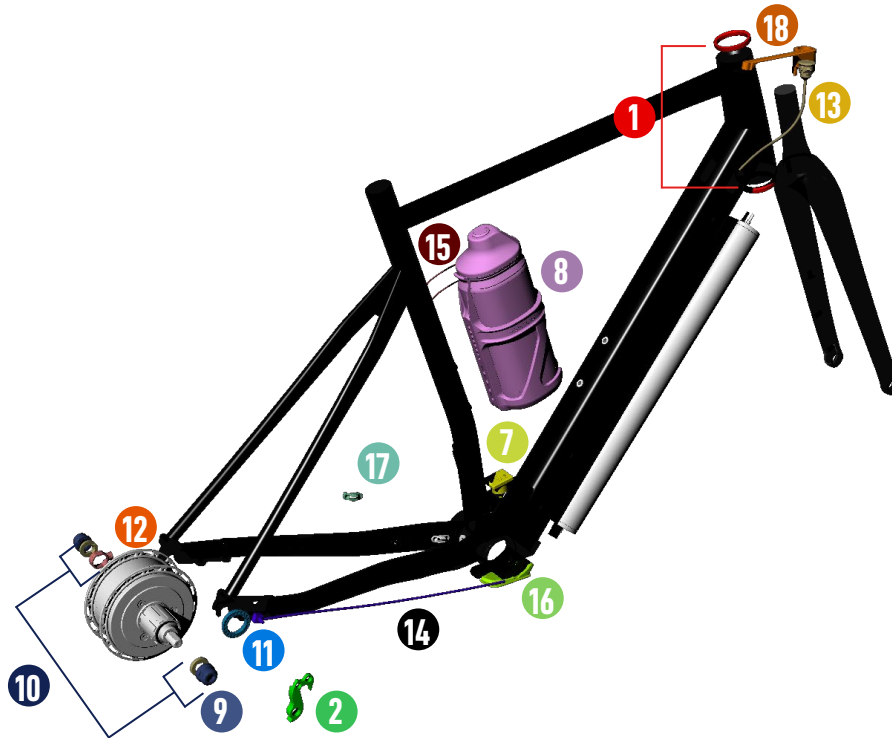
## KEYPOINTS



FRAME AND TECHNICAL SPECS DETAILS	
HEADTUBE	1"1/8 – 1"1/2 drop in type
UPPER/LOWER BEARING	PRD15862
FRONT FORK O.L.D.	100 mm FRONT O.L.D.
REAR STAYS O.L.D.	135 mm REAR O.L.D.
BB SHELL	SHIMANO PRESS FIT BB SHELL (86,5 WIDE X 41 DIAMETER)
SEAT COLLAR DIAMETER	31.8 mm
SEATPOST DIAMETER	27.2 mm
FRONT DERAILLEUR TYPE	BRAZED ON



## SPARE PARTS



## SPARE PARTS

<b>1</b>	PRD15862	HEADSET
<b>2</b>	WT-DTRDROP	DROPOUT
<b>3</b>	HGACCE53.6	SEATPOST COLLAR
<b>4</b>	X35CHARG-EU	EBIKE X35 CHARGER WIRE FOR EU
<b>5</b>	X35CHARG-US	EBIKE X35 CHARGER WIRE FOR US
<b>6</b>	X35CHARGER-C	EBIKE X35 CHARGER-C (WITHOUT WIRE)
<b>7</b>	X35CHGPNT-C	EBIKE X35 CHARGING POINT -C
<b>8</b>	X35EXBATSP1	X35 EXTERNAL BATTERY
<b>9</b>	X35LOCKNUT	EBIKE X35 MOTOR LOCK NUT
<b>10</b>	X35LOWA-KIT	EBIKE X35 MOTOR LOCK NUTS + WASHER NUTS
<b>11</b>	X35MAGNUT	EBIKE X35 MAGNET LOCK NUT
<b>12</b>	X35M1SHILED	EBIKE X35 SHIELD M1
<b>13</b>	X35ONE-C	EBIKE X35 ONE REMOTE -C
<b>14</b>	X35PASSENSOR-B	EBIKE X35 PAS SENSOR B
<b>15</b>	X35RESILB	EBIKE X35 SILICON BAND FOR EXT.BATT.SP1
<b>16</b>	WTP-HYTR-BBSHELL	COVER BB
<b>17</b>	WTP-CLIPRS	CLIP PER FISSAGGIO CAVO MOTORE REAR STAYS
<b>18</b>	WTP-BHIWOC	PORTA PULSANTE IWOC BAR TYPE

## FAQ

**What tires can be installed on the Triestina HY?**

Triestina HY is fitted standard with slick road or light gravel tessellated tires. Triestina Hy's clearance allows installation of tires with up to 33 mm of actual width.

**How many sizes are available?**

Six sizes will be available: from XS to XXL.

**What is the size of the front thru axle?**

The front carbon fork is fitted with a standard 12x125 thru axle.

**Can these bikes be customised in terms of components?**

No. Assembly is armoured according to the specifications.

**Are there any differences in the Ebikemotion assistance system between Triestina Hybrid and other Hybrid models?**

No, the system is the same as Cento10 HY and Cento1 HY, i.e. X35+, with Bluetooth connectivity and ANT+.

**What is the maximum speed attainable in assisted mode?**

The maximum speed attainable with a Triestina Hybrid with the motor in traction is 25 km/h.

**How much does the entire pedal assist system weigh?**

The pedal assist system weighs 3.7 kg with the battery and electric motor. It is the lightest system currently available on the market.

**How many levels of assistance does the Triestina Hybrid have?**

There are three assistance levels, which can be adjusted to your needs in the eBikemotion app (after pairing the app to the bike, go to Settings > Motor Settings).

**How much autonomy does the Triestina Hybrid have?**

Guaranteed autonomy varies depending upon a number of factors: driving style, assistance level, the user's weight, the slope of the route and pedalling ability. Testing shows the possibility of covering an uphill distance of between 1000 m and 2000 m depending on the difficulty of the route, with the battery working for more than an hour and a half.

**Can the Triestina Hybrid be used without the battery?**

We do not recommend removing the battery. However, the Triestina Hybrid can also be used in off mode.





## FAQ

**Is it possible to increase the Triestina Hybrid's autonomy?**

Yes, by installing an optional second battery placed inside a "dummy bottle" on the seat tube of the Triestina Hybrid. The total capacity is 500 W/h.

**Do I have to wait until the battery is fully discharged before charging it?**

No, TriestinaHybrid's lithium battery can be charged at any time, because it does not have a memory effect.

**How many times can I recharge the Triestina Hybrid?**

The guaranteed number of recharges is 500 times. After that, recharges will decrease to approximately 60% of the initial capacity. Over 500 recharges, battery capacity will gradually decrease.

**Can I check the battery charge level?**

Yes, you can check the approximate charge level via the iWoc indicator light on the handlebar. The key to the light colour is available in the Triestina Hybrid leaflet. If you want to know the precise value of the battery charge, connect to the Ebikemotion app.

**After how much time do I have to recharge the battery?**

If the bike is not going to be used for a long period, we recommend you charge the battery at least up to 60% before storing it. If after six months, the charge level is less than 20%, we recommend charging it again up to at least 60%.

**Can I use a Triestina Hybrid in the rain?**

Of course. The system is waterproof.

**How can I wash the Triestina Hybrid?**

You wash your Triestina Hybrid like any other racing bike. Do not use a pressure washer to wash your bike. We recommend wiping it with a soft cloth and mild soap, then drying it completely before use.

**Should the electrical assistance system be checked regularly?**

The electrical system requires no special maintenance. To maintain maximum pedalling efficiency over time, Wilier Triestina strongly recommends regular maintenance and inspections every 12 months at an official Wilier Triestina dealer.

**How are failures or anomalies indicated?**

The backlit controller on the handlebar will flash pink. At the same time, the Ebikemotion app will display a red failure/fault warning triangle.



## FAQ

### Is there a diagnostic tool?

Yes, the Ebikemotion app has a basic diagnostic function. Your authorised Wilier Triestina dealer has more advanced diagnostic tools.

### What should I do in the event of a fault or anomaly?

If your bike should have a failure or anomaly, you can first consult the Ebikemotion app diagnostic/troubleshooting tool. If the problem persists, you will need to contact an official Wilier Triestina dealer to check the problem using advanced diagnostic tools. Any personal action different from those specified in the troubleshooting guide will void the product warranty.

### Who do I contact for questions about the pedal assist system?

Contact the Wilier Triestina dealer where you purchased your bicycle or use the contact form at <https://www.wilier.com/en/contacts>

### Where can I find the user manual?

A printed getting started guide is provided with the Triestina Hybrid at the time of sale.

### Can I replace the Triestina Hybrid's cassette?

Yes, you can replace the cassette with a compatible Shimano 11-speed body. Ensure your reinstall the original closure ring in the same position or the system will not function.

