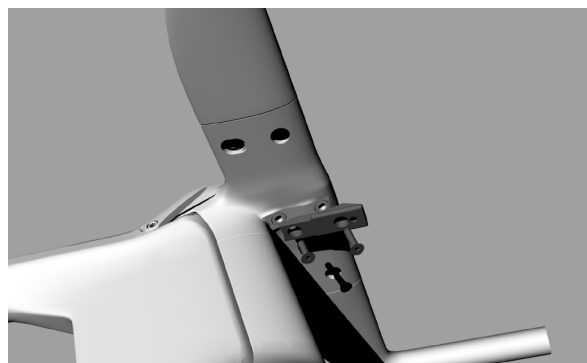
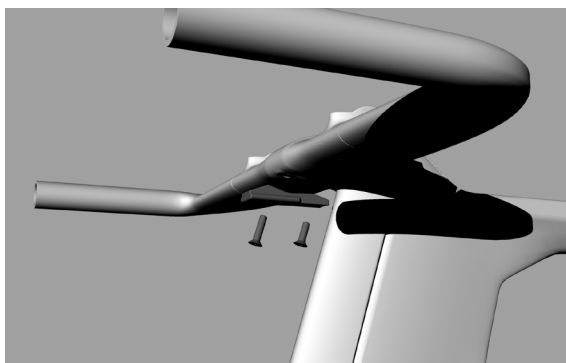
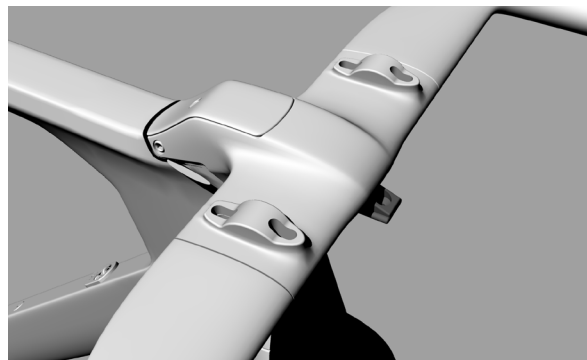
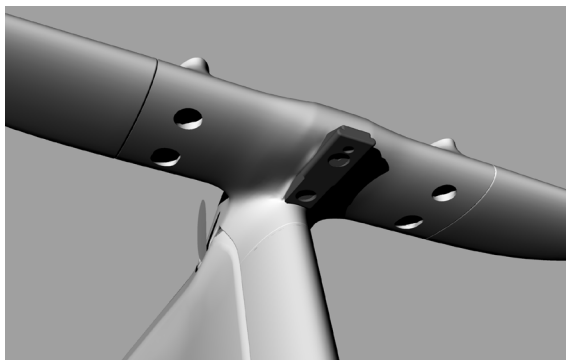


## ASSEMBLY GUIDE FOR TURBINE HYDRATATION SYSTEM

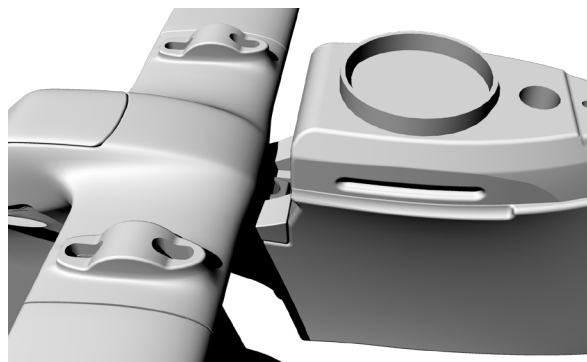
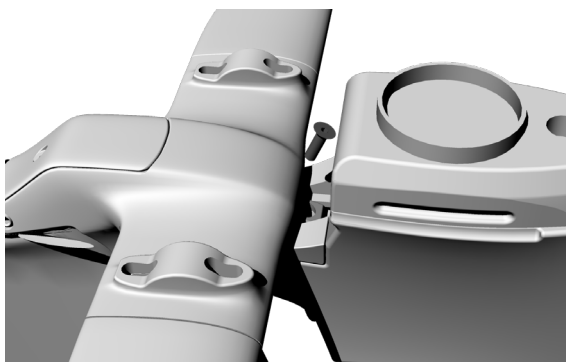
# 1 FIX THE TRAIL TO THE HANDLEBAR TIGHTENING THE TWO SCREWS IN THEIR HOLES



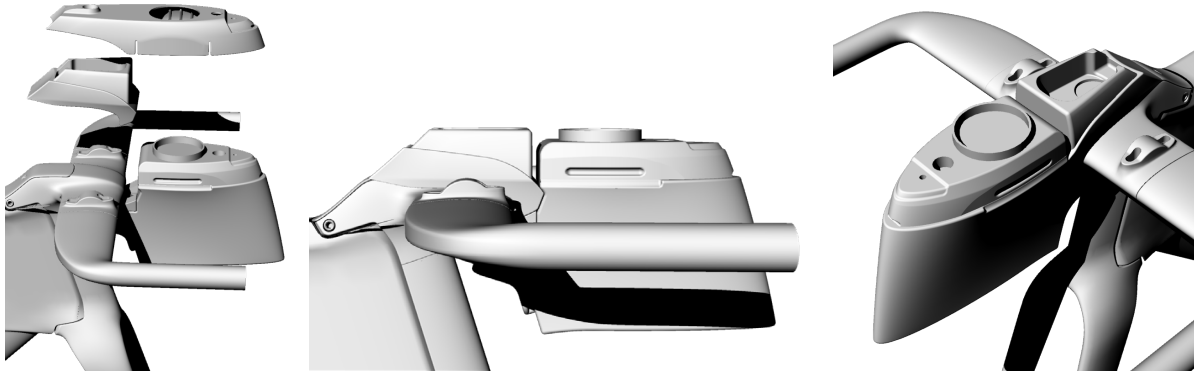
# 2 TAKE CARE THAT THE TRAIL IS FIXED AND THAT THERE IS A FINAL HOLE AVAILABLE ON THE FRONTAL PART



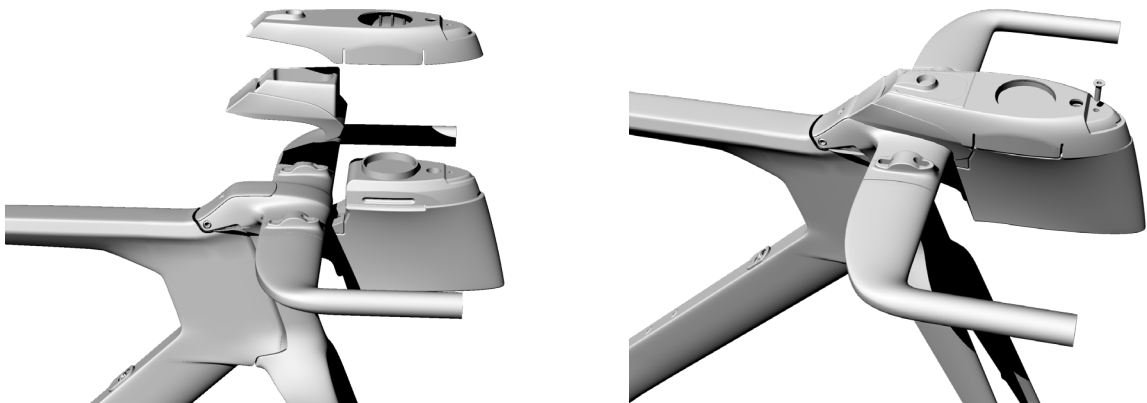
# 3 PUT THE BOTTLE CAGE TO THE TRAIL, TIGHTENING THE SCREW ON THE CENTRAL HOLE



#### 4 PUT THE SPONGE BETWEEN BOTTLE CAGE AND STEM



#### 5 PUT THE COVER ON THE BOTTLE CAGE AND FIX IT WITH THE PROPER SCREW



#### 6 THE HYDRATION SYSTEM IS ASSEMBLED ON TURBINE



