



WIRTA

TECHNICAL INTRODUCTION
REV.01

URTA

Urta Hybrid is Wilier's down-country eMTB with Fazua Ride60 motor that is taking part of the electric MTB market revolution. The pedal-assisted MTB category is evolving season after season, and the Urta Hybrid is the tangible example of the technological progress achieved thanks to lighter, high-performing materials combined with the most updated electric drive systems. Less than 16 kg for the top-end setup: a record for its category. Lightness means no need for high-power motors or large-capacity batteries. The Fazua Ride60 system is the optimal solution for fully preserving the nature and essence of an actual full-suspension carbon MTB: light and fast when climbing; swift, safe and fun on descents. Meanwhile, on the flat, Urta Hybrid's optimised weight provides a smooth ride with easy pedalling even without assistance, resulting in battery savings and, ultimately, increased range.

Urta Hybrid will be your ideal journey companion over trails, giving that extra boost that won't leave you longing for your old full-suspension bike.



2

WILIERPEDIA 2023

E-BIKES COLLECTION

URTA
ELECTRIFIED

MINIMALIST DESIGN, ELECTRIC HEART

Though it may look like a full-suspension down country MTB, the true beating heart of Urta Hybrid is hidden inside it. The new Fazua Ride60 pedalling assistance system is light, compact, silent and perfectly integrated within the frame. Thanks to an external auxiliary battery that can be fitted on the down tube (a solution that will still let you carry a bottle on the seat tube), the capacity of the system can be extended up to 640 Wh.



WORLD CHAMPION DNA

When developing Urta Hybrid, the starting point for Wilier's Innovation Lab engineers was the URTA SLR, the full-suspension cross-country bike used by Simone Avondetto, winner of the 2022 XCO U23 World Championship. Though closely mirroring the racing version, the suspension kinematics in Urta Hybrid have been improved and further developed to meet the needs of an e-downcountry bike. The rear shock link is integrated with the frame, providing extreme torsional stiffness and - not least - cleaner and sleeker aesthetics.



COMPACT, SAFE, POWERFUL

The 120mm travel (both front and rear) and the aggressive geometries make Urta Hybrid compact, safe and powerful. In detail, the geometries feature a longer reach for keeping them centred and tucked within the frame, a 75° seat tube for increased responsiveness in the push stage and a head tube angled at 66.5° for greater manoeuvrability. stiffness-to-weight ratio.



URTA

CABLE INTEGRATION

The cables are routed within the frame thanks to two openings on the front of the head tube.

MONOCOQUE HANDLEBAR

Like the Urta SLR version, Urta Hybrid is available with a 760mm-width Urta Bar monocoque carbon handlebar, in a choice of 3 stem lengths: 60, 75 or 90 mm. The frame/handlebar pairing in a single, highly integrated module adds superior performance thanks to its limited weight (150 grams lighter with Urta Bar) as well as increased comfort. The Urta Bar provides better vibration absorption compared to the traditional aluminium handlebar and stem.



DROPPER SEATPOST

The dropper seatpost KS Ragei is standard and it comes with all Urta Hybrid's set-up.



URTA

COLOR	LEAD GREY BLACK
FINISH	GLOSSY
COLOR CODE	U7

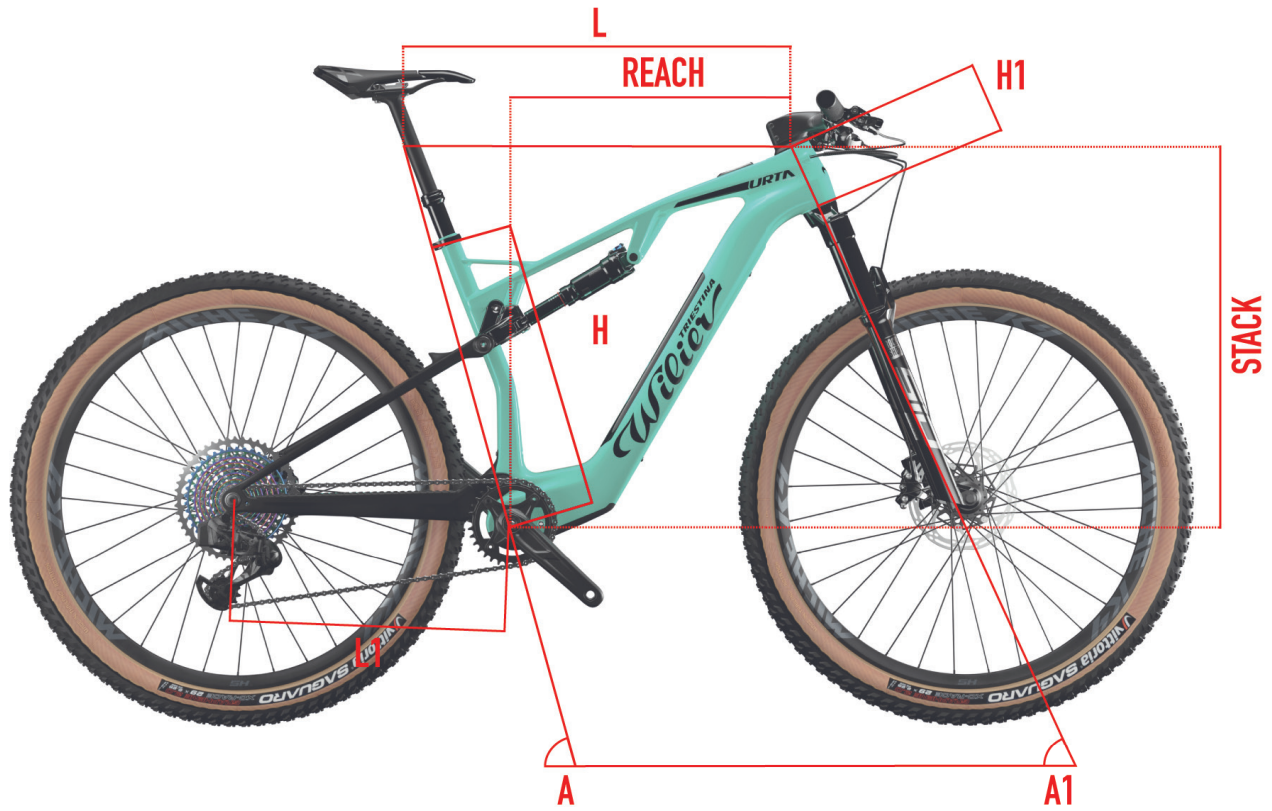


COLOR	AQUAMARINE
FINISH	GLOSSY
COLOR CODE	U8





GEOMETRIES AND SIZES

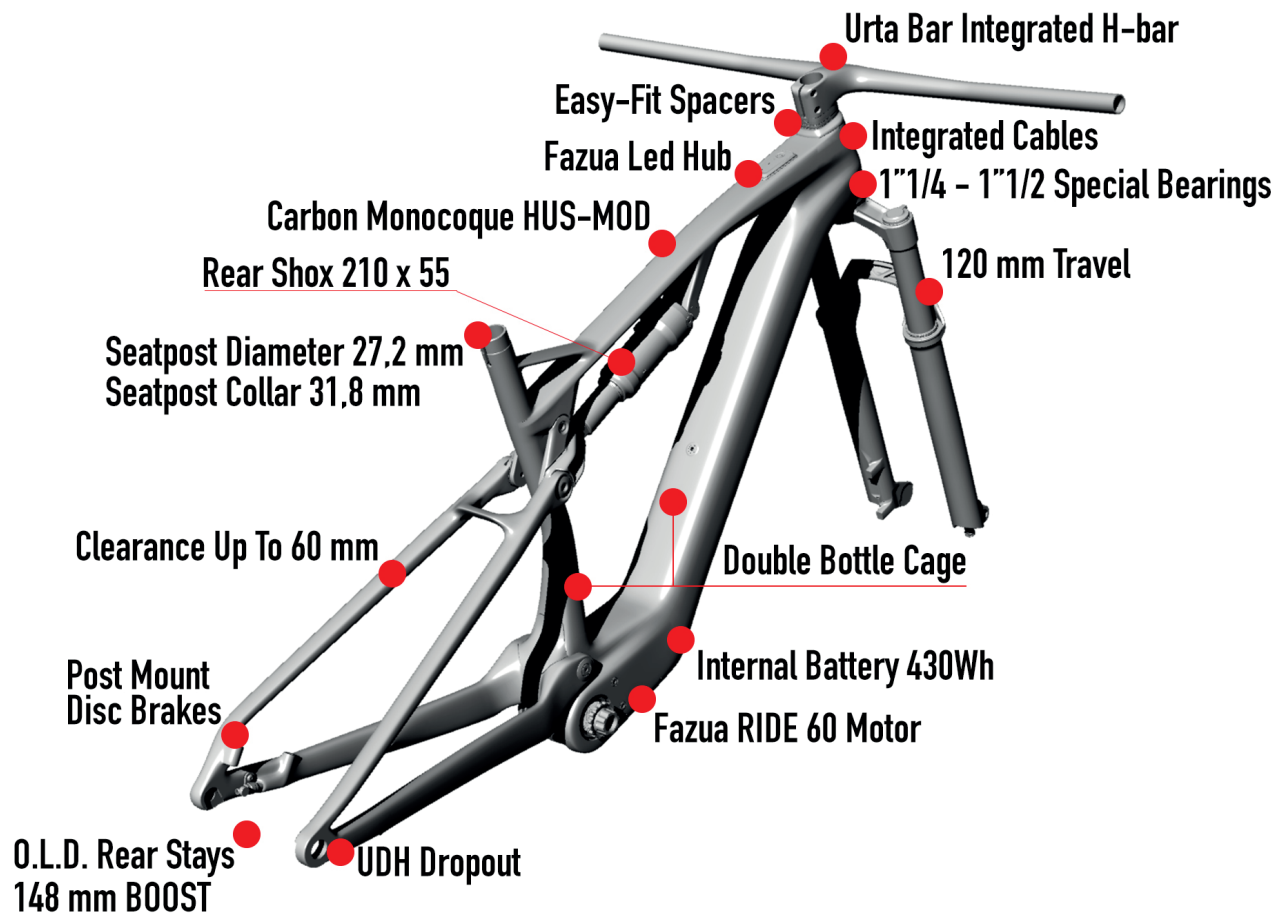


	REACH	STACK	H	L	A	H1	L1	A1	WHEELBASE
SIZE	[mm]	[mm]	[cm]	[cm]	[°]	[cm]	[cm]	[°]	[mm]
S	406	593	41	57.6	74	9.3	44.8	66	1148
M	432	597	44	60.3	74	9.4	44.8	66.7	1167
L	458	608	48	63.2	74	10.5	44.8	66.7	1198
XL	485	623	52	66.4	74	12.2	44.8	66.7	1231



URTA

KEYPOINTS



FRAME AND TECHNICAL SPECS DETAILS

HEADTUBE	1"1/4 - 1"1/2
UPPER BEARING	FSA MR137 + WTP110A-4
LOWER BEARING	FSA MR127 + HS H5068 (calotta) + HS H6088 (canotto)
FRONT FORK O.L.D.	110 mm UP TO USER'S FORK
REAR STAYS O.L.D.	148 MM - BOOST GEOMETRY
BB SHELL	FAZUA MOTOR
SEAT POST	27.2 - collar 31.8
FRONT DERAILLEUR TYPE	CHAIN CATCHER
BRAKES STANDARD	POST MOUNT



URTA

FAQ

Up to which speed can the pedal-assist system work?

The FAZUA RIDE60 pedal assist system installed on URTA HYBRID delivers power up to 25 km/h. Beyond this speed, the motor stops delivering power but the bike can still be ridden as a normal MTB. The lightweight of the bike and the handling makes URTA HYBRID easy to ride above 25 km/h speed even without the assistance of the motor.

Do you have to pedal to get power from the motor?

Yes, URTA HYBRID is a pedal-assisted e-MTB: this means that the motor will not deliver power if you do not pedal, despite being on.

Does the system require regular maintenance?

Maintenance is quite limited and simple. The FAZUA RIDE60 system requires no particular maintenance: wash your bike like a normal bike, lubricate the chain and check wear on the brake pads. However, Wilier Triestina recommends you to regularly check your URTA HYBRID at an official reseller to avoid mechanical issues.

How can I extend battery capacity?

You can purchase additional batteries from your local retailer. The battery size and weight are similar to that of a water bottle. The capacity of the additional battery is 216 Wh.

How should I store my URTA HYBRID?

If the battery won't be used for a long period, we recommend you to store the bike at room temperature, ideally between 18 and 20°C. Avoid leaving the battery installed on URTA HYBRID during cold nights or exposed to direct sunlight.

I have a question or a problem with the pedal assist system. What can I do?

Contact your local FAZUA or Wilier Triestina dealer.

How can I wash URTA HYBRID?

We recommend wiping it with a soft cloth and mild soap, then drying it completely before use. Do not use compressed air/water during washing. Avoid water to come in contact with the electrical parts of the bike.

Can I use URTA HYBRID when it rains or in the mud?

Both the motor and the battery are water resistant, so you can use it in muddy or in wet conditions. Use in environmentally hazardous conditions is not recommended.

What type of wheels can be installed on the URTA

29" wheels with 110x15 front boost axle and 148x12 rear boost axle. Tires with a maximum width of 60 mm can be installed

Can I take my URTA HYBRID on a plane?

You will need special documentation issued by the airline to take your URTA HYBRID on a plane. Contact your airline before booking your ticket.

Does URTA BAR integrate the cables ?

No. The handlebar is monocoque but the wiring is completely external.

What is the travel fork?

URTA HYBRID is designed for forks with 120mm travel. Moreover the smart linkage on the rear stays is optimized for the rear suspension with 120mm travel.

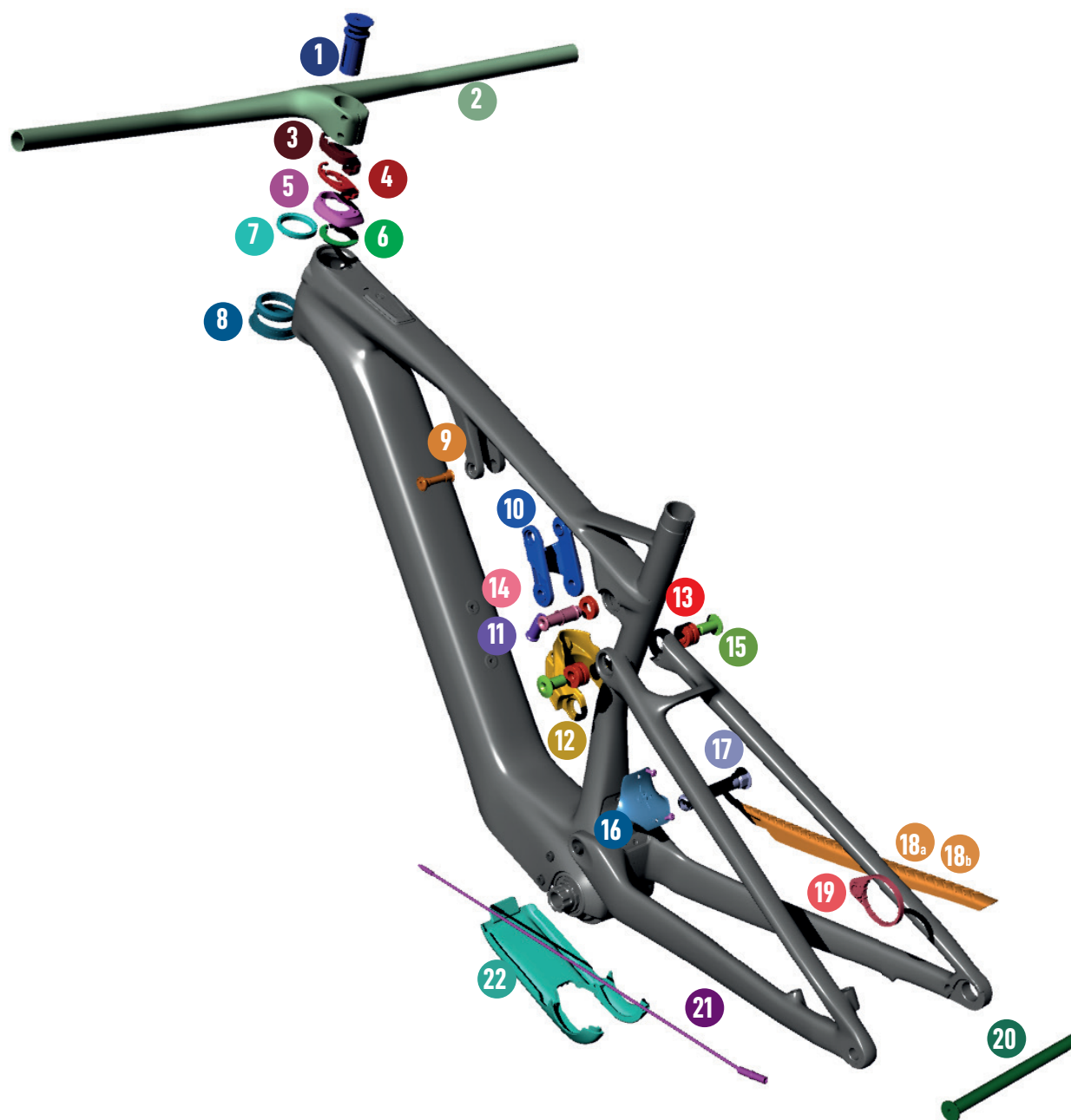


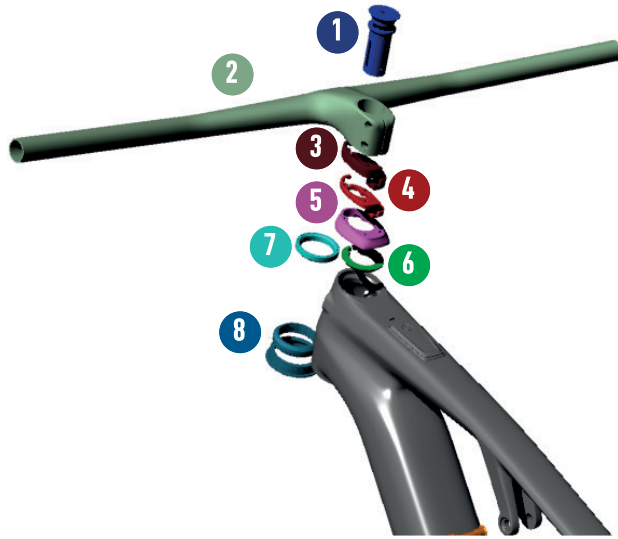
8

WILIERPEDIA 2023

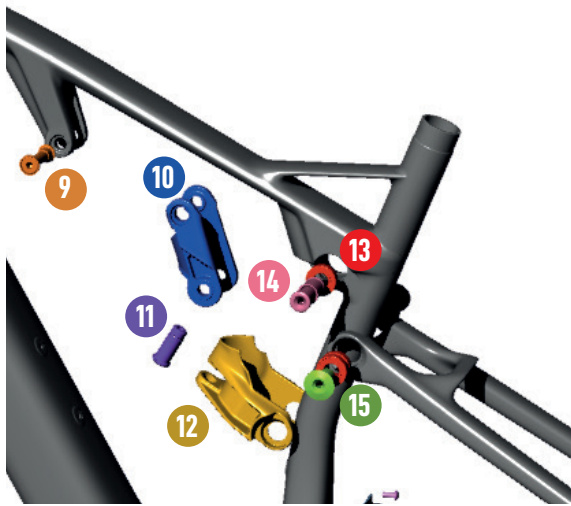
E-BIKES COLLECTION

SPARE PARTS





SPARE PARTS	
1	EXROUFK ROUND FORK EXPANDER
2	E1HBU WILIER H.BAR URTA BAR
3	WTP-ZSPACER10 SPACER 10MM
4	WTP-ZSPACER5 SPACER 5MM
5	W0TC TOP COVER
6	WTP-UCOMPRING COMPRESSION RING
7	MR137 FSA BEARING 1-1/4"
8	33035336044 RITCHEY HEADSET LOWER PART



SPARE PARTS	
9	WTP-SHUP URTA SHOCK UPPER SCREW
10	WTP-UHYSWA URTA HY SWING ARM
11	WTP-SHOCKSC FIXING SCREW REAR SHOX LOWER POSITION
12	WTP-UHYSHCKA URTA HY SHOCK ARM
13	BEARING 61901
14	WTP-UHYSXSC URTA HY FIXING SCREW SHOCK ARM
15	WTP-UHYSR LINKING SCREW REAR STAYS (UP)



SPARE PARTS	
16	MUDHYRS MTB-HY REAR STAYS COVER
17	WTP-UHYLBEAKIT URTA HY SET LINK LOWER PART
18 _a	WTP-CHPROT-MTB CHAIN STAY PROTECTOR MTB
18 _b	WTP-AFPROT-MTB CHAIN STAY PROTECTOR+STICKER MTB
19	61A104000A CENTER LOCK MAGNET
20	HGPRTA12X178.5L REAR AXLE LEVER 12X178.5 P1.0 URTA
21	61A101000A SPEED SENSOR S
22	WTP-UHYCARTER BB PROTECTING CARTER



