

Wilier TRIESTINA

SLR ADM/IOSS/VERA SUPERSO

TECHNICAL INTRODUCTION
REV.01

SUPERSONICA SLR

Redefining the boundaries of speed. Is it possible?

A synergistic challenge, months of incredibly intense work, a joint project orchestrated by our Innovation Lab together with Stefan Küng and all the staff of the Groupama - FDJ Performance Center.

The aim of the project? Simple: to improve the aerodynamic performance of our time trial bikes by at least 10%.

The result? Supersonica SLR: the new time trial and triathlon frame that improves aerodynamic efficiency by almost 16%* compared to our previous time trial frame.

* Data collected in wind tunnel from comparative tests (Supersonica SLR vs Turbine SLR) with wind at 50km/h and a turbulence factor of 0.3%.



SUPERSONICA^{SLR}



R&D

Two prototypes built, dozens of kilograms of 3D printing, over 50 hours of computer simulations, 30 hours spent between the wind tunnel at Silverstone (UK), the velodrome in Switzerland and road tests in Belgium. These figures emphasise how much dedication lies behind such a high performing and demanding product.



A TECHNOLOGICAL REVOLUTION

Supersonica SLR however is much more than just the best time trial bike we've ever built. Supersonica SLR constitutes a veritable technological revolution that today represents the pinnacle of our innovative ability and demonstrates how valuable it is to work with some of the world's most experienced and powerful athletes.



CUSTOM AERO EXTENSIONS

Supersonica SLR is our best time trial bike ever: the pinnacle of innovation for Wilier. That's why we want to offer you - along with the Supersonica SLR - an additional, exclusive and tailor-made service to optimise your riding position and help you achieve the best possible aerodynamic performance. You'll be able to customise your Supersonica SLR aerodynamic extensions with optical forearm scanning and subsequent production, with a choice of 3D printed titanium or premium quality carbon laminate. This is the same methodology we use to customise the bikes of professional athletes in the World Tour teams we sponsor. Scanning and production will take place in specialist Wilier Triestina centres equipped with state-of-the-art instrumentation.



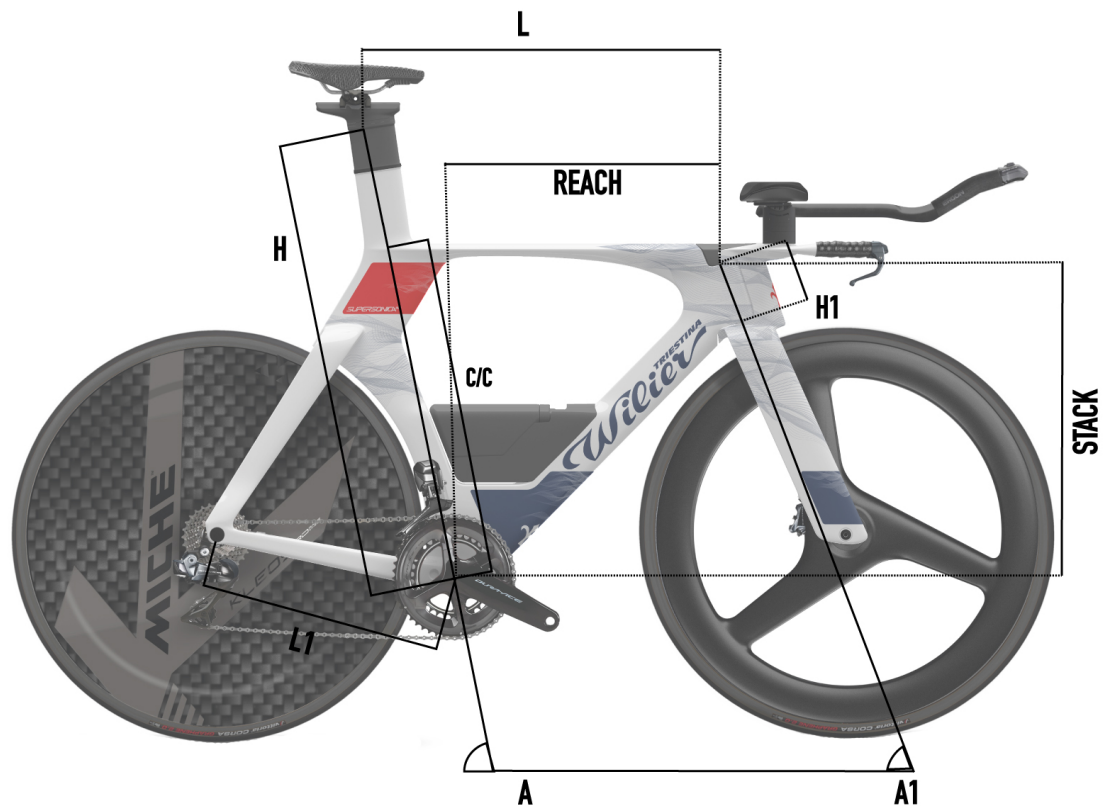
SUPERSONICA^{SLR}

COLOR	GROUPAMA - FDJ
FINISH	GLOSSY
COLOR CODE	T15



SUPERSONICA^{SLR}

GEOMETRIES AND SIZES

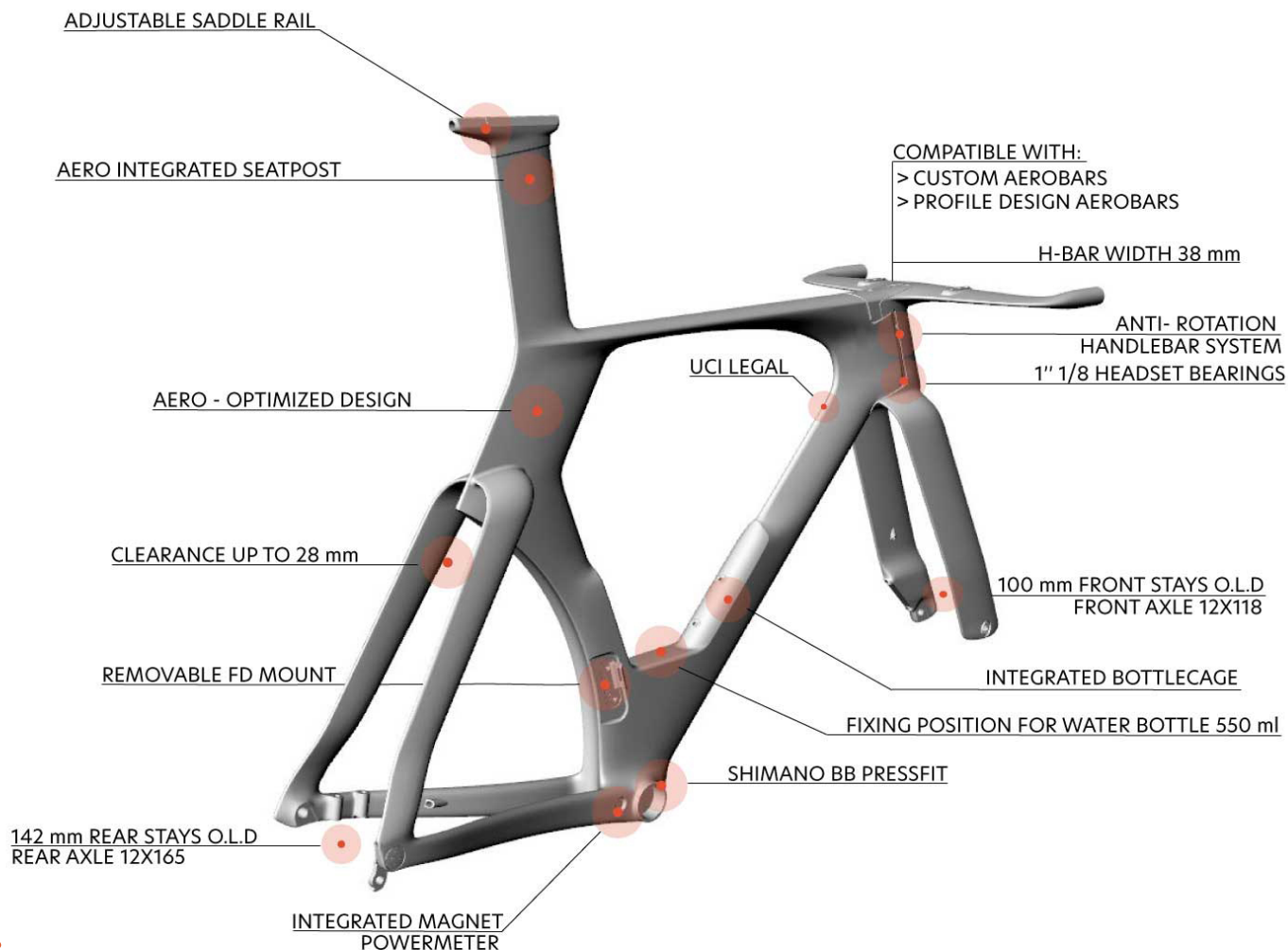


	REACH	STACK	H	C/C	L	A	H1	L1	A1	WHEELBASE
SIZE	[mm]	[mm]	[cm]	[cm]	[cm]	[°]	[cm]	[cm]	[°]	[mm]
XS/S	395	480	66.7	48.5	46.2	82	5.8	40.5	72	973
M	417	500	71.1	50.5	48.7	82	7.9	40.5	72	1001
L / XL	439	520	75.6	52.5	51.2	82	7.9	40.5	72	1030



SUPERSONICA^{SLR}

KEYPOINTS



FRAME AND TECHNICAL SPECS DETAILS	
HEADTUBE	1" 1/8
UPPER BEARING	MR155
LOWER BEARING	MR155
FRONT FORK O.L.D.	100mm QRPERFOR19000
REAR STAYS O.L.D.	142mm QRPERROR66000
BB SHELL	SHIMANO PRESS FIT
SEAT POST	INTEGRATED-HEIGHT ADJUSTABLE
FRONT DERAILLEUR	REMOVABLE FD

FAQ

Is there an anti-rotation mechanism for the handlebar?

Yes, the Supersonica SLR model features an anti-rotation mechanism for the handlebar. A special metal part has been inserted along the pin that secures the fork to the frame, preventing the handlebar from rotating completely. This system prevents the ends of the handlebar from impacting the frame of the bike, ensuring greater safety and protection during use.

Which water bottle is the Supersonica SLR model compatible with?

The Supersonica SLR model is only compatible with a Wilier Triestina water bottle. This compatibility ensures perfect integration and optimal operation of the bike's hydration system.

What is the capacity of the water bottle included with the Supersonica SLR model?

The water bottle for the Supersonica SLR model has a capacity of 550 ml, ensuring adequate hydration.

Is the water bottle included with the Supersonica SLR model UCI compliant?

Yes, the water bottle included with the Supersonica SLR model is UCI compliant, ensuring full compliance during competitions and use in regulated environments.

What is the compatibility of the tyres on the Supersonica SLR model?

The Supersonica SLR model is compatible with tyres up to 28 mm.

What are the compatibility options for the handlebar extensions on the Supersonica SLR model?

The Supersonica SLR model offers two handlebar extension options:

1. Custom Wilier Triestina extensions, available in carbon or titanium;
2. Extensions with standard Profile Design 3A Riser Kit.

Both options ensure optimal bike integration and customisation.

What are the dimensions of the axles on the Supersonica SLR model?

The axles on the Supersonica SLR model are made by MICHE. Their dimensions are as follows: front axle: 12x118 mm, rear axle: 12x165 mm

What type of bottom bracket is fitted on the Supersonica SLR model?

The Supersonica SLR model uses a Press-Fit type bottom bracket. This system offers greater rigidity and better power transfer when pedalling.



SUPERSONICA^{SLR}

What type of seatpost is fitted on the Supersonica SLR model?

The Supersonica SLR model features an integrated seatpost. This seatpost must be cut to fit the athlete's height. After cutting, spacers can still be added to adjust the fitting to ensure an optimum position in the saddle.

What type of seatpost adjustment system is fitted on the Supersonica SLR model?

The seatpost on the Supersonica SLR is compatible with the Ritchey 1-bolt system fitted on 10 cm long rail. This allows the saddle to be set back, allowing both UCI legal positioning and triathlon advanced seat positioning. With this versatility, the desired position can be achieved for a variety of riding needs.

How is the bottle holder attached to the frame of the Supersonica SLR?

The Supersonica SLR bottle holder is attached to the down tube of the frame with two screws. This system provides optimum stability and safety while cycling, keeping the water bottle firmly in place even on rough terrain.

How is the water bottle attached to the bottle holder on the Supersonica SLR model?

The water bottle on the Supersonica SLR model is attached to the bottle holder with clips on both the front and back. This system ensures a secure hold while cycling, keeping the water bottle firmly in place.

How can the front derailleur position be adjusted?

There are two derailleur couplings that can be attached to the frame of the Supersonica SLR depending on the gear size. This allows the transmission to be customised to suit your specific needs. In the case of a single crank set, a cover can be installed to ensure the utmost clean-cut aesthetics.

Which transmission systems is the Supersonica SLR compatible with?

The Supersonica SLR is compatible with the most advanced electronic transmission systems on the market for time trial bikes. There are no particular assembly restrictions.

What are the characteristics of the Supersonica SLR handlebar?

The handlebar on the Supersonica SLR model is 38 cm wide and has a low ride so as to reduce the overall frontal footprint of the bike.

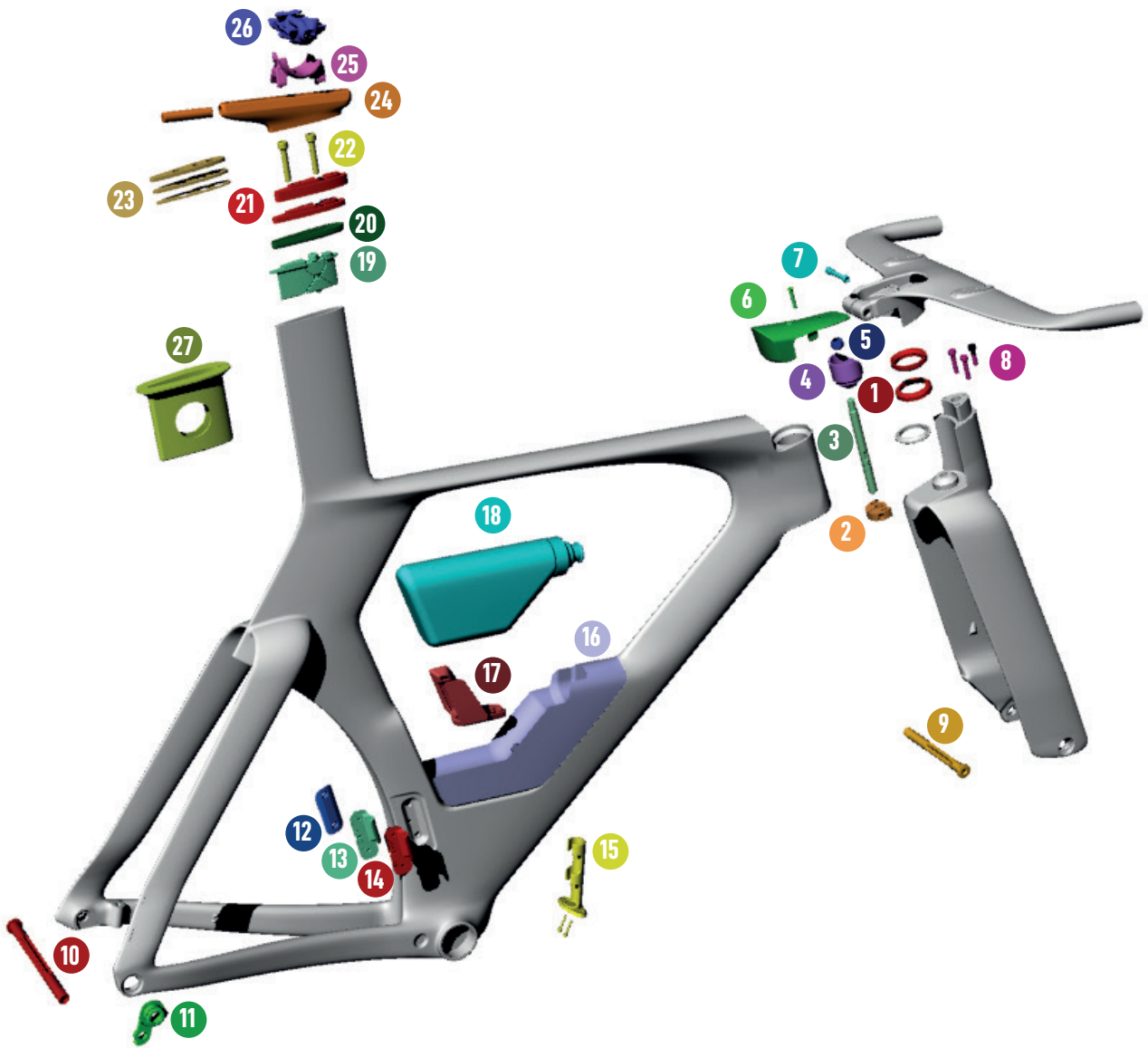
What type of headset does the Supersonica SLR model have and what are its specific characteristics?

The headset on the Supersonica SLR model is a 1" 1/8 type and is not height adjustable. This configuration offers stability and reliability while cycling, ensuring optimum performance in various conditions.

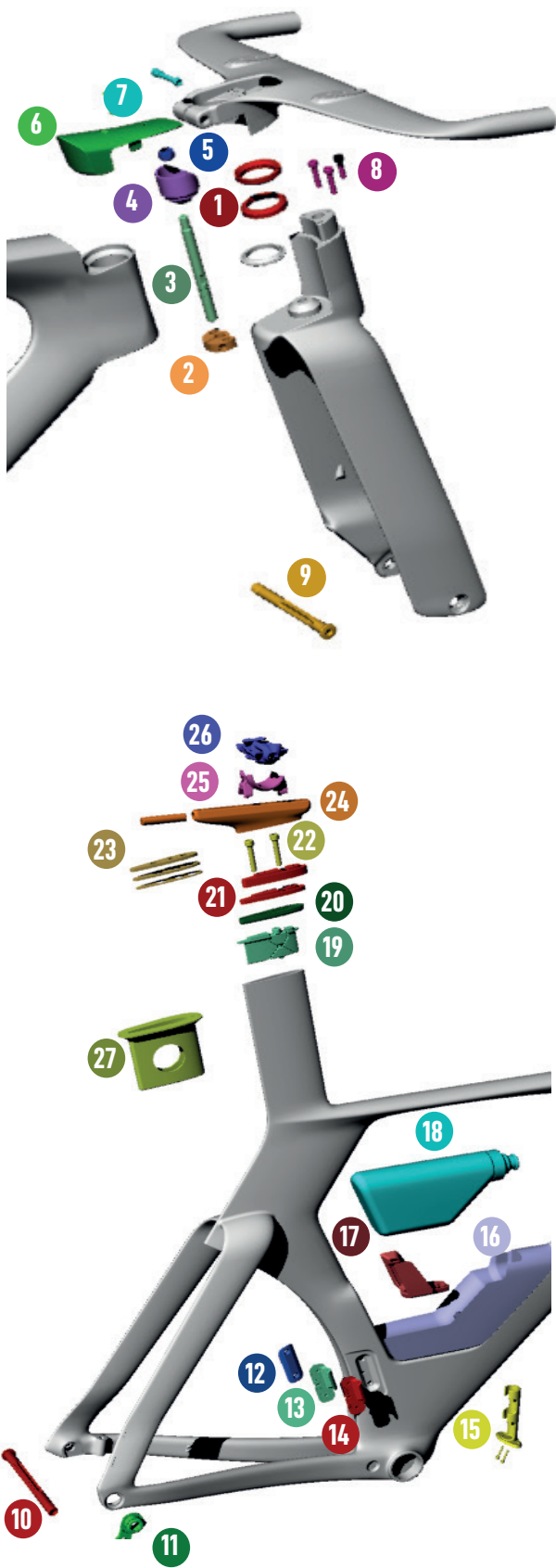


SUPERSONICA^{SLR}

SPARE PARTS



SUPERSONICA^{SLR}



SPARE PARTS

MR155	FSA BEARINGS 1-1/8"
WTP-ANTIROT	ANTI-ROTATION SYSTEM NUT LOWER PART
WTP-55PINS WTP-55PINM WTP-55PINL	FORK PIN S SIZE FORK PIN M SIZE FORK PIN L SIZE
WTP-UPANT	ANTI-ROTATION SYSTEM UPPER PART
WTP-55NUT	NUT FOR ANTI-ROTATION FORK PIN
WTP-55HBCOV	HANDLEBAR COVER
WTP-55HBSCRW	HANDLEBAR FIXING SCREW
BRUN-M5X35-TC-HEX	SCREW M5 X 35MM-TC-HEX
QRPERF0B19000	FRONT AXLE LIGHT RD 12X119.5
QRPERROB66000	REAR AXLE LIGHT RD 12X166.5
WVDROP	DROPOUT
WTP-55FDCOV	INTERCHANGEABLE COVER FOR NO DERAILLEUR
WTP-55FD1H	FD MOUNT COVER UPPER POSITION
WTP-55FD2L	FD MOUNT COVER LOWER POSITION
WTP-55HDI2	INTERNAL BATTERY HOLDER
WTP-55BHS WTP-55BHM WTP-55BHL	WATER BOTTLE HOLDER S SIZE WATER BOTTLE HOLDER M SIZE WATER BOTTLE HOLDER L SIZE
WTP-55CLIP	BOTTLE CLIPS HOLDER
0240201	ELITE SUPERSONICA CRONO BOTTLE
WTP-55EXPSP	SEATPOST EXPANDER
WTP-55PCAP	SEATPOST CAP
WTP-55SPSP5 WTP-55SPSP10	SEATPOST SPACER 5MM SEATPOST SPACER 10MM
BRUN-M5X30-TC-HEX	SCREW M5 X 30MM-TC-HEX
WTP-55SPACER1 WTP-55SPACER2 WTP-55SPACER3	SEATPOST SPACER 1MM SEATPOST SPACER 2MM SEATPOST SPACER 3MM
WTP-55RAIL	SEATPOST RAIL
PRD13631-2	RITCHEY SEAT MAST-TT
55055466007 55055467011	CLAMP 7X7 WCS ALU HPB 1BOLT CLAMP 7X9.6 CARB. SEAT
WTP-55CUTJIG	CUTTING JIG FOR SUPERSONICA



