

Wilier TRIESTINA

TURBINE^{SLR}

TECHNICAL INTRODUCTION
REV.01

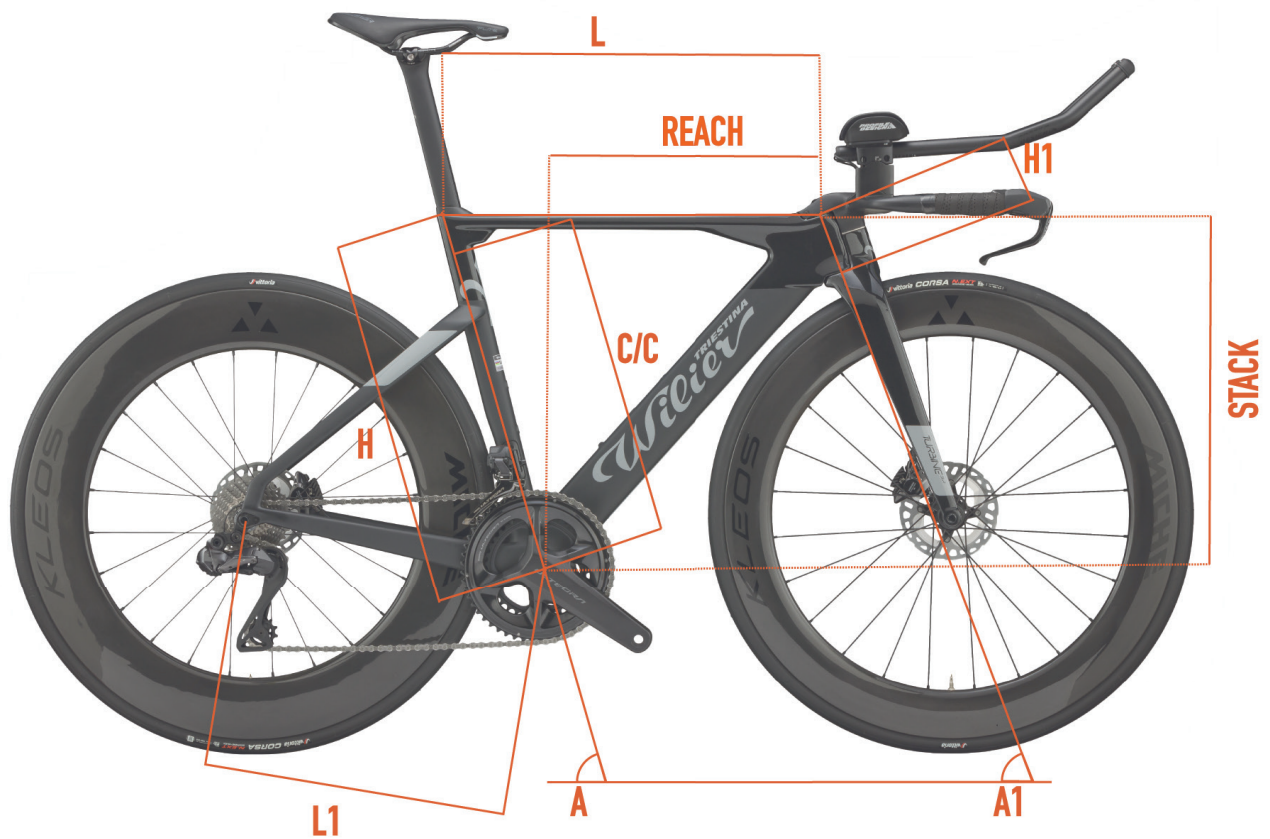
TURBINE SLR

COLOR	BLACK, GREY
FINISH	MATT & GLOSSY
COLOR CODE	T13



TURBINE^{SLR}

GEOMETRIES AND SIZES

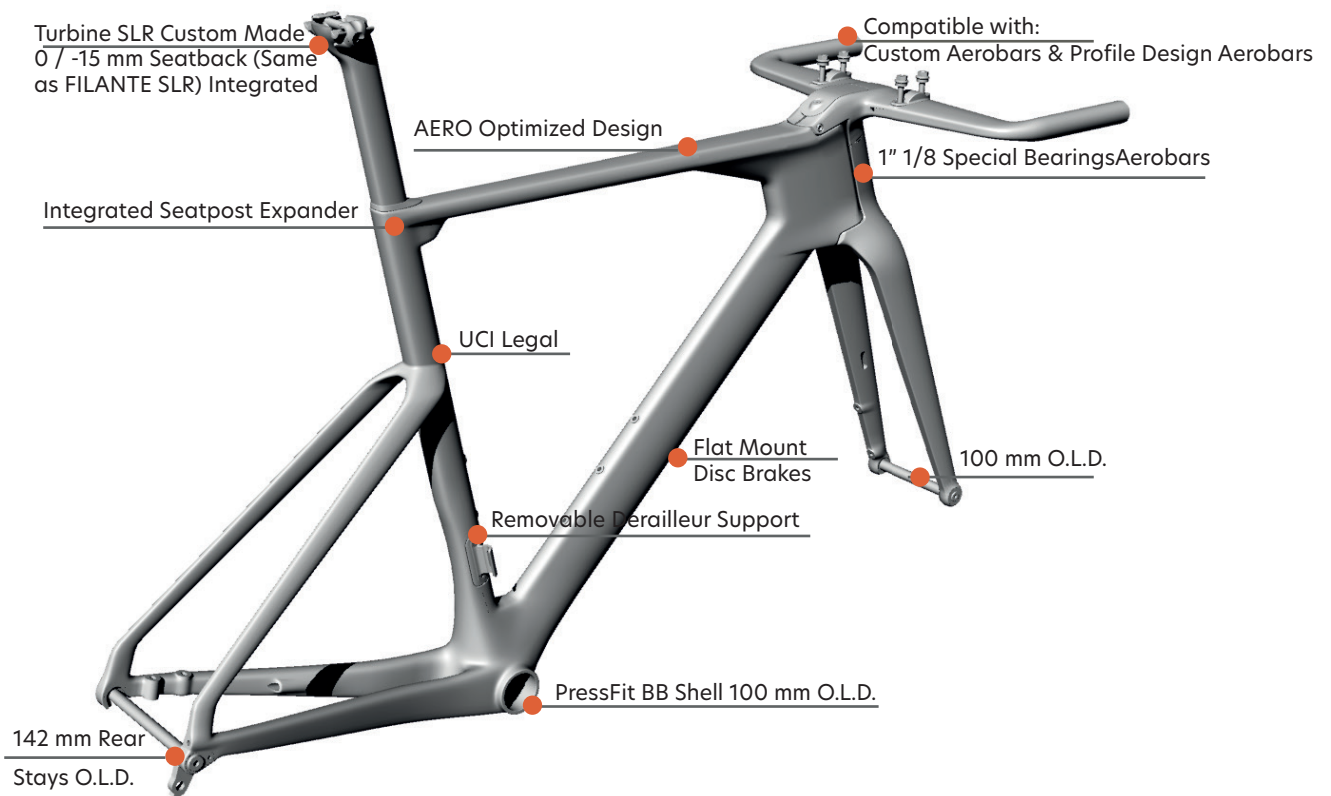


	REACH	STACK	H	C/C	L	A	H1	L1	A1
SIZE	[mm]	[mm]	[cm]	[cm]	[cm]	[°]	[cm]	[cm]	[°]
XS/S	397	487	50.3	50.1	51.4	76.5	8.2	40.5	72.5
M	418	521	53.8	53.6	54.3	76.5	11.8	40.5	72.5
L / XL	439	555	57.3	57.1	57.2	76.5	15.3	40.5	72.5



TURBINE SLR

KEYPOINTS



FRAME AND TECHNICAL SPECS DETAILS	
HEADTUBE	1"1/8 - 1"1/8
UPPER BEARING	MR155
LOWER BEARING	MR155
FRONT FORK O.L.D.	100 mm (QRPERFOR19000)
REAR STAYS O.L.D.	142 mm (QRPERROR66000)
BB SHELL	PRESS FIT (86.5 wide x 41 diameter)
SEAT POST	WILIER SEATPOST 0/-15
FRONT DERAILLEUR TYPE	REMOVABLE FD SUPPORT
SEATPOST EXPANDER	WTP-SPEXP



FAQ

Is there an anti-rotation mechanism for the handlebars?

Yes, a special metal part is inserted along the fork-to-frame fixing axle, which prevents the handlebar from rotating completely. This also prevents the ends of the handlebars from hitting the bike frame.

What is the weight difference compared to the previous Turbine model?

The Turbine SLR frame was specially designed to be lighter than the previous version, without compromising the excellent aerodynamic result. The overall weight of the frame is now 300g lighter.

What is the main characteristic of the Turbine SLR bar?

Turbine SLR features a handlebar designed with the fundamental requirements of the bike in mind: lightness and aerodynamics. The handlebar is stiff so as to allow a homogenous lay up of carbon, without having to create superstructures that would have made the component heavier. The low set-up of the handlebar reduces the frontal footprint and improves the aerodynamic position of the rider.

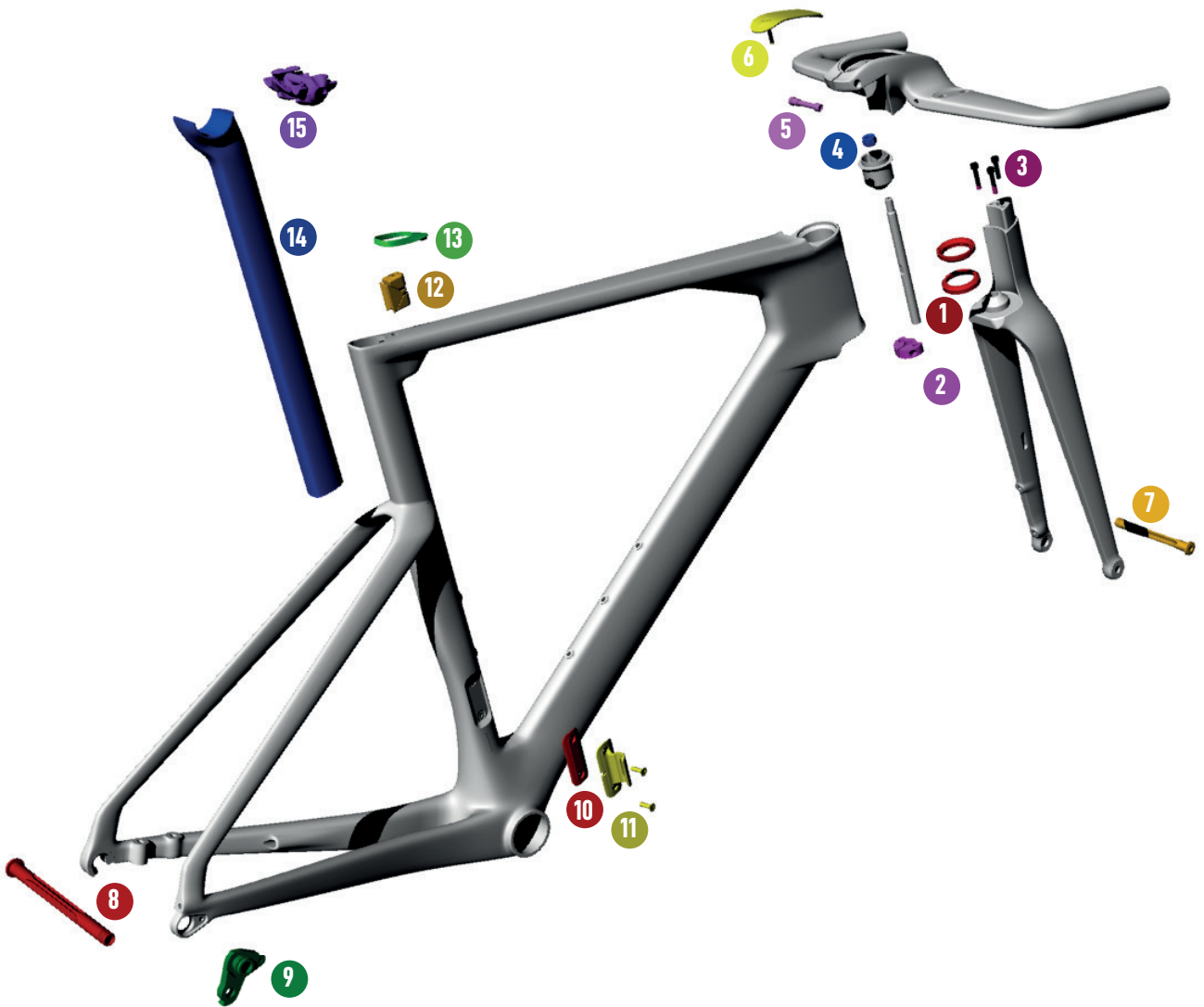
Which groupsets are compatible with the Turbine SLR?

The Turbine SLR is compatible with the latest generation electronic groupsets. In particular, it comes standard with Dura-Ace 12s and Ultegra 12s groupsets.

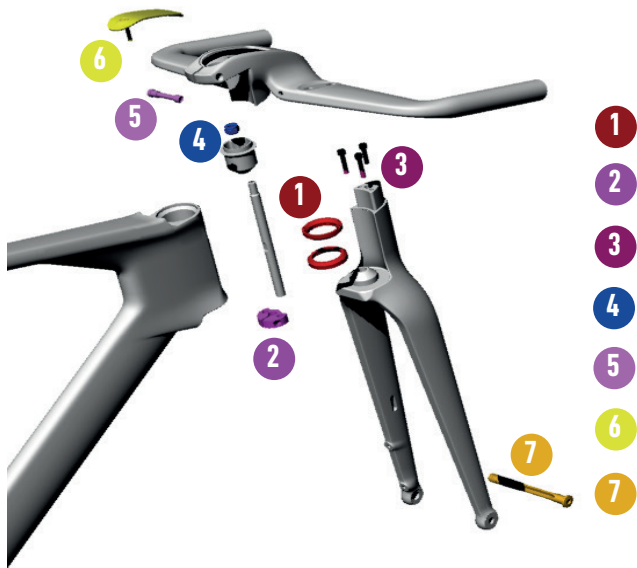


TURBINE^{SLR}

SPARE PARTS



TURBINE^{SLR}



SPARE PARTS	
1	MR155 FSA BEARINGS 1-1/8"
2	WTP-ANTIROT ANTI-ROTATION SYSTEM NUT LOWER PART
3	BRUN-M5X35-TC-HEX SCREW M5 X 35MM-TC-HEX
4	WTP-55NUT NUT FOR ANTI-ROTATION FORK PIN
5	WTP-55HBSCRW HANDLEBAR FIXING SCREW
6	WTP-TT-COVSTEM STEM COVER
7	QRPERFOB19000 MICHE PERNO LIGHT RD 12X119.5 ANT



SPARE PARTS	
8	QRPERROB66000 MICHE PERNO LIGHT RD 12X166.5 POST
9	WORDROP DROPOUT
10	FDCOV1X INTERCHANGEABLE FD COVER
11	WTP-REMGD FRONT DERAILLEUR SUPPORT
12	WTP-SPEXP SEATPOST EXPANDER EXPANDER
13	WTP-SPSHIELD-F SEATPOST RUBBER SEAL
14	AFT-STFILA0 AFT-STFILA-15 SEATPOST FILANTE ZERO OFFSET SEATPOST FILANTE -15 OFFSET
15	55055466007 55055467011 RITCHEY CLAMP 7X7 WCS ALU HPB RITCHEY CLAMP 7X9.6 CARB. SEAT.



