

Wilier TRIESTINA

TECHNICAL INTRODUCTION

TECHNICAL INTRODUCTION
REV.03

FILANTE_{SL}

2

WILIERPEDIA 2025

ROAD COLLECTION

In an evolving species, only the most calibrated change will result in progress. What really counts is neither strength nor intelligence. What makes the difference is the ability to adapt to change.

The Filante SL inherits its forms, its lines and its racing spirit from the Filante SLR, Wilier's high-end aero racing bike used by professionals in the most important World Tour competitions. What makes the change beneficial is the application of few and simple technical solutions. The different carbon fibre lamination used for the frame gives it a less extreme and more comfortable structure compared to the SLR version. All of this with a weight gain of just under 150 g for the same size frame. Behind every decision that led to the creation of this model there is no step back but rather the desire to look ahead, using proprietary technologies wisely and with determination to embrace an even wider audience.

FILANTE_{SL}



WORLD TOUR AERODYNAMICS AND DESIGN

The carbon fibre is used in a frame that mirrors the shape of the Filante SLR used by the professional cyclists. What changes is the frame module, using different fabrics made of composite material to create a new lamination. Though the substance may change, the aerodynamic performance does not.

SMART INTEGRATION

No visible cables. The monocoque handlebar allows the allure of the Filante product range to remain unchanged. A technical choice that makes possible to contain the price without compromising the performance and the possibility to easily personalise the setup.



SIX FRAME SIZES, GLOSSY FINISH

The Filante SL echoes the racing geometries of its big sister, the SLR. Six available frame sizes: XS, S, M, L, XL, XXL. Five available colours with glossy finish.



SL PHILOSOPHY

In addition to expanding the product range, the goal of each SL series bike is to provide the best quality/price/performance ratio. The use of technologies and setups that are less extreme aims to preserve the overall quality of each product. Did we succeed? You be the judge.



FILIANTE_{3L}

COLOR	BLACK
FINISH	GLOSSY
COLOR CODE	F11



COLOR	SILVER, BLACK
FINISH	GLOSSY
COLOR CODE	F12



FILANTE_{SL}

COLOR	RED , BLACK
FINISH	GLOSSY
COLOR CODE	F15



COLOR	BLUE, WHITE
FINISH	GLOSSY
COLOR CODE	F19

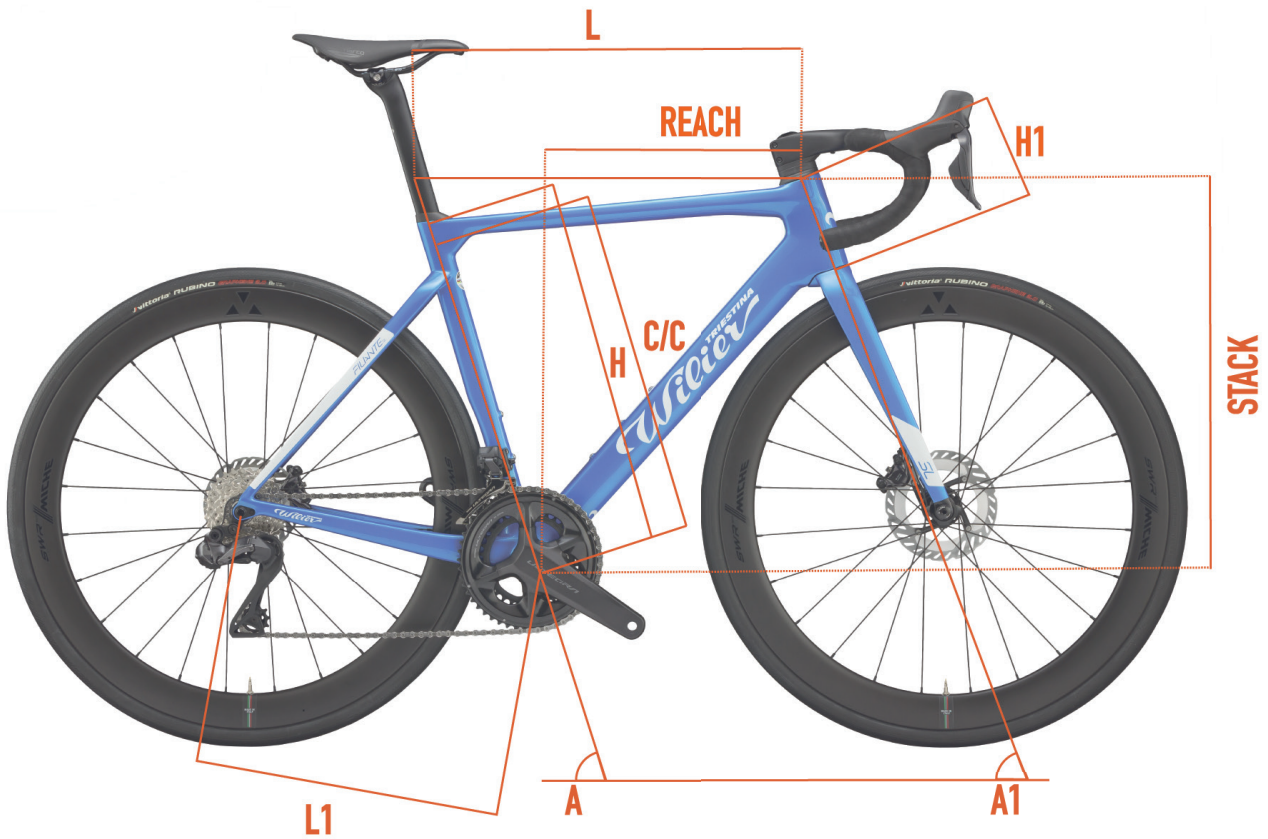


FILANTE_{SL}

COLOR	WHITE, RED
FINISH	GLOSSY
COLOR CODE	F20



GEOMETRIES AND SIZES

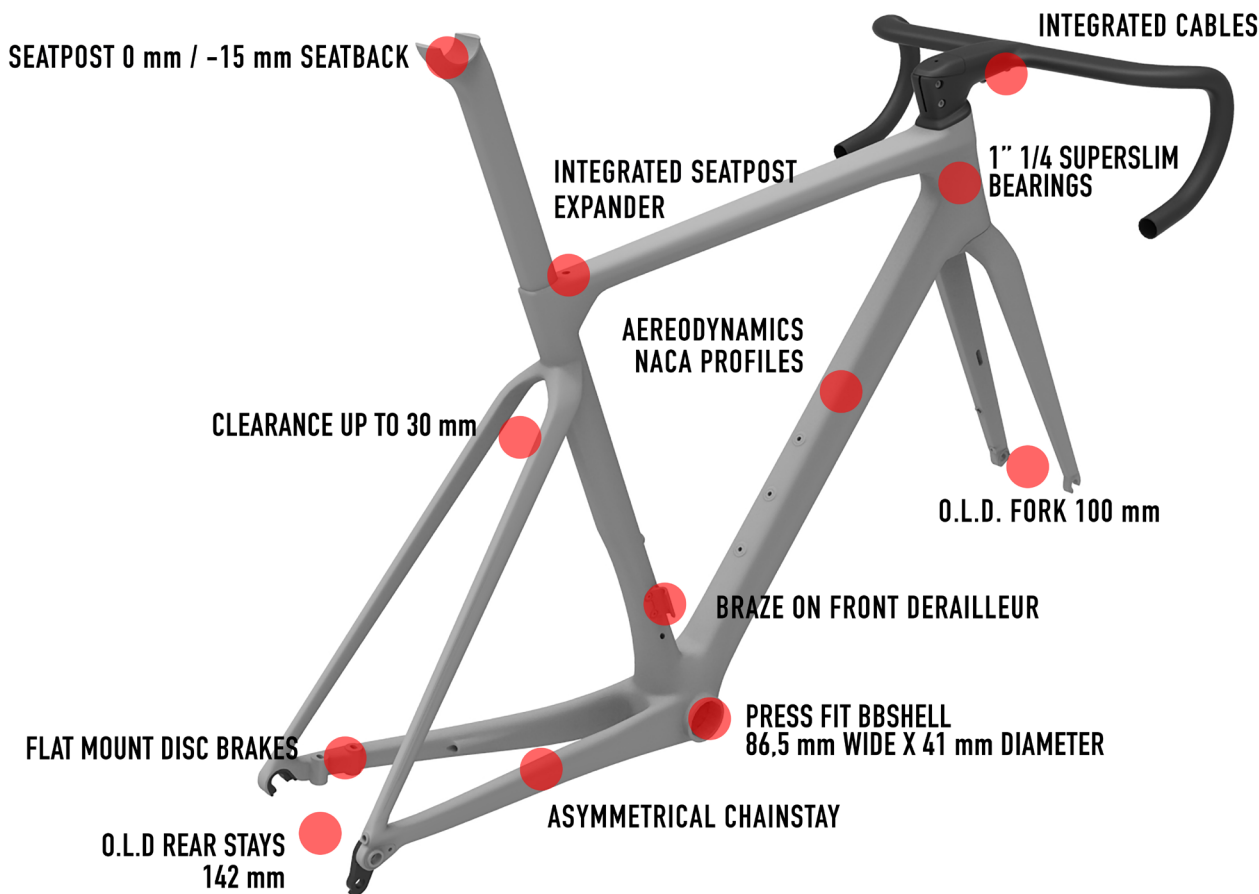


	C/C	L	H	A	H1	L1	A1	REACH	STACK	WHEELBASE
SIZE	[cm]	[cm]	[cm]	[°]	[cm]	[cm]	[°]	[mm]	[mm]	[mm]
XS	43.2	51.5	45	75.2	10.4	40.7	70.8	380	505	981
S	46.2	53	48	74.5	11.9	40.7	72	384	521	984
M	48.2	54.3	50	74	13.5	40.8	72.5	388	538	990
L	50.2	55.6	52	73.5	15.4	41	73	391	555	997
XL	52.2	57	54	73	16.6	41.1	73	395	571	1002
XXL	54.2	58.3	56	72.5	18.1	41.1	73.5	399	587	1006



FILANTE_{SL}

KEYPOINTS



FRAME AND TECHNICAL SPECS DETAILS - DISC VERSION

HEADTUBE	1"1/4 - 1"1/4
UPPER BEARING	WTP-BEARING-SSLIM 39X46.9X7 +WTP-2SCOMPRING
LOWER BEARING	FSA MR137
FRONT FORK O.L.D.	100mm - MICHE PERNO 12X118 FRONT
REAR STAYS O.L.D.	142mm - MICHE PERNO 12X165 REAR
BB SHELL	SHIMANO PRESS FIT (86.5 WIDE x 41 diameter)
SEAT POST	WILIER SEATPOST 0/-15
FRONT DERAILLEUR TYPE	BRAZED ON
SEATPOST EXPANDER	WTP-SPEXP



FAQ

How much does the frame weigh?

The frame weighs 1010 grams for a painted size M.

What type of stem/handlebar can I install on Filante SL?

The standard bicycle is fitted with Z Bar. With Wilier Triestina carbon spacers, Filante Bar and V Bar can also be installed.

Do the integrated cables pass through the handlebar?

The cables are fully integrated into the handlebar and frame, passing through the top superthin bearing. This design ensures clean aesthetics and high aerodynamic efficiency, enhancing both the bike's performance and its elegance.

Is the superthin bearing available as a spare part?

Yes. The upper superthin bearing is not normally available on the market but is a design owned by Wilier Triestina and will only be available in authorized dealer's shops.

Which axles are available for Filante SL?

The design of the frame is of the Speed Release type. The bike is shipped with traditional Miche full-extension thru-axle system as standard model.

What configurations are possible with the Filante SL?

Filante SL can be assembled only with electronic shifting and disc brakes.

What tires can I install on Filante SL?

The standard bicycle is fitted with 28 mm tires. The frame can accommodate tires with a maximum of 30 mm of actual width.

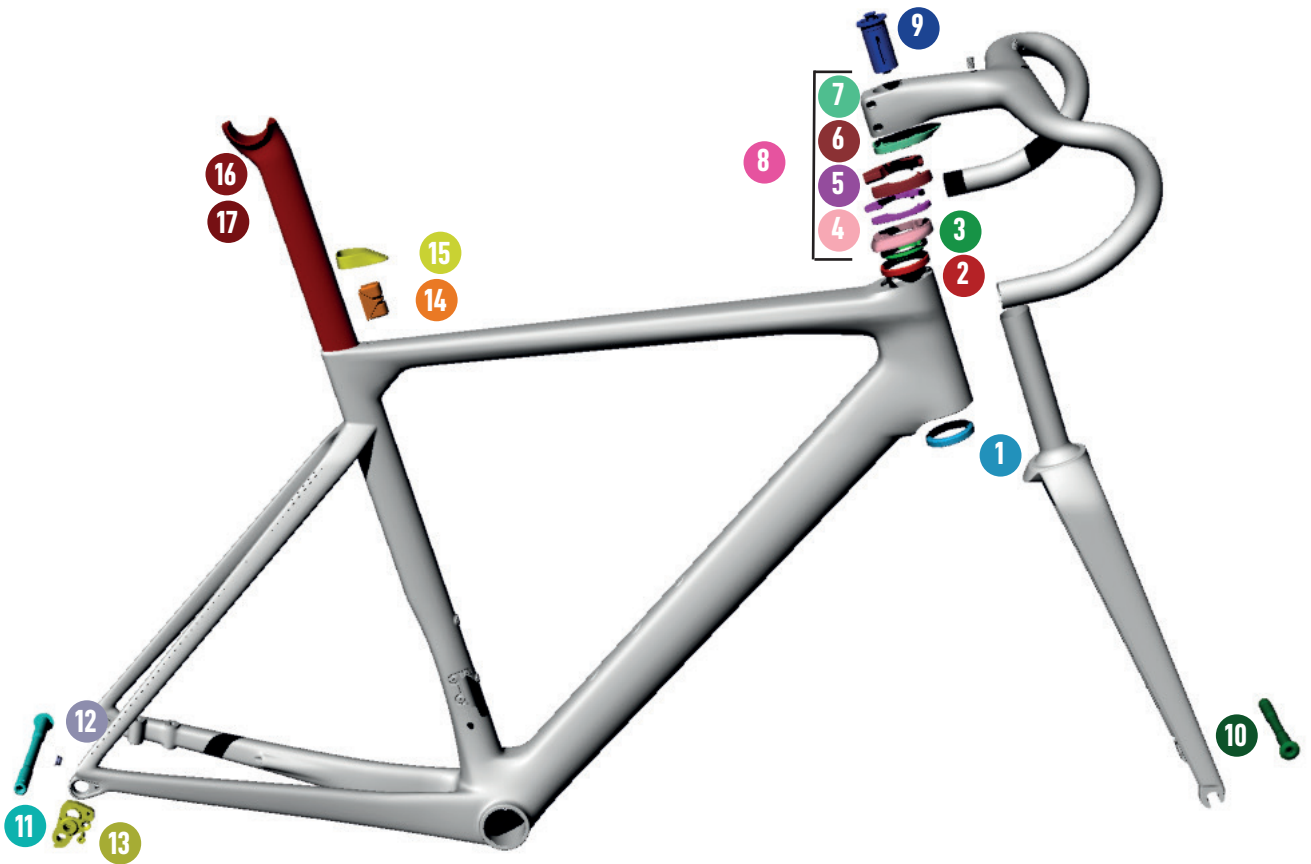
Are the frame parts the same as the Filante SLR?

Yes. Seatpost, spacers, top cover, dropout and all metal parts are the same as Filante SLR.

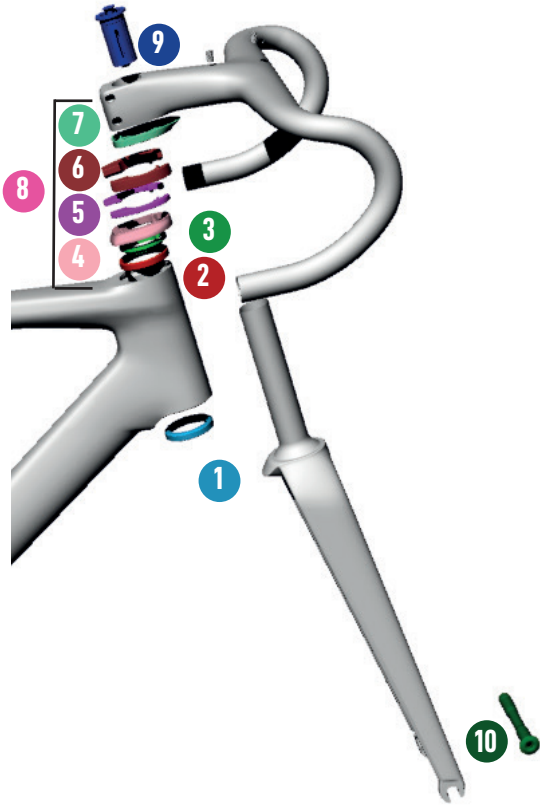


FILIANTE_{SL}

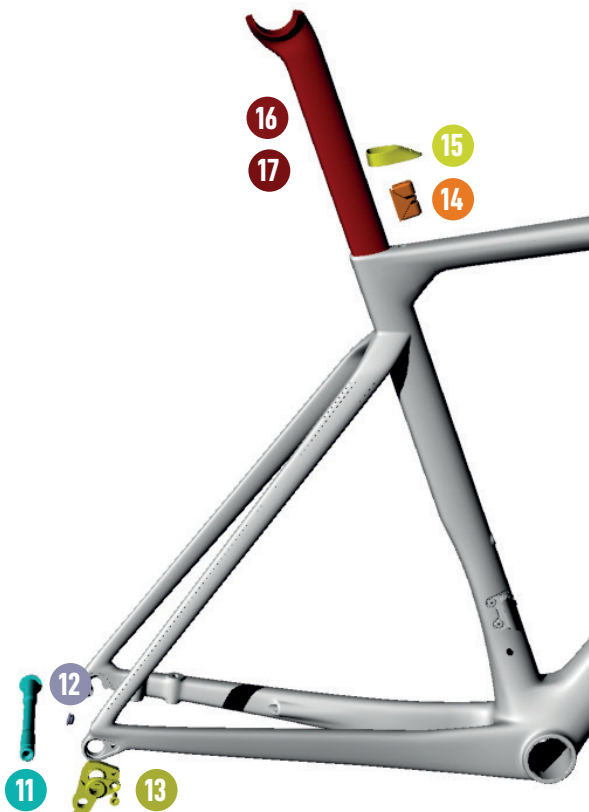
SPARE PARTS



FILANTE^{SL}



SPARE PARTS		
1	MR137	FSA BEARING
2	WTP-BEARING-SSLIM	SUPER SLIM BEARING
3	WTP-COMPRING-SS	COMPRESSION RING SUPER SLIM
4	W0TC	TOP COVER
5	WTP-ZSPACER5	5mm SPACER
6	WTP-ZSPACER10	10mm SPACER
7	W0TS	TOP SPACER
8	W0KITS	SPACERS KIT
9	HGEXP01	EXPANDER FORK 1" 1/8 ALLOY
10	QRPERFOB00000-1	MICHE PERNO 12X118 FRONT



SPARE PARTS		
11	QRPERROB00000-1	MICHE PERNO 12X165 REAR
12	CCN009-1	RUBBER PLUG REAR STAY Di2
13	WORDROP	REAR DROPOUT
14	WTP-SPEXP	SEATPOST EXPANDER
15	WTP-SPSHIELD-F	RUBBER PLUG - SEATPOST
16	AFT-STFILAO	FILANTE SEATPOST 0OFFSET
17	AFT-STFILA-15	FILANTE SEATPOST -15OFFSET



