

Wilier **TRIESTINA**

GRANVITURISMO^{SLR}

TECHNICAL INTRODUCTION
REV.01

GRANTURISMO^{SLR}

Granturismo SLR is the racing bike designed to bring out the utmost performance and comfort. With Granturismo SLR you will be able to travel long distances, minimising postural stress thanks to the special endurance geometries and to the Actiflex 2.0 system, a renewed version of the rear micro-shock absorber developed in 2017 for the Cento10 NDR.



GRANTURISMO^{SLR}**ACTIFLEX 2.0**

The heart of Granturismo SLR is the Actiflex 2.0 vibration damping system that enables the rear wheel to obtain up to 5mm in vertical travel. The 2.0 is the updated version of Actiflex that was featured on Cento10 NDR, the winner of the 2017 Eurobike Award and of the prestigious Tour Magazin Reader's Award in 2018.

**NEW DESIGN, HIGHER EFFICIENCY**

Actiflex 2.0 gives Granturismo SLR a smooth and comfortable ride. Torsional stiffness and responsiveness are guaranteed by numbers very close to those featured on other Wilier racing bikes, thanks to the bridge on the rear stays and the new positioning of Actiflex near to where the seat tube and top tube intersect.

When redesigning Actiflex, one of the main goals was to achieve maximum frame integration, not just for aesthetic purposes but also to make it more functional. In its new position, Actiflex is protected from dirt, mud, sand and rain, offering an ideal solution to allow the four bearings to work easily without having to worry about future maintenance. The double-screw locking system makes disassembling Actiflex 2.0 easy.

**TWO TYPES OF ELASTOMER**

The rear wheel travel is regulated by an elastomer made of viscoelastic material. In models featuring Shimano Dura Ace Di2 12V, Sram Red AXS and Campagnolo Super Record WRL setups, the elastomer is replaced with a 3D printed conformal lattice structure, a solution that reduces the overall weight of the frame by a further 20g.



17 WTP-ACT2V3DS / WTP-ACT2V3DH



GRANTURISMO^{SLR}**RACING COMFORT GEOMETRIES**

The frame's geometries play a fundamental role when it comes to endurance bikes. To guarantee the highest racing and comfort levels, different frame tube proportions must be taken into account. The position is slightly shorter (less reach compared to bikes with traditional racing geometries) and higher (greater stack in comparison to racing geometries).

This combination of reach and stack provides a more comfortable position without the need for spacers between the handlebar stem and the frame. How many times do cyclists ride pure racing bikes with centimetres of spacers on the head tube? With Granturismo SLR the bike will appear more harmonious, well-proportioned, and balanced while maintaining its racing character.

HIGH END CARBON

The carbon mix used for Granturismo SLR is HUS-MOD combined with Liquid Crystal Polymer, the special fibre incorporated in the carbon mesh that adds vertical elasticity while increasing torsional stiffness. This solution is also widely used in other top-range products such as Filante SLR and Wilier O SLR.

AERODYNAMICS IN THE ENDURANCE WORLD AS WELL

Cycling long distances means spending long hours on the saddle. And, although Granturismo SLR doesn't offer maximum competition performance, aerodynamics is still important, even in a bike of this type. Because when you're spending hours on the saddle, even small details and enhancements can reduce fatigue. So, we've added a number of characteristics derived from Filante SLR (our aerodynamic competition bike). In addition to the optimised tube section, we've considered the very wide fork crown, the integrated monocoque handlebar, and total cable integration.



GRANTURISMO^{SLR}**TIRE CLEARANCE**

A wide fork crown improves aerodynamics and offers a generous wheel clearance. Wheels with tires up to a maximum width of 32 mm can be installed on Granturismo SLR, a perfect size for a modern bike like this one bred for endurance.

**CARBON MONOCOQUE HANDLEBAR**

Granturismo SLR mounts a monocoque handlebar that has a rounded ergonomic grip. The spacers, which are the same as those used on the Filante SLR, adapt it perfectly to the frame. Granturismo SLR is compatible with all Wilier Triestina monocoque and modular handlebars.

**REMOVABLE DERAILLEUR SUPPORT**

The derailleur support is removable, just like on Rave SLR. That's because we believe that 1x assemblies will be used increasingly in the near future, even on road bikes not intended for use in competition. For the 1x assembly, we've replaced the derailleur support with a flat plate to preserve the bike's sleek look even without the front derailleur.

**EASY-FIT SPACERS**

The spacers between the frame head tube and the handlebar are made of a high-rigidity composite material, with a special cavity for routing the cables. They consist of two parts for quick assembly and disassembly, without interfering with the cables that run from the handlebar to the frame.



GRANTURISMO^{SLR}

COLOR	FADED RED, WHITE
FINISH	GLOSSY
COLOR CODE	R8



COLOR	FADED SILVER, EMERALD
FINISH	GLOSSY
COLOR CODE	R9



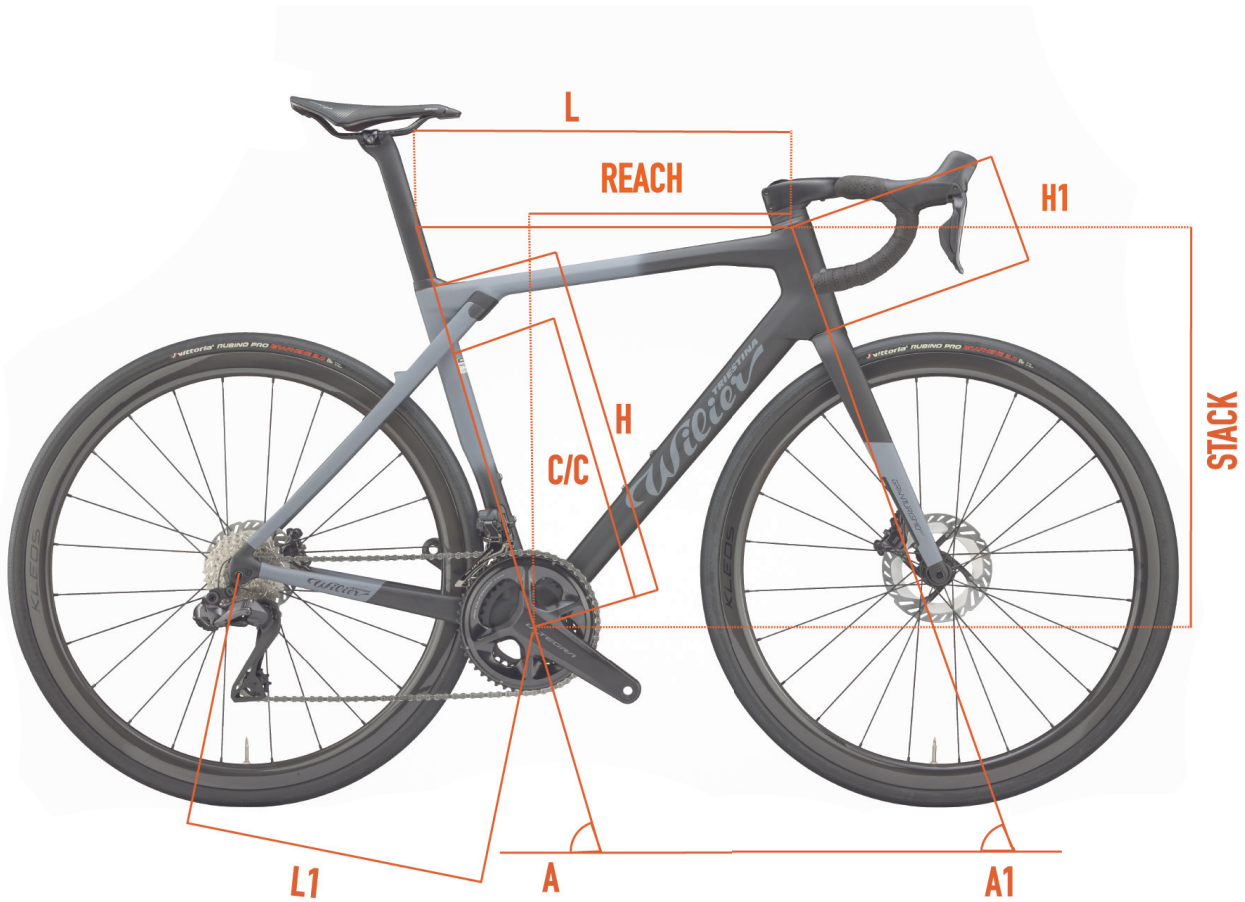
GRANTURISMO^{SLR}

COLOR	FADED BLACK, GREY
FINISH	MATT
COLOR CODE	R10



GRANTURISMO^{SLR}

GEOMETRIES AND SIZES

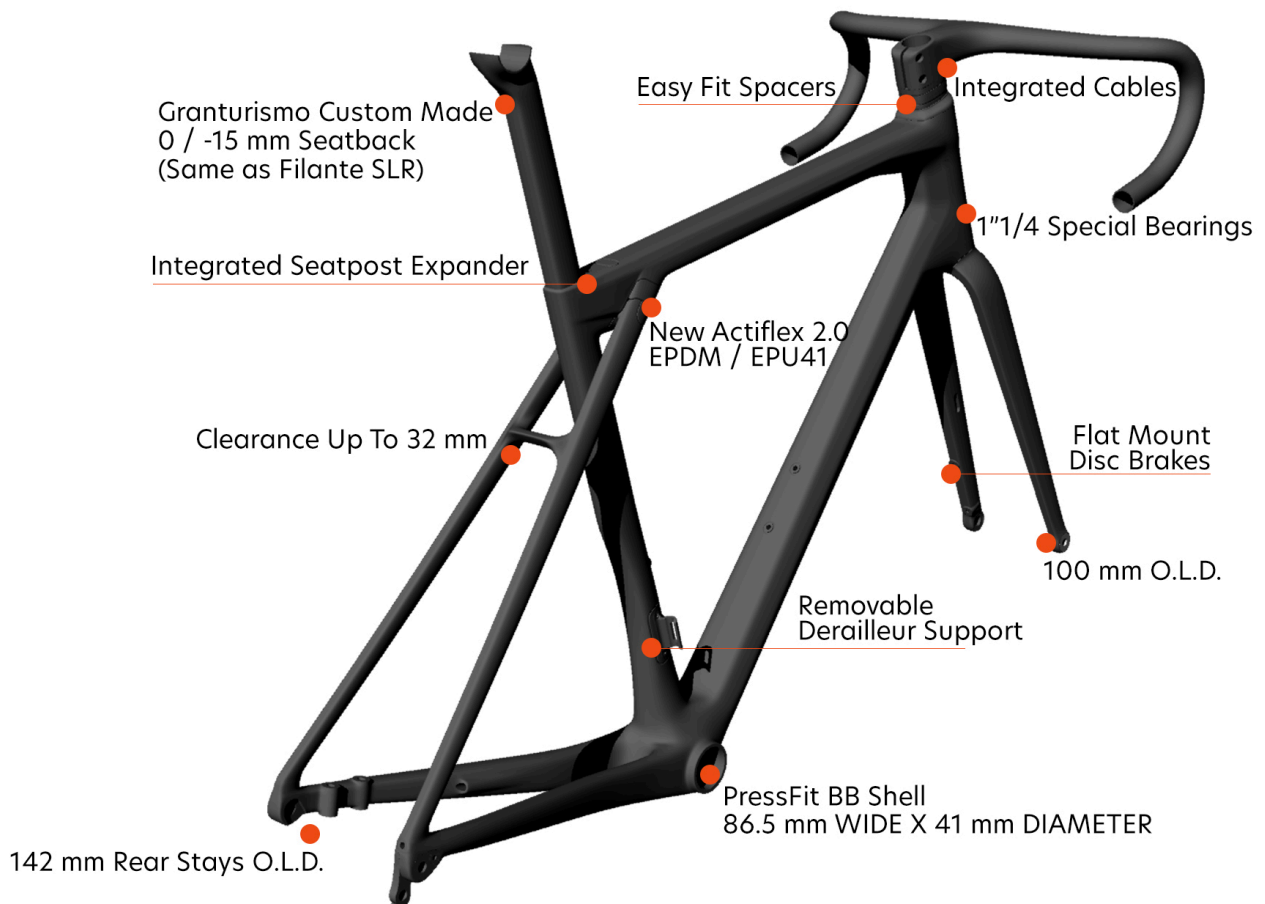


	C/C	L	H	A	H1	L1	A1	REACH	STACK	WHEEL-BASE
SIZE	[cm]	[cm]	[cm]	[°]	[cm]	[cm]	[°]	[mm]	[mm]	[mm]
XS	43.8	51.7	45	74.5	11.7	40.9	71	369	527	977
S	46.7	53.2	48	74	13.6	40.9	71.5	374	546	985
M	48.6	54.7	50	73.5	15.7	41.2	72	379	566	995
L	50.5	55.8	52	73.5	17.7	41.2	72.5	384	586	1002
XL	52.4	57.4	54	73	19.6	41.2	72.5	389	604	1013
XXL	54.3	59.2	56	72.5	21.7	41.4	72.5	395	625	1027



GRANTURISMO^{SLR}

KEYPOINTS



FRAME AND TECHNICAL SPECS DETAILS - DISC VERSION

HEADTUBE	1"1/4 - 1"1/4
UPPER BEARING	WTP-BEARING-SS 39 X 46.9
LOWER BEARING	FSA MR137
FRONT FORK O.L.D.	100 mm
REAR STAYS O.L.D.	142 mm
BB SHELL	SHIMANO PRESS FIT (86.5 wide x 41 diameter)
SEAT POST	WILIER SEATPOST 0/-15
FRONT DERAILLEUR TYPE	BRAZED ON
SEATPOST EXPANDER	WTP-SPEXP

FAQ

What is the main feature of Granturismo SLR?

Granturismo SLR is the Wilier Triestina high-end endurance bike for professional use. Thanks to Actiflex 2.0 and relaxed geometries, Granturismo SLR is the ideal bike for spending hours on the saddle, comfortably.

How much does the frame weigh?

The frame weighs 1100 grams for a painted size M, including the Actiflex 2.0 cushioning system.

What transmissions can be installed on Granturismo SLR?

Granturismo SLR is intended for professionals and anyone who wants a high performance bike while maintaining a high level of comfort. The bike can only be equipped with electronic shifting and disc brakes.

What tires can be installed on Granturismo SLR?

The standard bicycle is fitted with 28 mm tires. The frame can accommodate tires with a maximum of 32 mm of actual width.

What type of stem/handlebar can I install on Granturismo SLR?

The standard bicycle is fitted with Z Bar. With Wilier Triestina easy-fit spacers, Filante Bar, J Bar, and O Bar can also be installed.

Do the integrated cables pass through the handlebar?

The cables are integrated inside the frame, running through the superthin bearing and inside the integrated handlebar.

Is the superthin bearing™ available as a spare part?

Yes. The upper superthin bearing is not normally available on the market but is a design owned by Wilier Triestina and will only be available at Wilier Triestina official dealers.

Is Actiflex 2.0 available in other versions?

"Actiflex 2.0 is the new suspension system introduced for Wilier Triestina's road-bike line. It's made to absorb vibrations caused by uneven ground and comes in two different versions: soft (for sizes XS, S, and M) and hard (for sizes L, XL, and XXL). Both versions can be ordered separately from any official Wilier Triestina dealer. The top-range setups will be factory-fitted with 3D printed conformal lattice elastomer. However, it will also be available as a spare part from official Wilier Triestina dealers."

Which axles are available for Granturismo SLR?

Granturismo SLR can be equipped with traditional thru axles. The front axle measures 12x100, while the rear axle is 12x142.

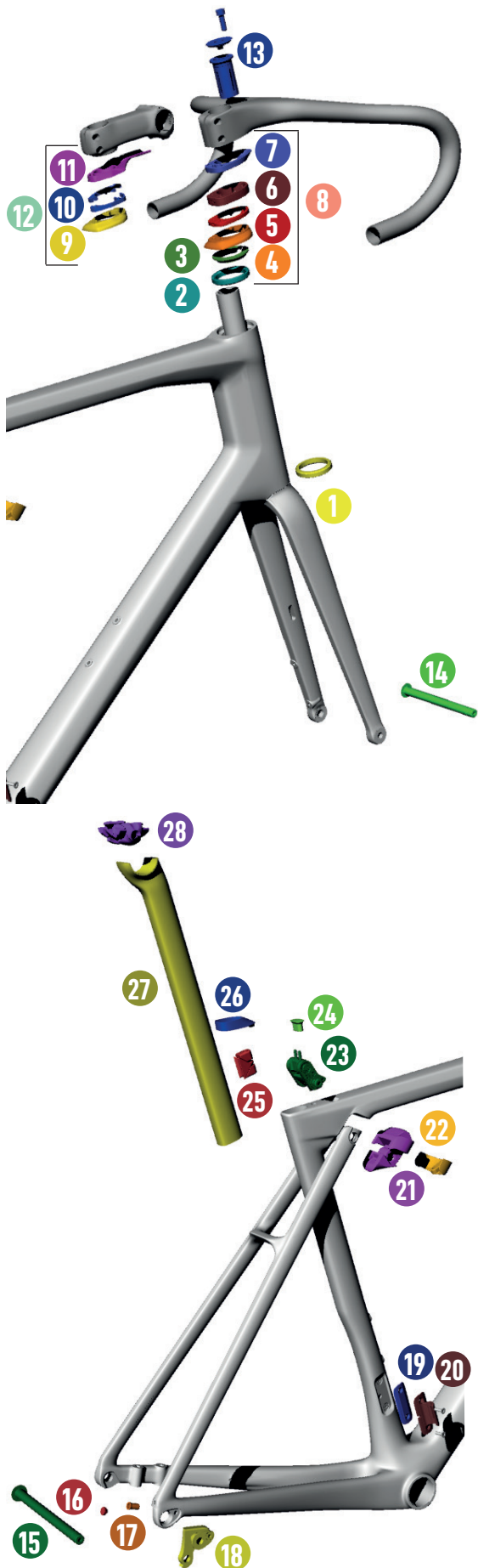


GRANTURISMO^{SLR}

SPARE PARTS



GRANTURISMO^{SLR}



SPARE PARTS

1	MR137	FSA BEARING 1-1/4"
2	WTP-BEARING-SSLIM	BEARING SUPERSLIM 39 X 46.9 X 7
3	WTP-2SCOMPRI	COMPOSITE COMPRESSION RING
4	W0TC	TOP COVER
5	WTP-ZSPACER5	SPACER 5MM (DX+SX)
6	WTP-ZSPACER10	SPACER 10MM (DX+SX)
7	W0TS	TOP SPACER
8	W0KITS	SPACERS KIT
9	33000816022	RITCHEY HEADSET TOP CAP BLK
10	33000816019	RITCHEY HEADSET 5MM SPACER BLK
11	33000816015 33000816016 33000816017 33000816018	RITCHEY HEADSET SPACER CGUIDE X110/120MM RITCHEY HEADSET SPACER CGUIDE X100MM RITCHEY HEADSET SPACER CGUIDE X90MM RITCHEY HEADSET SPACER CGUIDE X80MM
12	KITSWITCHSL80 KITSWITCHSL90 KITSWITCHSL100 KITSWITCHSL110/120	SPACERS KIT PER ATTACCO SWITCH SL 80 SPACERS KIT PER ATTACCO SWITCH SL 90 SPACERS KIT PER ATTACCO SWITCH SL 100 SPACERS KIT PER ATTACCO SWITCH SL110/120
13	HGEXP01	EXPANDER FORK 1" 1/8 ALLOY
14	QRPERF0B26000	MICHE PERNO 12X126.5 ANT
15	QRPERR0B72000	MICHE PERNO 12X172.5 POST
16	HGACCEP.3	RUBBER PLUG CCN009
17	WTP-RUBRD	PLUG FOR INTERNAL FRAME ROUTING
18	HGACCE59.5	KIT DROPOUT
19	FDCOV1X	INTERCHANGEABLE FD COVER
20	WTP-REMFD	FRONT DERAILLEUR SUPPORT
21	WTP-ACTFS WTP-ACTFH	ACTIFLEX 2.0 SOFT VERSION ACTIFLEX 2.0 HARD VERSION
22	WTP-ACTCOV	ACTIFLEX 2.0 COVER
23	WTP-GRFIX	FIXATION SYSTEM FOR ACTIFLEX 2.0
24	WTP-GRBLOCK	SERRATION BLOCK FOR ACTIFLEX 2.0
25	WTP-SPEXP	GRANTURISMO SEATPOST EXPANDER
26	WTP-SPSHIELD-F	SEATPOST RUBBER SEAL
27	AFT-STFILA-0 AFT-STFILA-15	SEATPOST FILANTE -0 OFFSET SEATPOST FILANTE -15 OFFSET
28	55055466007 55055467011	RITCHEY CLAMP 7X7 WCS ALU HPB RITCHEY CLAMP 7X9.6 CARB. SEAT. AFT



