

ELIANTE^{SLR}

FILANTE^{SLR}

2

WILIERPEDIA 2025

ROAD COLLECTION

The natural evolution of Cento10PRO, our high-end aerodynamic bike used by professionals.

Filante SLR is an extremely lightweight aerodynamic bicycle with a significantly improved stiffness-to-weight ratio.

The result is a top-of-the-range, aerodynamic frame that complements our pure ascent bike used by Groupama - FDJ Cycling Team.

FILANTE^{SLR}**AERODYNAMIC**

Filante SLR was designed to maximise aerodynamic performance in real environmental conditions. The design was based on data recorded in the wind tunnel (where the wind is very clean for homogeneous empirical results) while also taking the real world into account. In this way, we not only evaluate typical wind tunnel data (yaw angles from -20° to $+20^\circ$), but also consider environmental turbulence that impacts the bike for many different reasons. That's why we redesigned the profiles, starting with the standard NACA airfoils/ KAMM tail that no longer have sharp edges on the back. The softened angles improve performance even when the air flow is disturbed.

The inside of the front fork has been widened by 7 mm, making it 13.6% wider than the Cento10PRO. In doing so, we moved the fork blades away from the wheel, reducing turbulence and improving aerodynamics.

**HANDLEBAR AND INTEGRATED CABLES**

In addition to being lightweight, (350 grams for the 101x42 size) the integrated carbon monocoque Filante Bar handlebar houses the brake and derailleur cables, directing them toward the inside of the frame. Its design is very simple, with sinuous and rounded lines for maximum grip ergonomics.

EASY-FIT SPACERS

The spacers between the frame headset and the handlebar are made of a high-stiffness composite material, with a special cavity for the cables. They are composed of two parts for quick assembly and disassembly without interfering with the cables running from the handlebar to the frame.



FILIANTE^{SLR}**LIGHTWEIGHT AND RESPONSIVE**

The new aerodynamically optimised profiles helped us eliminate extra weight in the frame's construction. The shape has no sharp edges, therefore requires less material and less resin in the corners. This improves homogeneity of the inside, reducing the frame's weight to a mere 870 grams.

The assembled bike with top-of-the-range specifications weighs 6.8 kg.

Thanks to the different types of carbon we used in combination with the Liquid-Crystal Polymer, the unique fibre positioning and the construction technology, we have reached an absolute level of lightness and stiffness.

The lower overall weight compared to the exceptional stiffness increases STW by 12.5%. This improvement is clearly felt with the steering precision and the feeling of safety at high speeds.

**SRAM RED AXS X FILIANTE SLR**

Every part of RED has been refined to create an effortless ride. Light brake feel and comfortable ergonomics, smooth front shifting, fully wireless connectivity, and expanded gearing choices fit every rider and their needs. RED is packed with features, such as accurate and reliable power measurement, new shift points, and more brake adjustability, while still shaving grams off every component to bring you the lightest electronic groupset ever.



FILIANTE^{SLR}**240 FITTINGS AVAILABLE**

Since the fork steerer tube is no longer bevelled, we can install up to 35 mm of spacers under the handlebar. By combining frame sizes, handlebar sizes, and spacers, we can achieve 240 different fittings, with no overlap between combinations. This doubles with the two available seat posts, with a 15 mm or 0 mm setback.

BALANCED DESIGN

Six sizes, one feeling. The sections of the tubes of various sizes were designed to maintain consistent rigidity, handling quality and comfort on every frame size.

**SPEED RELEASE THRU AXLE SYSTEM**

Another new feature is the Mavic Speed Release thru axle system that enables the wheel to be quickly removed from the frame. In this way the axle does not need to be totally extracted from the wheel hub. This solution significantly reduces wheel release and insertion time. During races, this solution cuts wheel change times by 7 seconds on average compared to a traditional thru axle system.



FILIANTE^{SLR}

COLOR	VELVET RED
FINISH	GLOSSY
COLOR CODE	F1



COLOR	RAMATO
FINISH	GLOSSY
COLOR CODE	F8



FILIANTE^{SLR}

COLOR	GRAPHITE SILVER, BLUE
FINISH	GLOSSY
COLOR CODE	F9



COLOR	MOON GREY
FINISH	GLOSSY
COLOR CODE	F10



FILIANTE^{SLR}

COLOR	GRAPHITE WHITE, GOLD
FINISH	MATT & GLOSSY
COLOR CODE	F13



COLOR	AZZURRO ITALIA
FINISH	GLOSSY
COLOR CODE	F14



FILIANTE^{SLR}

COLOR	TRICOLORE ITALIA
FINISH	GLOSSY
COLOR CODE	F16



COLOR	GROUPAMA-FDJ
FINISH	GLOSSY
COLOR CODE	F17



FILANTE^{SLR}

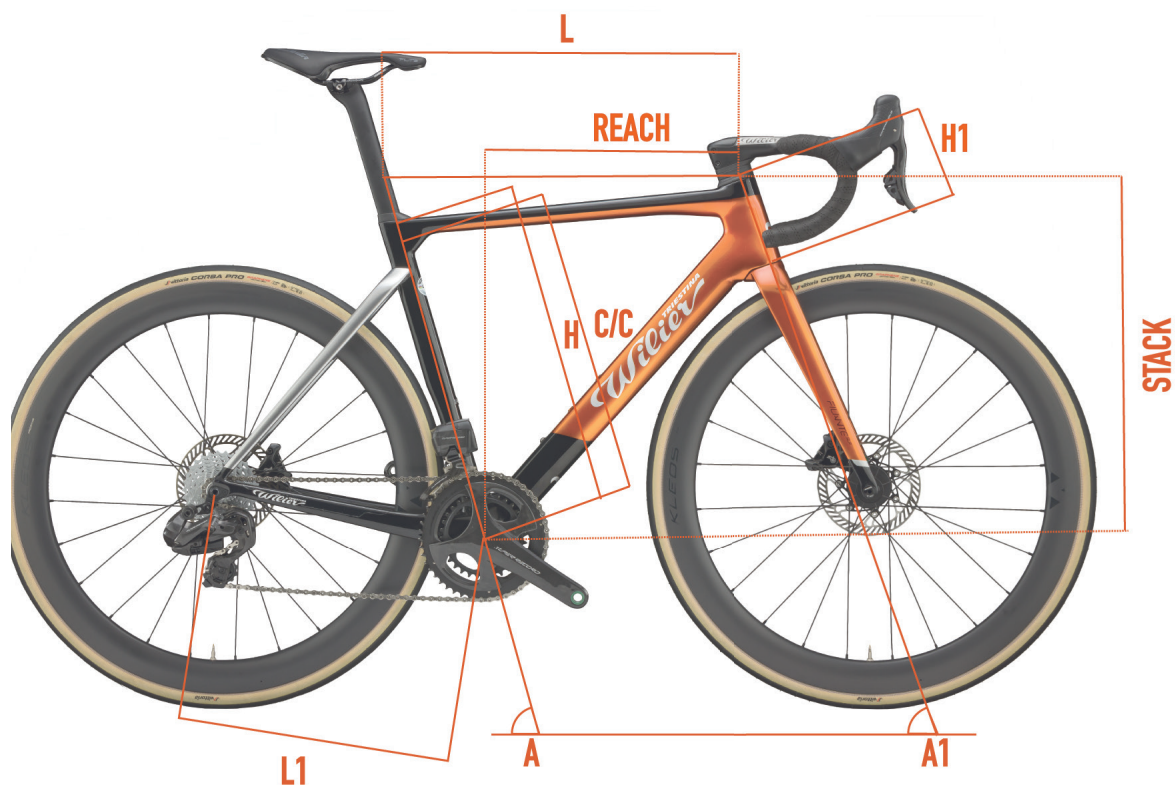
COLOR	GRAPHITE WHITE, GREEN, GOLD
FINISH	GLOSSY
COLOR CODE	F18



COLOR	CVNDSH
FINISH	GLOSSY
COLOR CODE	F21



GEOMETRIES AND SIZES

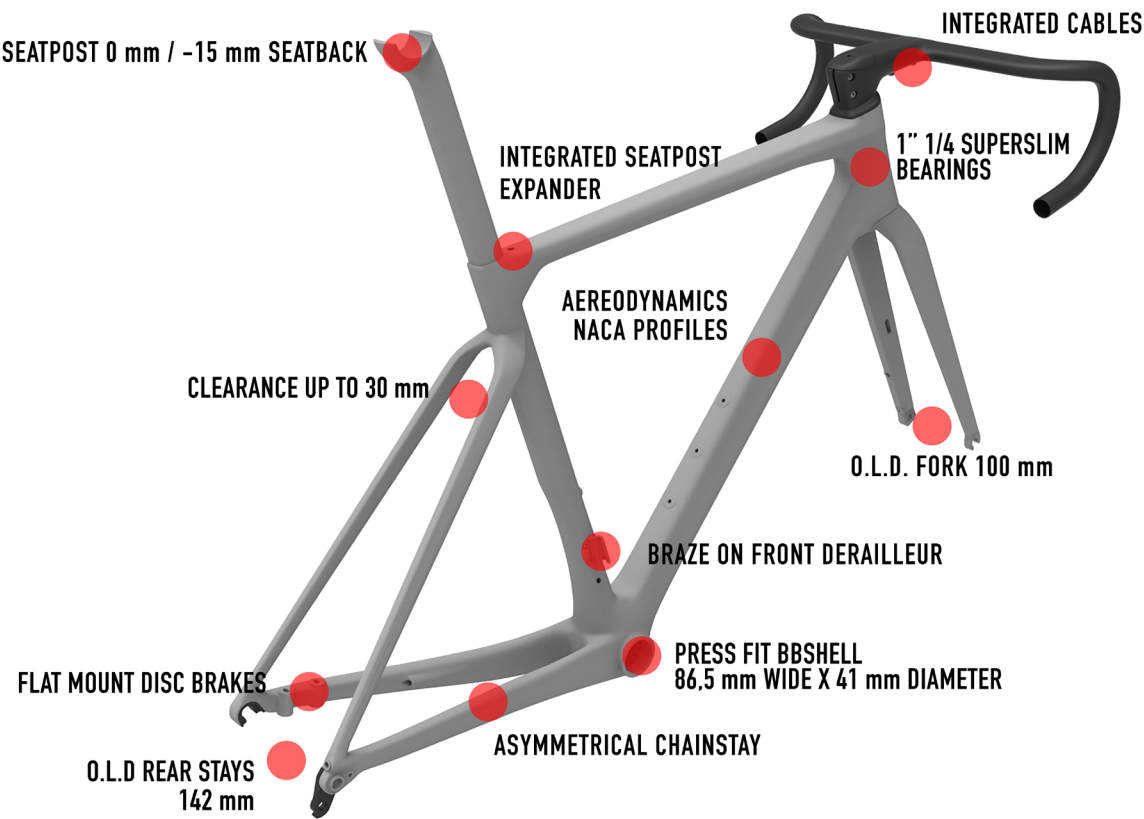


	C/C	L	H	A	H1	L1	A1	REACH	STACK	WHEELBASE
SIZE	[cm]	[cm]	[cm]	[°]	[cm]	[cm]	[°]	[mm]	[mm]	[mm]
XS	43,2	51,5	45	75,2	10,4	40,7	70,8	380	505	981
S	46,2	53	48	74,5	11,9	40,7	72	384	521	984
M	48,2	54,3	50	74	13,5	40,8	72,5	388	538	990
L	50,2	55,6	52	73,5	15,4	41	73	391	555	997
XL	52,2	57	54	73	16,6	41,1	73	395	571	1002
XXL	54,2	58,3	56	72,5	18,1	41,1	73,5	399	587	1006



FILANTE^{SLR}

KEYPOINTS



FRAME AND TECHNICAL SPECS DETAILS - DISC VERSION	
HEADTUBE	1"1/4 - 1"1/4
UPPER BEARING	WTP-BEARING-SS 39 X 46.9
LOWER BEARING	FSA MR137
FRONT FORK O.L.D.	100 mm - MICHE LIGHT RD 12X119.5
REAR STAYS O.L.D.	142 mm - MICHE LIGHT RD 12X166.5
BB SHELL	SHIMANO PRESS FIT (86.5 wide x 41 diameter)
SEAT POST	WILIER SEATPOST 0/-15
FRONT DERAILLEUR TYPE	BRAZED ON
SEATPOST EXPANDER	WTP-SPEXP



FAQ

How much does the frame weigh?

The frame weighs 870 grams for a painted size M.

What transmissions can be installed on the Filante SLR?

SLR Filante is intended for professionals. For this reason, the bike can only be equipped with electronic shifting and disc brakes.

What tires can be installed on the Filante SLR?

The standard bicycle is fitted with 28 mm tires. The frame can accommodate tires with a maximum of 30 mm of actual width.

What type of stem/handlebar can I install on Filante SLR?

The standard bicycle is fitted with Filante Bar, available in five different sizes. With Wilier Triestina carbon spacers, V-bar and Z-bar can also be installed.

Why do the handlebar stems have non-traditional lengths?

The handlebar stems have been optimized to have more real fitting coverage. In this way, 240 accufit points without overlapping allow every rider to find the perfect position on the Filante SLR.

Do the integrated cables pass through the handlebar?

The cables are integrated inside the frame, running through the superthin bearing and inside the integrated handlebar.

Is the superthin bearing available as a spare part?

Yes. The upper superthin bearing is not normally available on the market but is a design owned by Wilier Triestina and will only be available in Wilier Triestina B2B in the spare parts section.

What are the sizes of the thru axle system?

The frame design is of the Speed Release type, with 12x100mm measurements at the front and 12x142mm at the rear. The bike comes standard with a specific Miche thru-axle system.



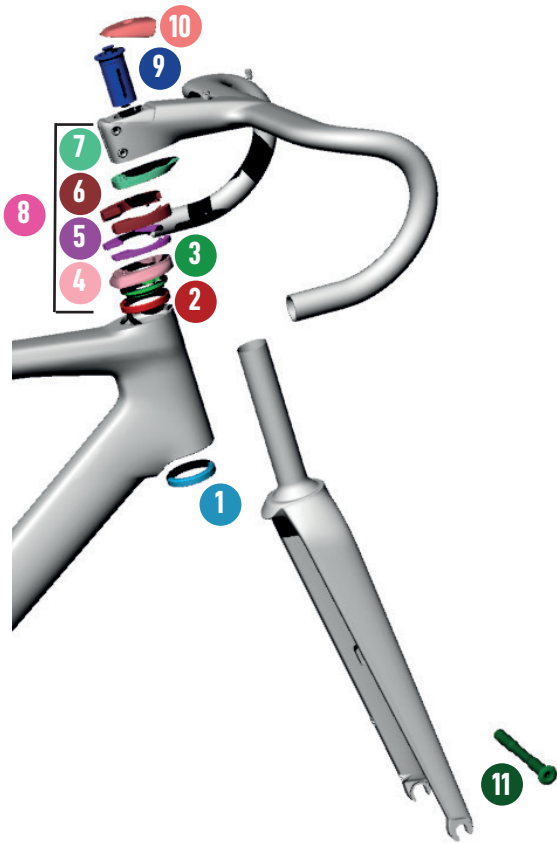
FILIANTE^{SLR}

SPARE PARTS

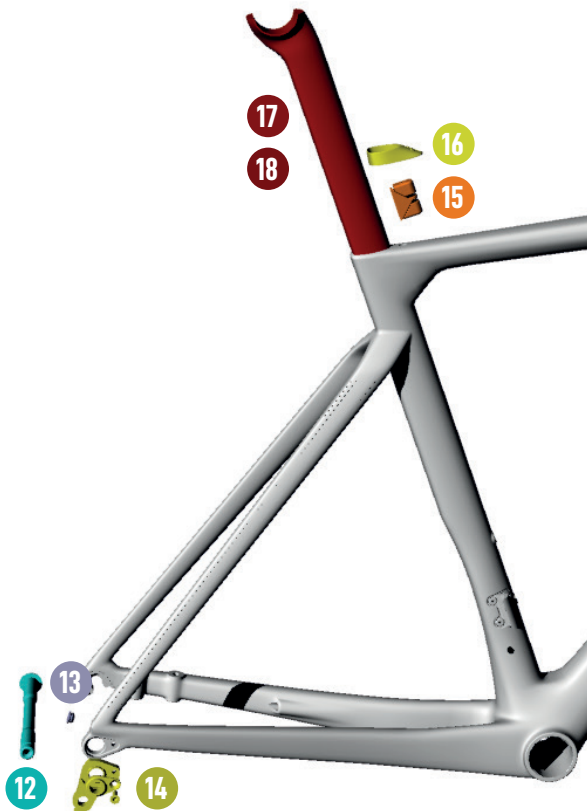


FILANTE^{SLR}

SPARE PARTS



SPARE PARTS		
1	MR137	FSA BEARING
2	WTP-BEARING-SSLIM	SUPER SLIM BEARING
3	WTP-COMPRING-SS	COMPRESSION RING SUPER SLIM
4	W0TC	TOP COVER
5	WTP-ZSPACER5	5mm SPACER
6	WTP-ZSPACER10	10mm SPACER
7	W0TS	TOP SPACER
8	W0KITS	SPACERS KIT
9	HGEXP01	EXPANDER FORK 1" 1/8 ALLOY
10	WFBTC	TOP CAP FILANTE BAR
11	QRPERF0B19000	PERNO LIGHT RD 12X119.5 ANT



SPARE PARTS		
12	QRPERROB66000	PERNO LIGHT RD 12X166.5 POST
13	CCN009-1	RUBBER PLUG REAR STAY Di2
14	WORDROP	REAR DROPOUT
15	WTP-SPEXP	SEATPOST EXPANDER
16	WTP-SPSHIELD-F	RUBBER PLUG - SEATPOST
17	AFT-STFILA0	FILANTE SEATPOST 0OFFSET
18	AFT-STFILA-15	FILANTE SEATPOST -15OFFSET



