



GRANVITURISMO^{SL}

TECHNICAL INTRODUCTION
REV.01

GRANTURISMO_{SL}



The Granturismo endurance range has been extended with the introduction of the SL version, designed to bring to everyday rider, the quality and performance of the flagship SLR model, but with a new twist when it comes to tyre clearance.

GRANTURISMO_{SL}



PERFECTION LIES IN BALANCE

The Granturismo SL allows to tackle long distances with greater comfort. The high-quality materials and features sed in the frame construction ensure that vertical shocks are dampened while maintaining outstanding responsiveness.

TYRE CLEARANCE

The generous tyre clearance allows a tyres clearance up to 38mm, effectively turning it into a true all-road bike.



CARBON UDH® DROPOUT AND SEATPOST, FOR AN EVEN MORE MODERN BIKE

A modern frame with a carbon seatpost and UDH® dropout. The new UDH® standard makes it possible to choose freely between conventional and SRAM derailleurs with the new T-Type interface.

SLEEK LINES AND STYLE

When using single-crown groupsets, the front derailleur coupling can be removed, transforming the Granturismo SL into an even more streamlined and modern-looking bike.



SL PHILOSOPHY FOR AN AFFORDABLE ENDURANCE BIKE

This model strikes the perfect balance between innovation, comfort and convenience, confirming once again Wilier's commitment to making its state-of-the-art bicycles accessible to all cycling enthusiasts.



GRANTURISMO_{SL}

COLOR	BLACK, SILVER
FINISH	GLOSSY
COLOR CODE	R11

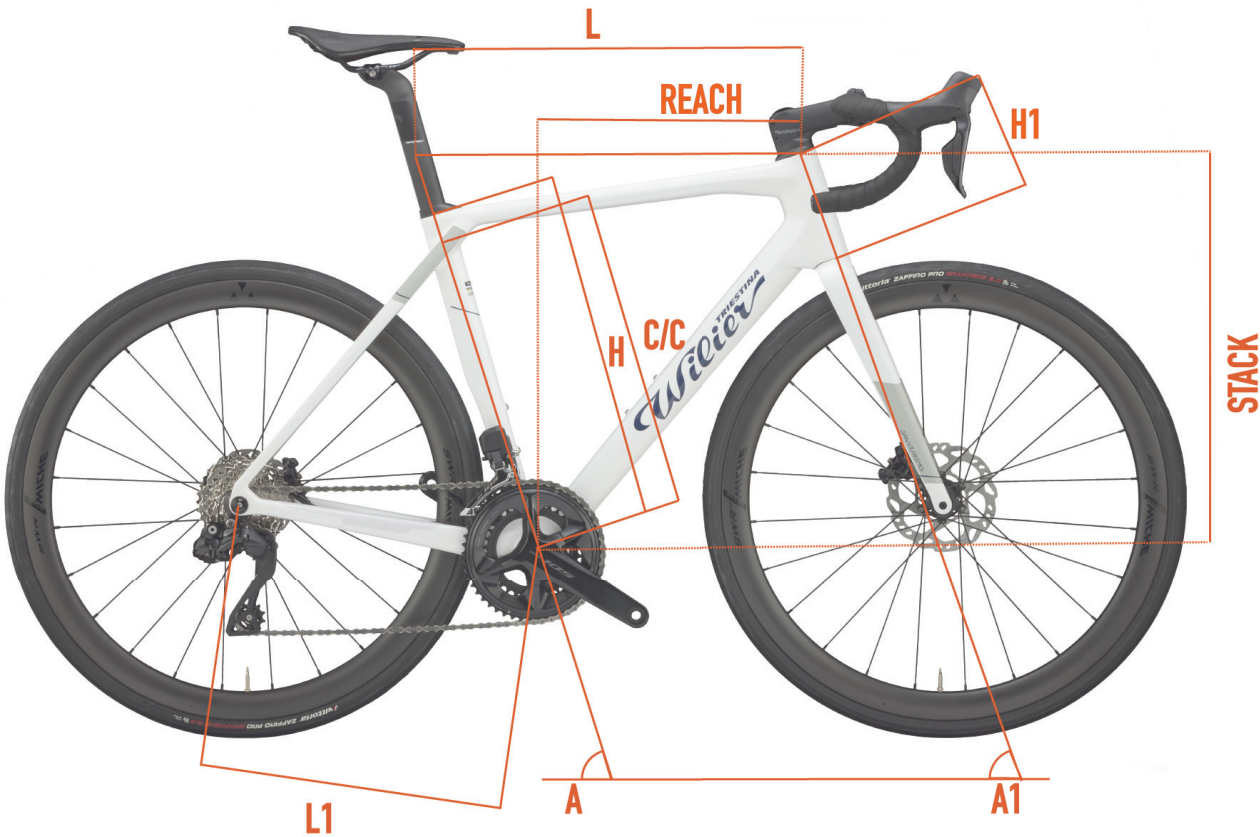


COLOR	WHITE, BLUE
FINISH	GLOSSY
COLOR CODE	R12



GRANTURISMO_{SL}

GEOMETRIES AND SIZES

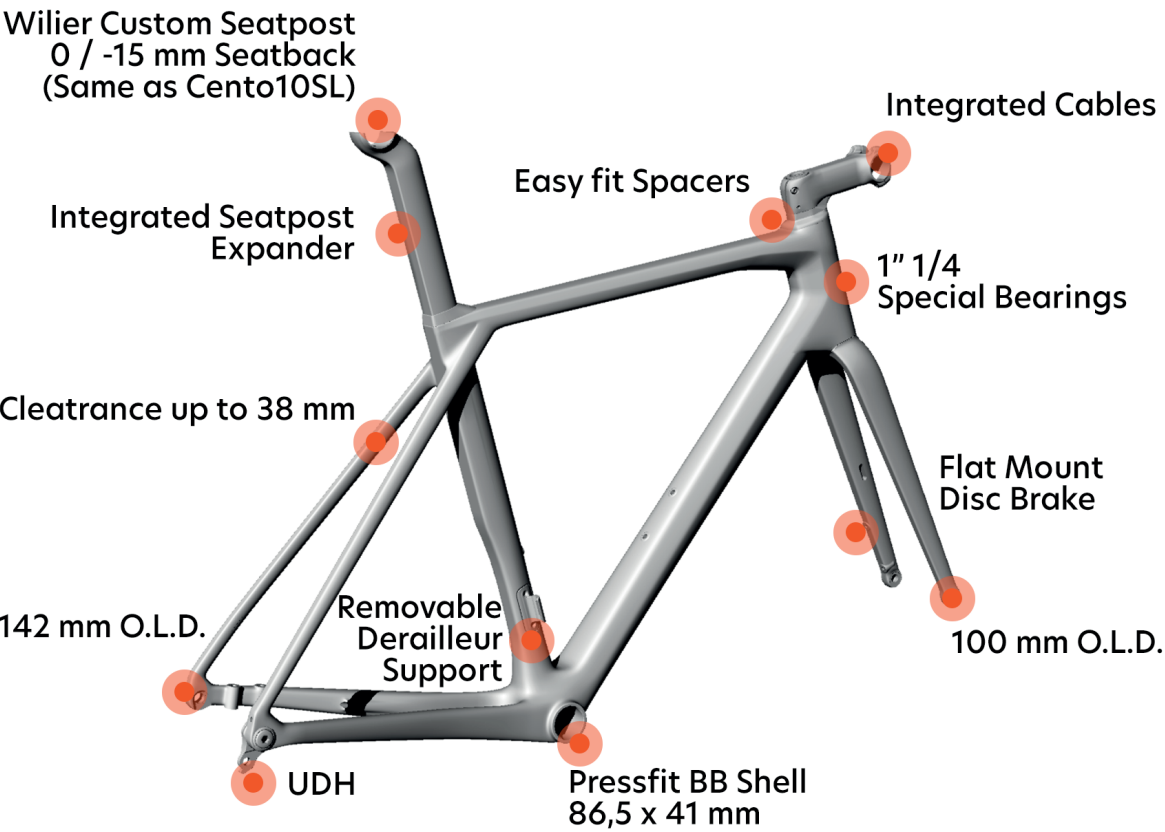


	C/C	L	H	A	H1	L1	A1	REACH	STACK	WHEELBASE
SIZE	[cm]	[cm]	[cm]	[°]	[cm]	[cm]	[°]	[mm]	[mm]	[mm]
XS	43.8	51.7	45	74.5	11.7	42	71	369	527	989
S	46.7	53.2	48	74	13.6	42	71.5	374	546	996
M	48.6	54.7	50	73.5	15.7	42	72	379	566	1003
L	50.5	55.8	52	73.5	17.7	42	72.5	384	586	1010
XL	52.4	57.4	54	73	19.6	42	72.5	389	604	1021
XXL	54.3	59.2	56	72.5	21.7	42	72.5	395	625	1033



GRANTURISMO_{SL}

KEYPOINTS



FRAME AND TECHNICAL SPECS DETAILS - DISC VERSION	
HEADTUBE	1"1/4 - 1"1/4
UPPER BEARING	WTP-BEARING-SS 39 X 46.9
LOWER BEARING	FSA MR137
FRONT FORK O.L.D.	100 mm
REAR STAYS O.L.D.	142 mm
BB SHELL	PRESS FIT (86.5 wide x 41 diameter)
SEAT POST	WILIER SEATPOST 0/-15
FRONT DERAILLEUR TYPE	REMOVABLE FD Support
SEATPOST EXPANDER	WTP110A-9

GRANTURISMO_{SL}

FAQ

What is the main feature of Granturismo SL?

Granturismo SL is a Wilier Triestina high-end endurance bike for professional use. Thanks to Actiflex 2.0 and relaxed geometries, Granturismo SL is an ideal bike for spending hours on the saddle, comfortably.

How much does the frame weigh?

The frame weighs 1210 grams for a painted size M.

What transmissions can be installed on Granturismo SL?

Granturismo SL is intended for anyone who wants a high performance bike while maintaining a high level of comfort. The bike can only be equipped with electronic shifting and disc brakes.

What tires can be installed on Granturismo SL?

The standard bicycle is fitted with 28 mm tires. The frame can accommodate tires with a maximum of 38 mm of actual width.

Do the integrated cables pass through the handlebar?

The cables are integrated inside the frame, running through the superthin™ bearing and inside the integrated handlebar.

Is the superthin bearing™ available as a spare part?

Yes. The upper superthin bearing™ is not normally available on the market but is a design owned by Wilier Triestina and will only be available at Wilier Triestina official dealers.

Which axles are available for Granturismo SL?

Granturismo SL can be equipped with traditional thru axles. The front axle measures 12x100, while the rear axle is 12x142.

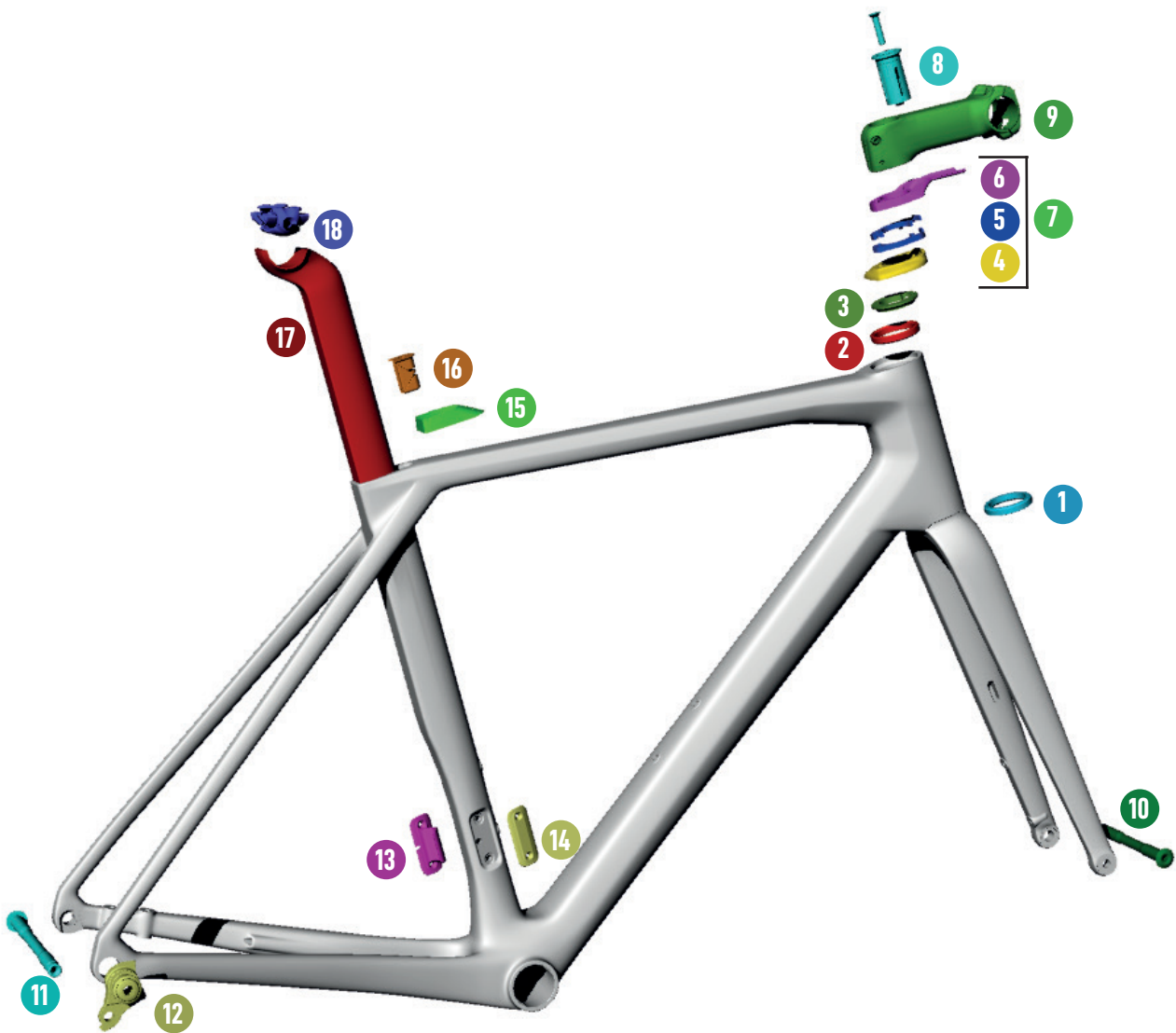
What type of rear dropout is used on the Granturismo SL?

Granturismo SL is designed to be compatible with the UDH® dropout and therefore with the most modern transmission systems.

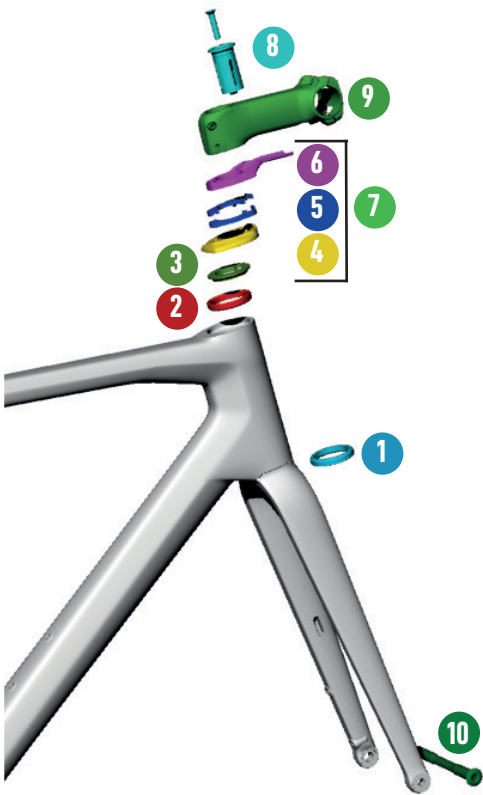


GRANTURISMO_{SL}

SPARE PARTS

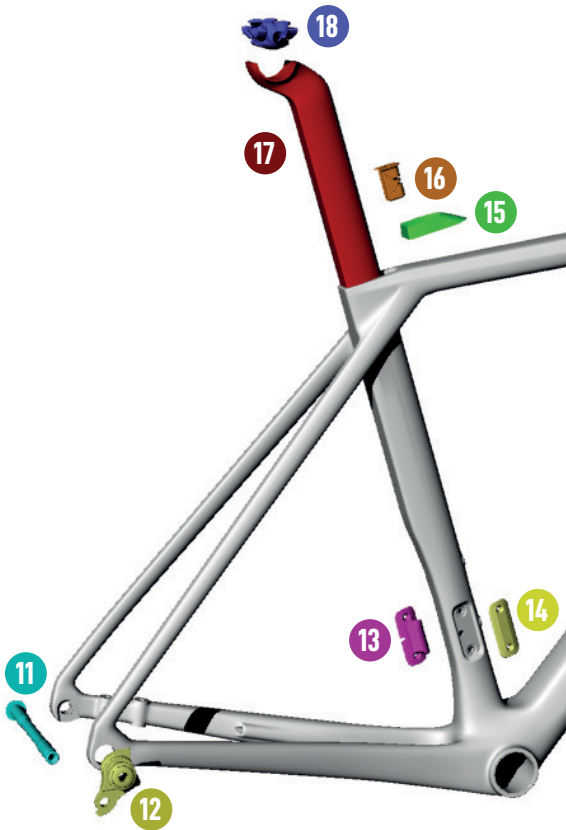


GRANTURISMO_{SL}



- 1
- 2
- 3
- 4
- 5
- 6
- 7
- 8
- 9
- 10

SPARE PARTS	
MR137	FSA BEARING
WTP-BEARING-SSLIM	SUPER SLIM BEARING
WTP-2SCOMPRING	COMPOSITE COMPRESSION RING
33000816022	RITCHEY HEADSET TOP CAP BLK
33000816019	RITCHEY HEADSET 5MM SPACER BLK
33000816015 33000816016 33000816017 33000816018	RITCHEY HEADSET CGUIDE X110/120MM RITCHEY HEADSET CGUIDE X100MM RITCHEY HEADSET CGUIDE X90MM RITCHEY HEADSET CGUIDE X80MM
KITSWITCHSL80 KITSWITCHSL90 KITSWITCHSL100 KITSWITCHSL110/120	SPACERS KIT PER ATTACCO SWITCH SL 80 SPACERS KIT PER ATTACCO SWITCH SL 90 SPACERS KIT PER ATTACCO SWITCH SL 100 SPACERS KIT PER ATTACCO SWITCH SL110/120
HGEXP01	EXPANDER FORK 1" 1/8 ALLOY
31355426157 31355426158 31355426159 31355426160 31355426161	STEMMA SL-SWITCH WCS 80 BLACK STEMMA SL-SWITCH WCS 90 BLACK STEMMA SL-SWITCH WCS 100 BLACK STEMMA SL-SWITCH WCS 110 BLACK STEMMA SL-SWITCH WCS 120 BLACK
QRPERFOB00000-1	MICHE PERNO 12X118 P.1 ANT



- 11
- 12
- 13
- 14
- 15
- 16
- 17
- 18

SPARE PARTS	
XQRPERROB7500	MICHE REAR AXLE M12X1X175.5 UDH
007918089000	SRAM AC UDH DERAILLEUR HANGER
WTP-REMFD	FRONT DERAILLEUR SUPPORT INTERCHANGEABLE
WTP-COVFD	FRONT DERAILLEUR COVER
WTP-SPSHIELD-C	SEATPOST RUBBER SEAL
WTP110A-9	110AIR/PRO SEATPOST EXPANDER
41046116023	RITCHEY SEATPOST GRANT.SL 27/370
55055466007	RITCHEY CLAMP 7X7 WCS ALU HPB



