



RAVE slr

TECHNICAL INTRODUCTION

Rev. 06



Rave SLR ID2 V10 Pixel Green; Sram Red AXS, Miche Graff Aero 48, Carbon F-Bar

A NEW DIMENSION IN GRAVEL RACING

Rave SLR ID2 elevates the concept of gravel racing.

This completely new, fast, versatile and fun bike draws inspiration from the previous model, but is designed with pure off-road racing in mind.

It is an aesthetic manifesto, a tribute to the raw, rebellious energy of underground culture and to the timeless aesthetics of the 1980s and '90s: acid colours that beat to the rhythm of a rave party, feisty lines that conjure up a sense of pure speed, and a design that defies convention.

LIGHTWEIGHT

To achieve the weight target we set, we used the exact same carbon mix as the Filante SLR, just to give you an idea.

These technologies allowed us to achieve an aerodynamic gravel frame weighing under a kilo.

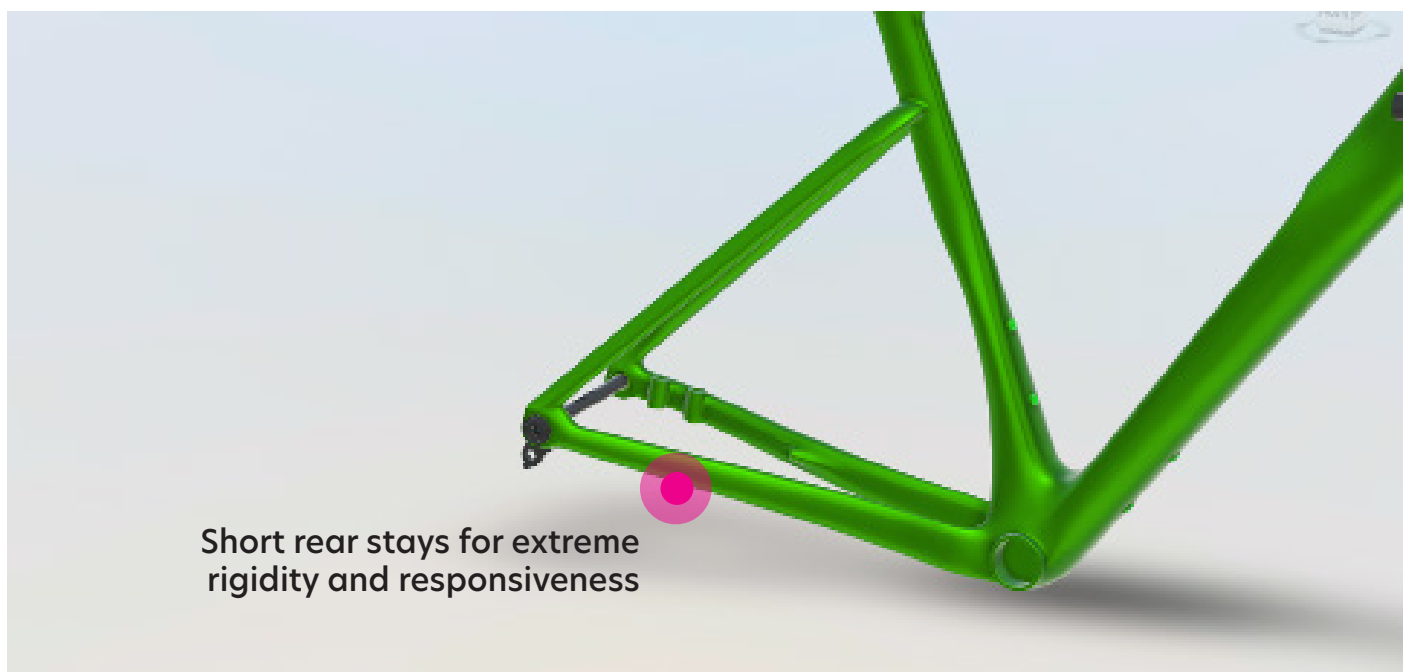
The unfinished frame in size M weighs only 930 grammes.

RESPONSIVE

To achieve a responsive frame, we channelled all the experience gained in the use of technopolymers, mixing carbon with special viscoelastic fibres such as Liquid Crystal Polymers.

Construction technologies derived from those used for the Filante SLR and the Wilier 0 SLR, models renowned for their excellent riding quality as acknowledged by the most demanding professional riders.

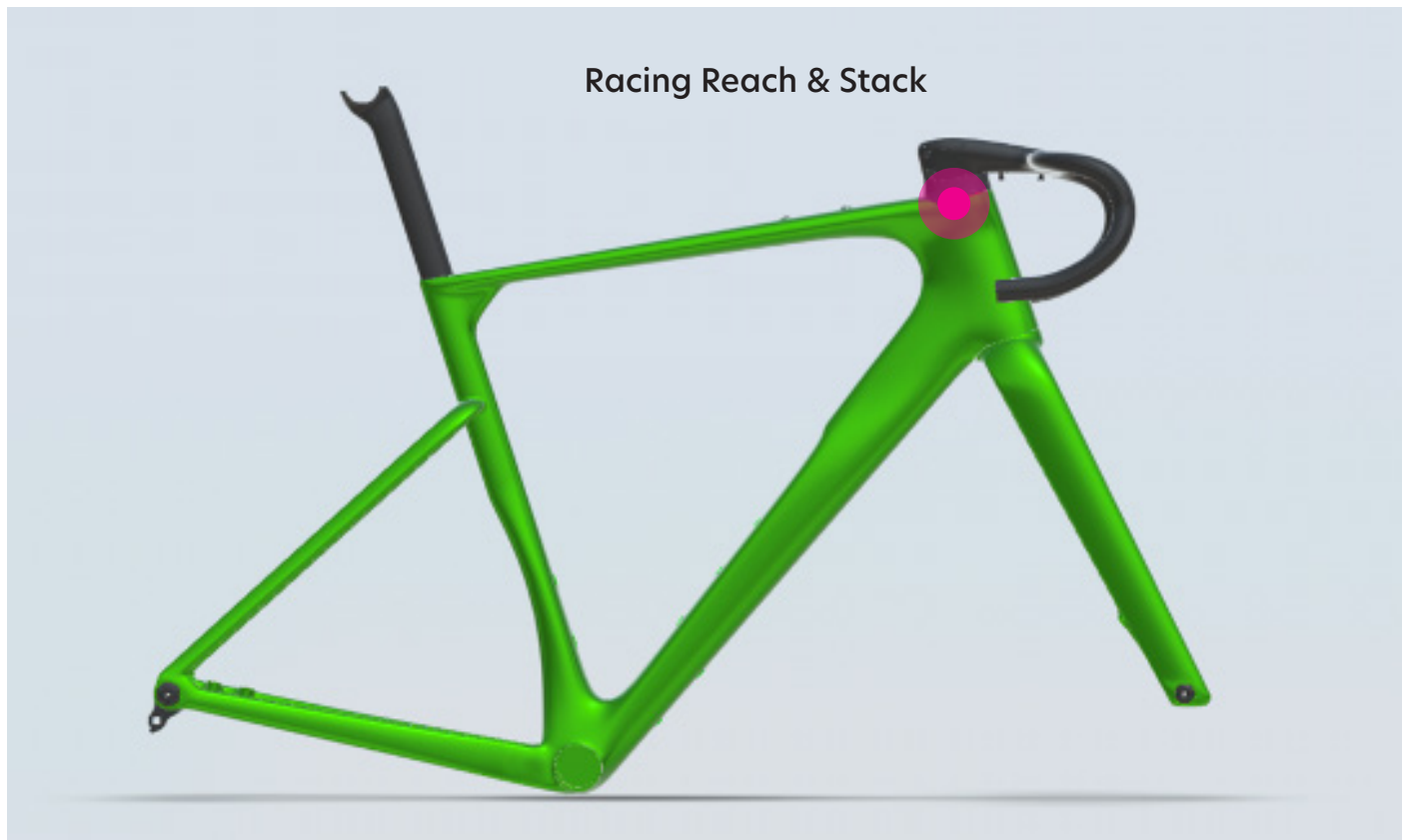
In this case, however, we added reinforcements to the area of the rear triangle chainstays. This makes the bike just as responsive despite the stays being longer than those on our road models.



BALANCED RACING GEOMETRIES

To achieve a frame with balanced racing geometries for off-road usage, we started with top-tier road racing models and blended them with endurance and gravel inspired dimensions: all without compromising the performance-oriented goal we set at the very start of the design process.

A slightly higher stack and a somewhat shorter reach compared to a pure racing bike, combined with the available carbon monocoque handlebars, become the perfect balance between high performance and comfort.

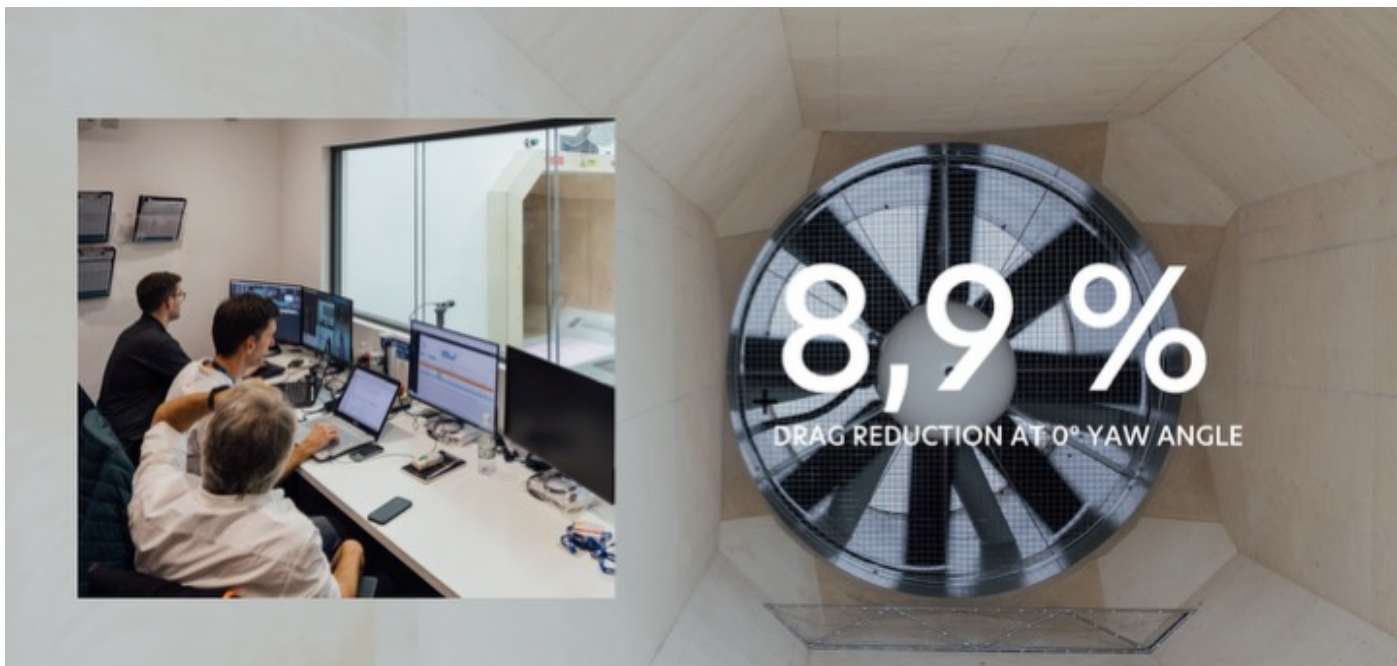


AERODYNAMIC

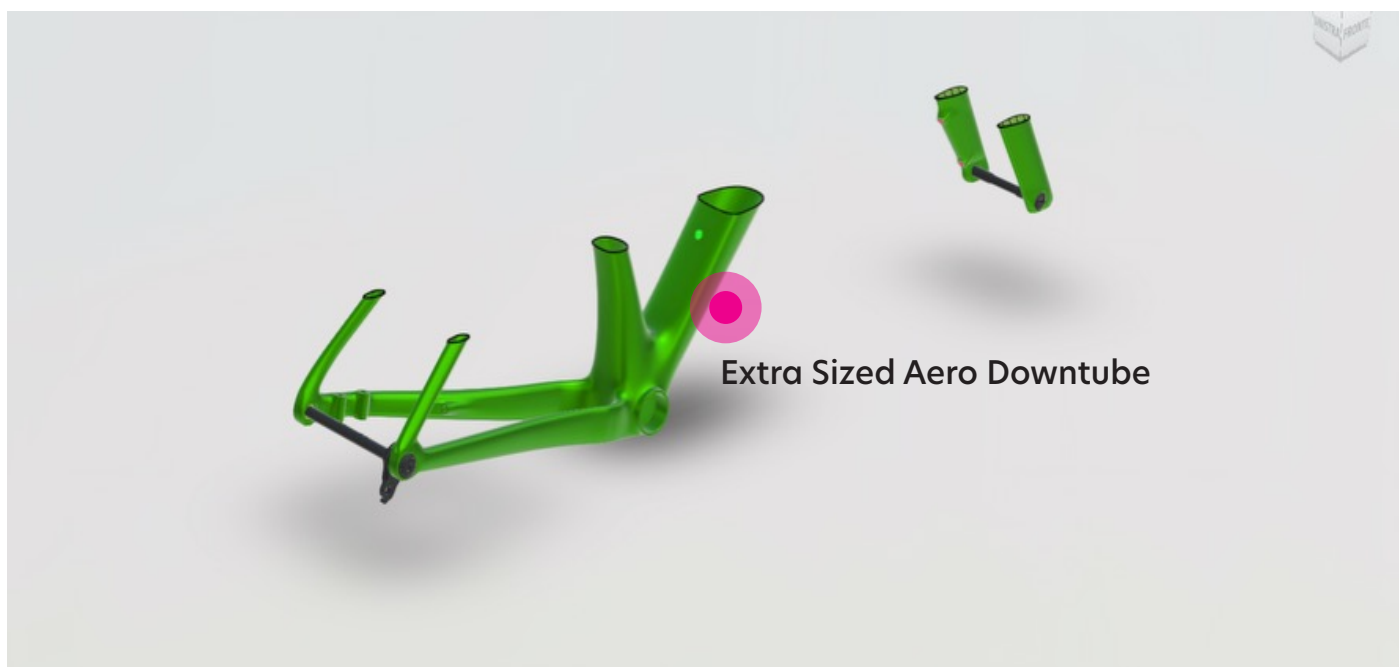
One of the key focuses of this project was aerodynamic efficiency. In modern gravel, speed has become essential, which is why we concentrated on this aspect when developing the new Rave.

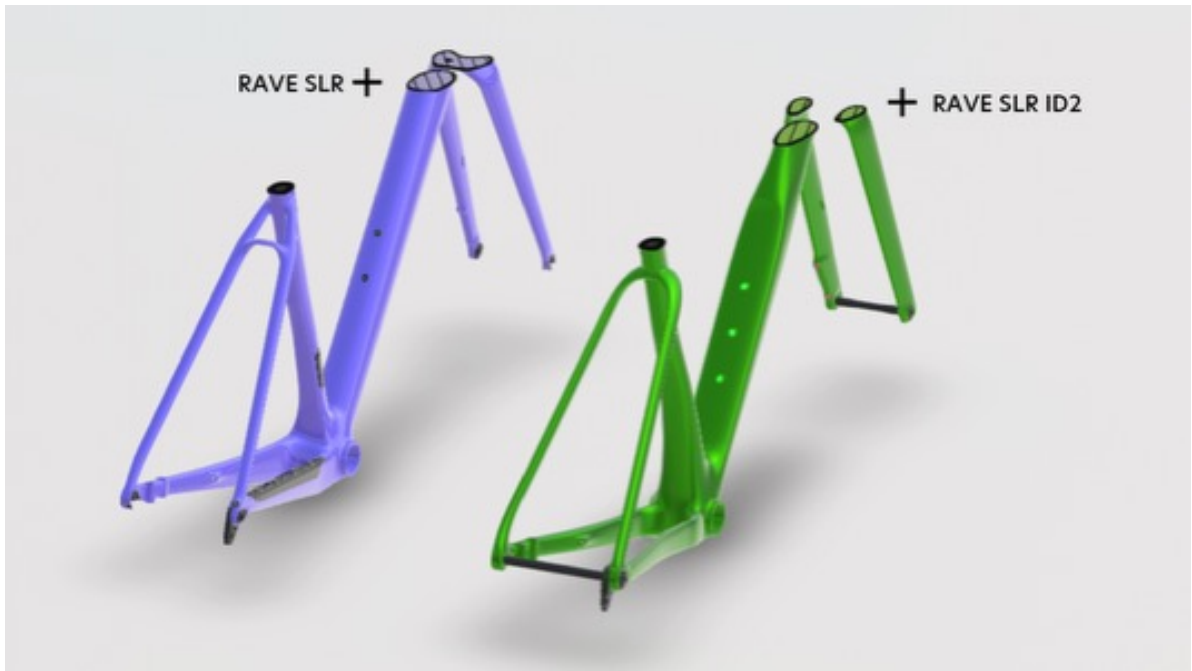
The result we achieved is a frame that, with the same settings and tyres, **delivers an 8.9% reduction in aerodynamic drag** compared to the previous Rave model.





This excellent result was reached through a series of wind tunnel tests, which led to the development of highly aerodynamic yet oversized tube sections.





TECHNICAL SPECIFICATIONS

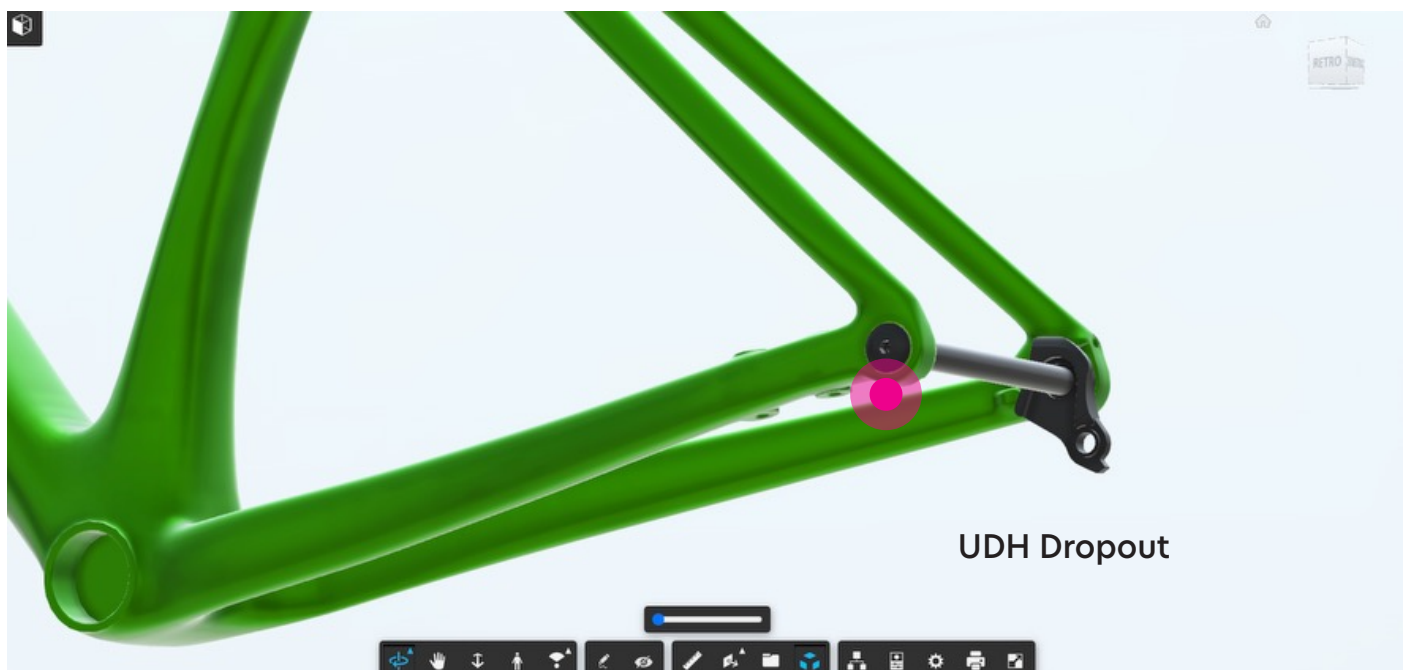
In addition to being lightweight, the F-Bar monocoque handlebars available in the Rave ID2, house the brake and controls cables, routing them inside the frame.

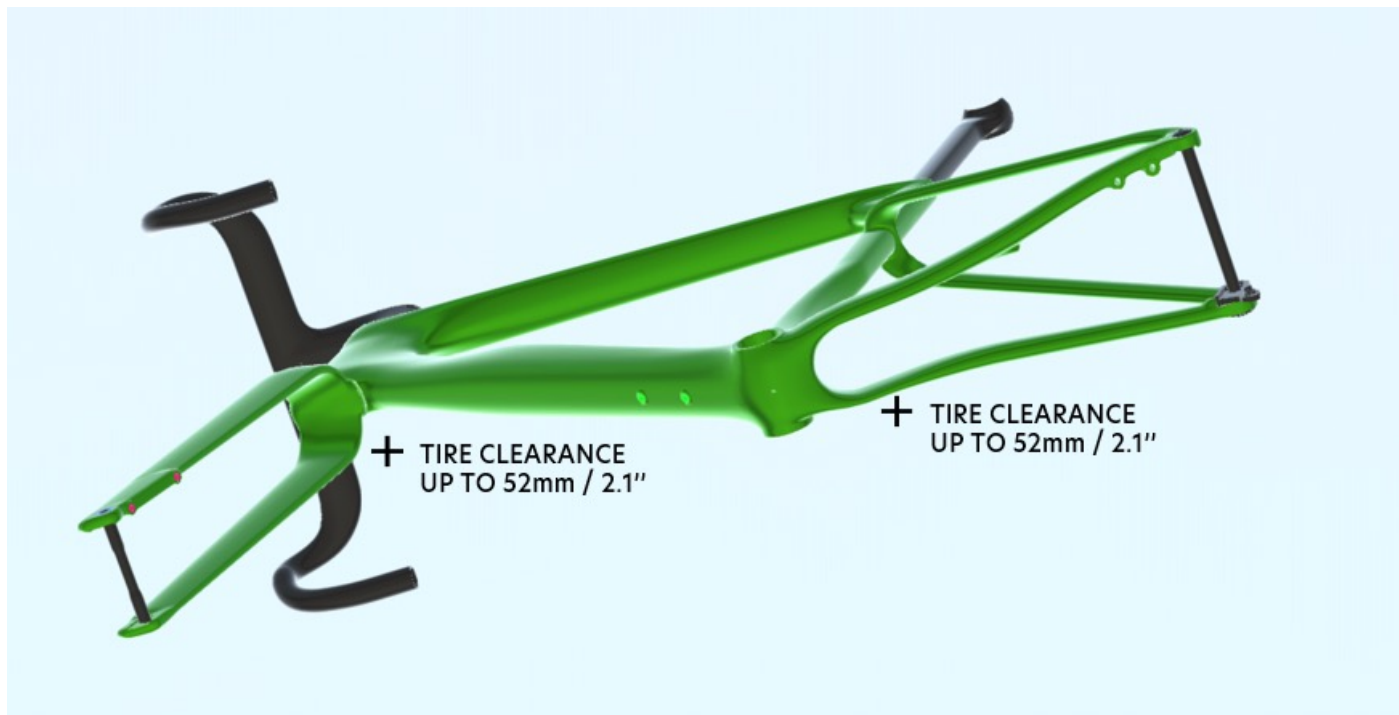
The handlebar and stem combo features an essential design, with sinuous and rounded lines to ensure the best possible ergonomic grip and provide the Rave ID2 with the elegance of Wilier Triestina's high-end products.

This model is compatible with all carbon monocoque handlebars offered by Wilier Triestina, allowing for any possible cockpit configuration.

The frame is designed only for mounting 1X groupsets. This choice was driven by the desire to allow for the use of generously sized tyres (maximum 2.1" tolerance) while maintaining a short and responsive rear triangle, sacrificing the possibility of mounting 2X transmissions.

The rear dropout is UDH type, optimised for mounting the most modern gravel groupsets available on the market.



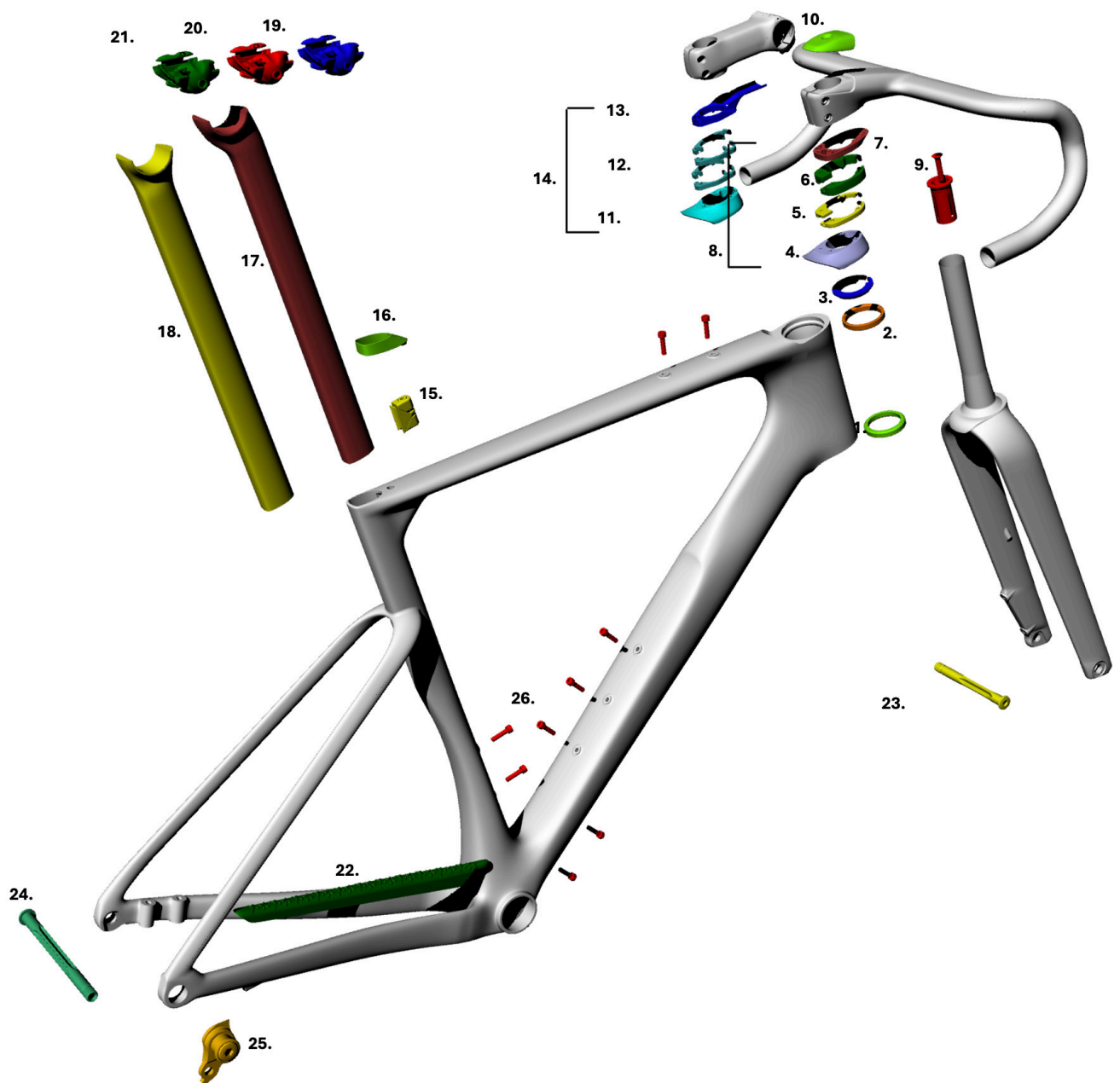


FRAME AND TECHNICAL SPECS DETAILS

HEADTUBE	1"1/4-1"1/4
UPPER BEARING	WTP-BEARING-SS 39 X 46.9
LOWER BEARING	FSA MR137
FRONT FORK O.L.D.	100 mm
REAR STAYS O.L.D.	142 mm
BB SHELL	SHIMANO PRESS FIT (86.5 wide x 41 diameter)
SEAT POST	WILIER SEATPOST 0/-15
SEATPOST COLLAR	INTEGRATED WILIER EXPANDER
REAR DERAILLEUR TYPE	UDH
FRONT DERAILLEUR TYPE	NOT COMPATIBLE

SPARE PARTS

N°	CODE	Description
1	MR137	FSA BEARING 1-1/4"
2	WTP-BEARING-SSLIM	BEARING SUPERSLIM 39 X 46.9 X 7 SSLIM
3	WTP-2SCOMPRING	COMPOSITE COMPRESSION RING
4	WTP-ID2-TCOV2	TOP COVER ID2-FBAR
5	WTP-ZSPACER5	SPACER 5MM (DX+SX)
6	WTP-ZSPACER10	SPACER 10MM (DX+SX)
7	WOTS	TOP SPACER
8	WOKITS2	SPACERS KIT ID2-FBAR
9	EXROUFK	ROUND FORK EXPANDER
10	WFBTC	TOP CAP FILANTE BAR TOP CAP WFBTC
11	TBD (WTP-ID2-TCOV3)	TOP COVER ID2-STEMMA S2
12	33000816019	RITCHEY HEADSET 5MM SPACER BLK
13	33000816018	RITCHEY HEADSET SPACER CGUIDE X80MM
	33000816017	RITCHEY HEADSET SPACER CGUIDE X90MM
	33000816016	RITCHEY HEADSET SPACER CGUIDE X100MM
	33000816015	RITCHEY HEADSET SPACER CGUIDE X110/120MM
14	AFT-KITID2STEMMA80	SPACERS KIT ID2 PER STEMMA 80AFT
	AFT-KITID2STEMMA90	SPACERS KIT ID2 PER STEMMA 90AFT
	AFT-KITID2STEMMA100	SPACERS KIT ID2 PER STEMMA 100AFT
	AFT-KITID2STEMMA110	SPACERS KIT ID2 PER STEMMA 110/120AFT
15	WTP-SPEXP	FILANTE SEATPOST EXPANDER
16	WTP-SPSHIELD-F	SEATPOST RUBBER SEAL FILANTE
17	AFT-STFILA-15	SEATPOST FILANTE -15 OFFSET
18	AFT-STFILA0	SEATPOST FILANTE ZERO OFFSET AFT
19	55055467006	RITCHEY CLAMP 7x7 ALU SEATPOST
20	55055467010	RITCHEY CLAMP 8X8.5 CARB.SEAT. AFT
21	55055467011	RITCHEY CLAMP 7X9.6 CARB. SEAT. AFT
22	WTP-AFPROT-GR	CHAIN STAY PROTECTOR+STICKER GRAVEL
23	QRPERFOB00000-1	MICHE FRONT AXLE M12X118 P.1
24	XQRPERR0B7100	MICHE REAR AXLE M12X1X171.5 UDH
25	UDH-SRAM	DROPOUT UDH SRAM
26	VIT POR	BOTTLE CAGE SCREW



FAQ

How much does the frame weigh?	The frame weighs 980g for a painted size M.
What transmissions can be installed on Rave SLR ID2?	Rave SLR ID2 is designed for competitive gravel use. For this reason, it can only be fitted with groupsets specifically designed for gravel, meaning exclusively 1X drivetrains. The bike is compatible with both electronic and mechanical disc brake systems.
What is the maximum clearance of the Rave SLR ID2?	The Rave SLR ID2 frame offers very generous clearance and can accommodate MTB tires up to 2.1" (53 mm).
What is the maximum crankset gear size that can be fitted on a Rave SLR ID2?	The maximum chainring size for a single crankset is 50T, for both SRAM and Shimano groupsets.
What type of stem / handlebar can I install on Rave SLR ID2?	The bike is equipped with the F Bar on top-end builds, and with the Stemma S2 on mid-range versions. However, by using the adapters provided by Wilier Triestina, it is also possible to install any other carbon or aluminum handlebars offered by the brand.
Do the integrated cables pass through the handlebar?	The cables are integrated inside the frame, running through the superthin bearing and inside the integrated handlebar.
Is the superthin™ bearing available as a spare part?	The upper superthin bearing is not normally available on the market but is a design owned by Wilier Triestina and will only be available at the Wilier Triestina authorized dealers.
Does Rave SLR ID2 require a dedicated seatpost?	Yes, the Rave SLR ID2 fits an exclusive Wilier Triestina aero seatpost.
How can I clean my Rave SLR ID2?	We recommend cleaning with water and a soft cloth or sponge. Please note that some cleaning agents can damage the finish on the Rave SLR ID2. We do not recommend the use of pressurized water or air when cleaning the Rave SLR ID2 frame.
What frame protectors are standard?	The seat stay is protected by a dedicated rubber chainstay protector with special reinforced thickness.

COLOR VARIANTS



V10 Pixel Green - Matt



V11 Glitch Black - Glossy

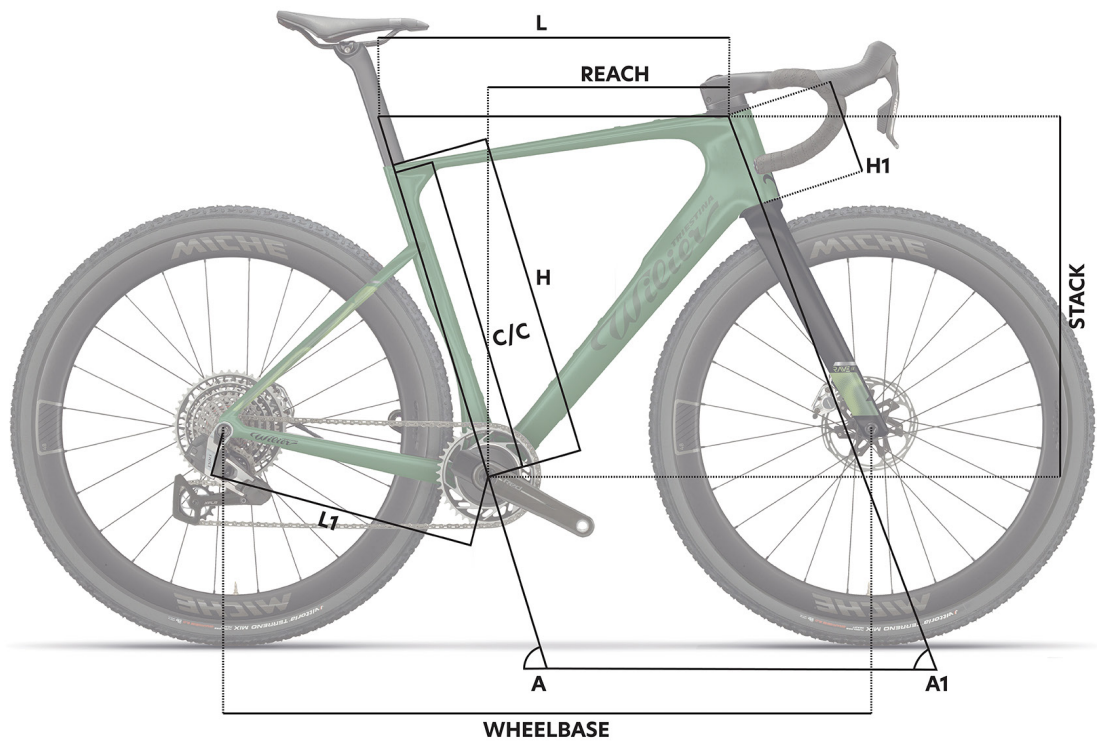


V12 Neon Purple - Glossy



V13 Byte Cream - Matt

GEOMETRIES AND SIZES



	XS	S	M	L	XL	XXL
C/C (cm)	43.2	46.2	48.2	50.2	52.2	54.2
L (cm)	51.6	53.2	54.9	56.6	58.3	59.7
H (cm)	45	48	50	52	54	56
A (°)	75.5	74.7	74	73.5	73	73
L1 (cm)	41.9	41.9	42.1	42.1	42.3	42.3
H1 (cm)	10.7	11.8	13.1	14.8	16.6	18.5
A1 (°)	69.2	70	70.8	71.2	71.6	72
Reach (mm)	375	381	387	393	400	408
Stack (mm)	532	546	561	579	597	617
Wheelbase (mm)	1014	1017	1022	1031	1042	1052

