



CRISTO 10 SL

TECHNICAL INTRODUCTION
REV.03

Cento10SL

Cento10SL perfectly matches the needs of sportsmans and active clients who are looking for a high level of aerodynamics and integration, at a fair price. Cento10SL even allows you to choose between mechanical or electronic groupsets with rim or disc brakes.



Cento10SL**TOTAL INTEGRATION**

Seamless cable integration with easy assembly and maintenance.

All cables (electronic and mechanical) run inside the frame. With the new Stemma SL stem, the bike can be assembled or maintained without having to remove the handlebar.

**STEERING QUALITY**

Cento10SL has the same technical and dynamic qualities as Cento10PRO. The new round fork steerer tube increases torsional stiffness and riding safety.

**DISC BRAKES / RIM BRAKES**

Cento10SL is available in both rim brake and disc brake versions. The standard bicycle is fitted with 25 mm tires. The frame can accommodate tires with a maximum of 28 mm of actual width.



CENTO 10 SL

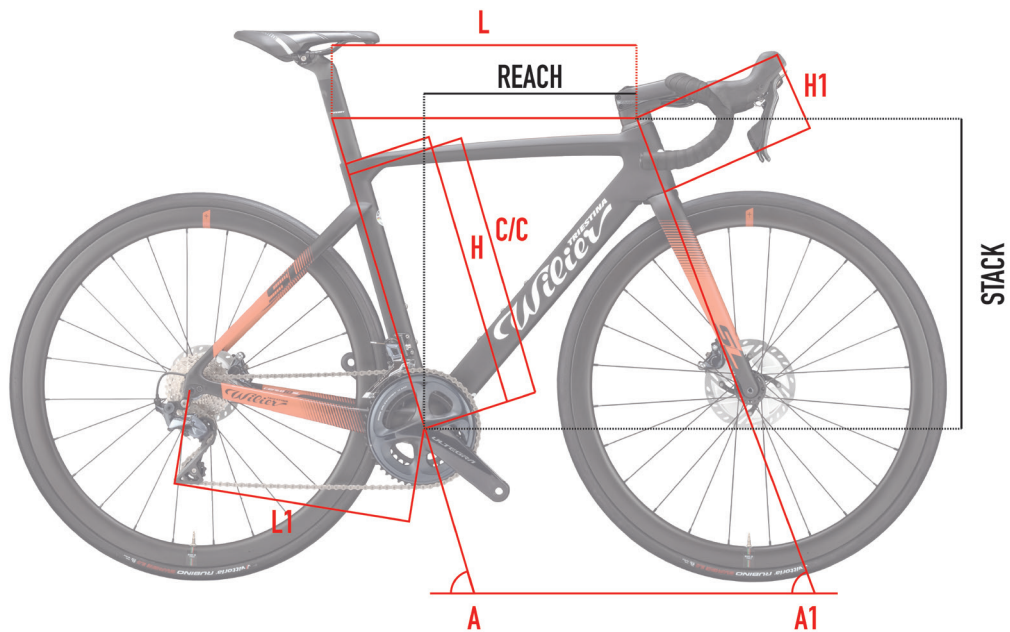
COLOR	BLACK / RED
FINISH	MATT
COLOR CODE	D14



COLOR	RED / BLACK
FINISH	GLOSSY
COLOR CODE	D15



GEOMETRIES AND SIZES DISC VERSION



DISC	C/C	L	H	A	H1	L1	A1	REACH	STACK	WHEELBASE
SIZE	[cm]	[cm]	[cm]	[°]	[mm]	[cm]	[°]	[mm]	[mm]	[mm]
XS	42	51,3	45	75	107	40,4	71,3	378	503	970
S	44	52,6	48	74,5	121	40,4	72	382	519	974
M	46	54,1	50	74	138	40,5	72,5	387	536	980
L	48	55,6	52	73,5	154	40,7	73	391	554	987
XL	50	57,1	54	73	173	40,9	73	396	571	999
XXL	52	58,7	56	72,5	190	41	73,5	400	589	1002

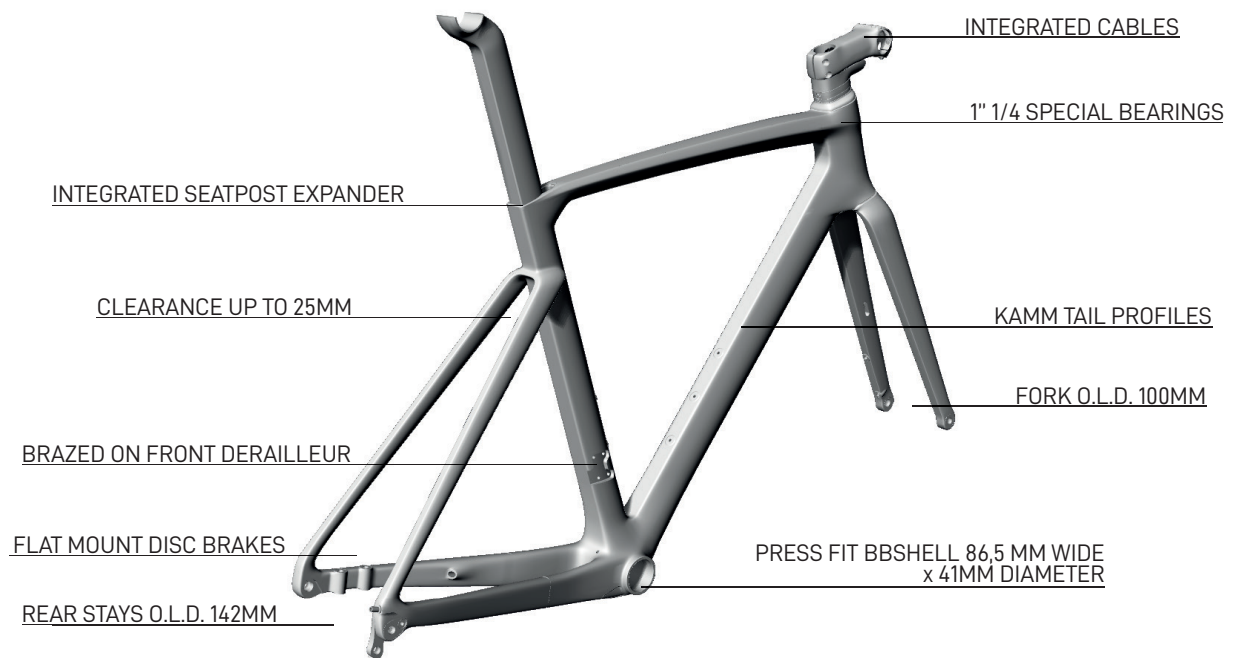


GEOMETRIES AND SIZES

RIM VERSION

RIM	C/C	L	H	A	H1	L1	A1	REACH	STACK	WHEELBASE
SIZE	[cm]	[cm]	[cm]	[°]	[mm]	[cm]	[°]	[mm]	[mm]	[mm]
XS	42	51,3	45	75	10,7	40,4	71,3	378	503	970
S	44	52,6	48	74,5	12,1	40,4	72	382	519	974
M	46	54,1	50	74	13,8	40,5	72,5	387	536	980
L	48	55,6	52	73,5	15,4	40,5	73	391	554	985
XL	50	57,1	54	73	17,3	40,7	73	396	571	997
XXL	52	58,7	56	72,5	19	40,7	73,5	400	589	1002

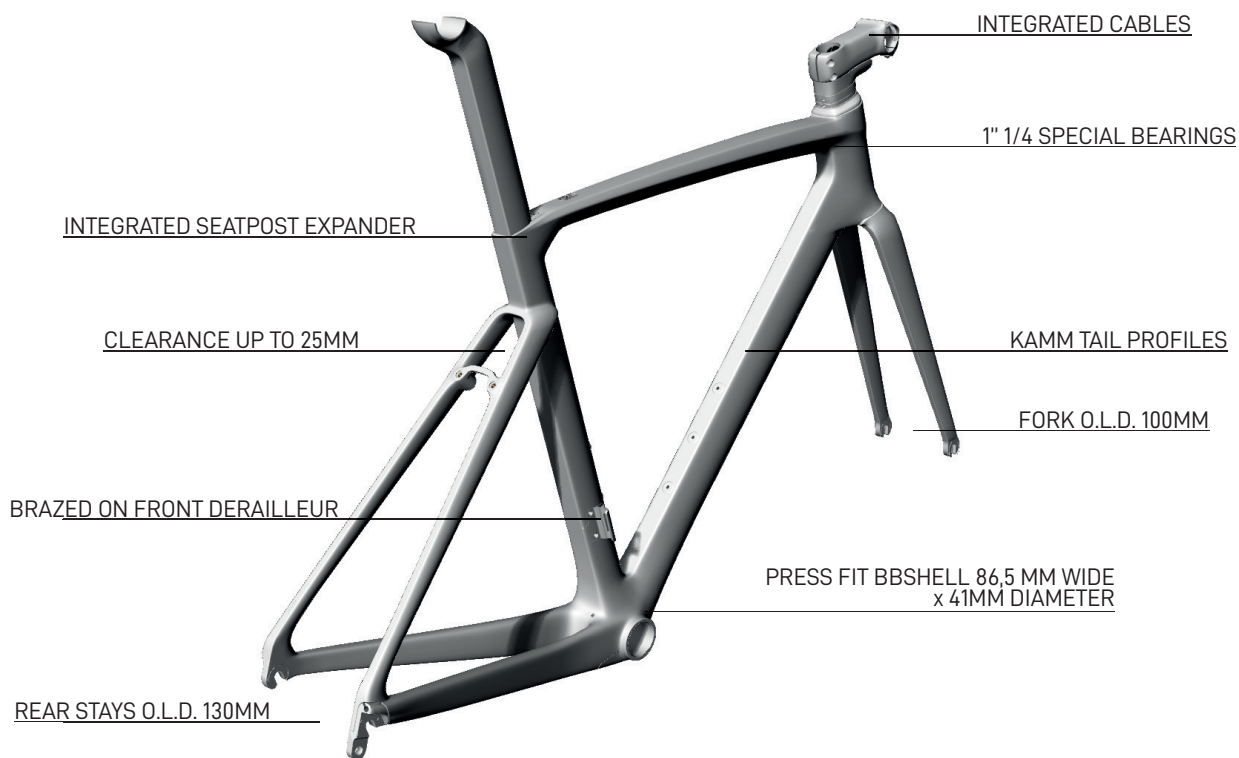
DISC VERSION KEYPOINTS



FRAME AND TECHNICAL SPECS DETAILS - DISC VERSION	
HEADTUBE	1"1/4 - 1"1/4
UPPER BEARING	WTP-BEARING-SS 39 X 46.9
LOWER BEARING	FSA MR137
FRONT FORK O.L.D.	100 mm - THRUE AXLE HEXAGON 12 X 125 passo 1.5
REAR STAYS O.L.D.	142 mm - THRUE AXLE HEXAGON 12 X 171 passo 1.5
BB SHELL	SHIMANO PRESS FIT (86.5 wide x 41 diameter)
SEAT POST	WILIER SEATPOST 0/-27mm (RITCHEY)
FRONT DERAILLEUR TYPE	BRAZED ON
SEATPOST EXPANDER	WTP110A-9



RIM VERSION KEYPOINTS

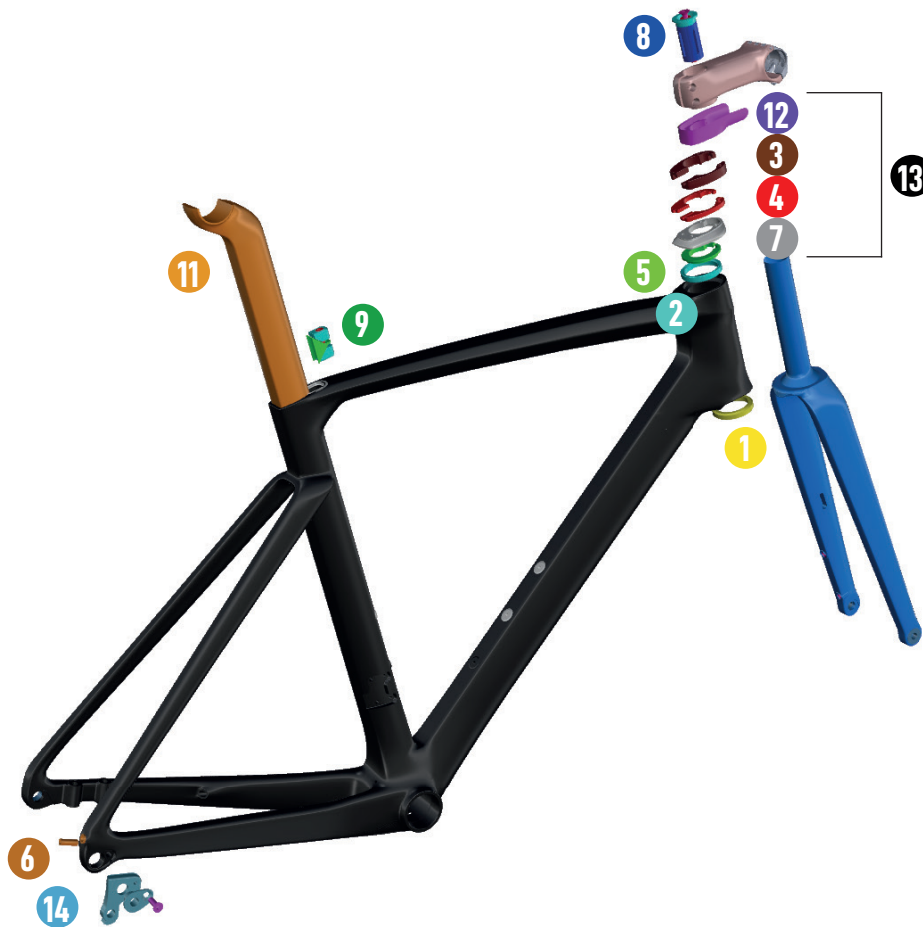


FRAME AND TECHNICAL SPECS DETAILS - RIM VERSION

HEADTUBE	1"1/4 - 1"1/4
UPPER BEARING	WTP-BEARING-SS 39 X 46.9
LOWER BEARING	FSA MR137
FRONT FORK O.L.D.	100 mm - STANDARD QR
REAR STAYS O.L.D.	130 mm - STANDARD QR
BB SHELL	SHIMANO PRESS FIT (86.5 wide x 41 diameter)
SEAT POST	WILIER SEATPOST 0/-27mm (RITCHEY)
FRONT DERAILLEUR TYPE	BRAZED ON
SEATPOST EXPANDER	WTP110A-9

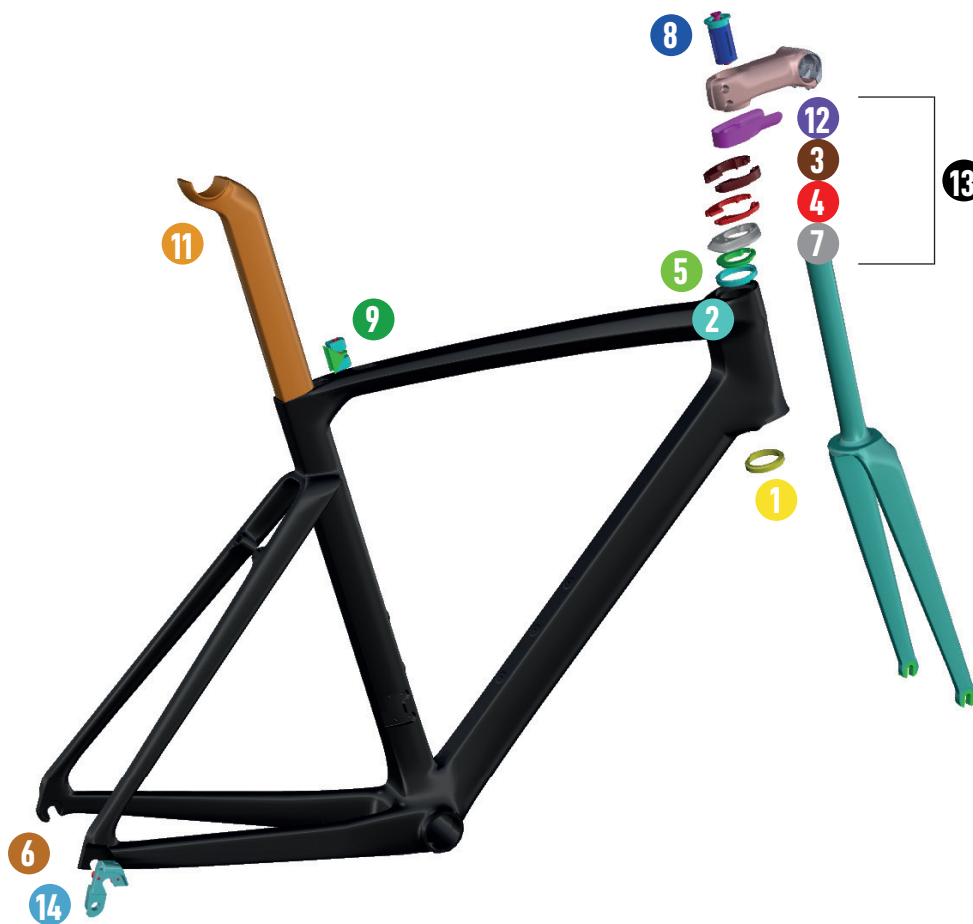


DISC VERSION SPARE PARTS



DISC VERSION SPARE PARTS		
1	MR137	FSA BEARING
2	WTP-BEARING-SSLIM	BEARING SUPER SLIM
3	WTP-ZSPACER10	SPACER 10MM FOR ZERO FRAME
4	WTP-ZSPACER5	SPACER 5MM FOR ZERO FRAME
5	WTP-COMPRING-SS	COMPRESSION RING PER BEARING SUPER SLIM
6	WTP-RUBRD	RUBBER PLUG – REAR STAY Di2
7	W0TC	TOP COVER
8	EXROUFG	EXPANDER FOR ORUNDED FORK
9	WTP110A-9	SEATPOST EXPANDER FOR CENTO10SL/PRO
10	HWT46N-SP-V2	0 OFFSET SEATPOST
11	HWT46N-SP	-27mm OFFSET SEATPOST
12	WTP-STEMCC	TOP COVER CABLE COLLECTOR
13	WKITCCOL	WTP-STEMCC + W0TC + WTP-ZSPACER5 x3 + WTP-ZSPACER10 x2
14	HGACCE59.5	DROPOUT CENTO10SL DISC
15	WTPTA12126-C	FRONT THRU AXLE 12X126
16	WTPTA12171-C	REAR THRU AXLE 12X171

RIM VERSION SPARE PARTS



RIM VERSION SPARE PARTS		
1	MR137	FSA BEARING
2	WTP-BEARING-SSLIM	BEARING SUPER SLIM
3	WTP-ZSPACER10	SPACER 10MM FOR ZERO FRAME
4	WTP-ZSPACER5	SPACER 5MM FOR ZERO FRAME
5	WTP-COMPRING-SS	COMPRESSION RING PER BEARING SUPER SLIM
6	WTP-RUBRD	RUBBER PLUG – REAR STAY Di2
7	W0TC	TOP COVER
8	EXROU FK	EXPANDER FOR ROUNDED FORK
9	WTP110A-9	SEATPOST EXPANDER FOR CENTO10SL/PRO
10	HWT46N-SP-V2	0 OFFSET SEATPOST
11	HWT46N-SP	-27mm OFFSET SEATPOST
12	WTP-STEMCC	TOP COVER CABLE COLLECTOR
13	WKITCCOL	WTP-STEMCC + W0TC + WTP-ZSPACER5 x3 + WTP-ZSPACER10 x2
14	WTP-DR10SL	DROPOUT CENTO10SL RIM

FAQ

How much does the frame weigh?

The frame weighs 1190 grams for a painted size M.

Has the metal plate on the down tube been removed?

Yes. By eliminating holes and hollows from the down tube we can handle carbon fibres more evenly. This solution increases torsional stiffness and riding safety.

Without the plate on the down tube, how are the shift and derailleur cables blocked inside the frame?

The sheath is no longer interrupted as on Cento10PRO but is entirely inside the frame. The sheath is coated with a special noise-resistant membrane.

Do the integrated cables pass through the handlebar?

The cables are integrated inside the frame, running through the superthin bearings but not inside the handlebar and the stem. This allows quick and economical maintenance and/or part replacement.

Is the superthin™ bearing available as a spare part?

Yes. The upper superthin bearing is not normally available on the market but is a design owned by Wilier Triestina and will only be available in B2B in the spare parts section.

What are the sizes of the thru axle system in the disc version?

The sizes are compatible with the axles used up to now on Cento10PRO, i.e. 12x125 mm front axle and 12x171 mm rear axle.

What tires can I install on Cento10SL?

The standard bicycle is fitted with 25 mm tires. The frame can accommodate tires with a maximum of 28 mm of actual width.

Can I install triathlon accessories?

Yes. Triathlon armrests can be installed on the Barra SL handlebar because it has a 31.8 mm round diameter.

Can I install other types of handlebar stems on the Cento10SL?

No. The Stemma SL handlebar stem must be used. It might be possible to switch out the handlebar for other 31.8 mm diameter products or other integrated / semi-integrated Wilier Triestina handlebars purchased in the aftermarket (Filante Bar, O-Bar, J-Bar and Stemma)



