



RAVE SLR

TECHNICAL INTRODUCTION
REV.01

RAVE^{SLR}

2

WILIERPEDIA 2022

Travelling new roads is not just an attitude. It can also become the target for someone who has been making bicycles for over 116 years.

With Rave SLR we have set our sights on new horizons, creating a product with two separate souls, perfect for all-road, perfect for gravel, but the same incredible racing inclination.

Rave SLR will be a new cycling experience, unexpected for many.



ROAD or GRAVEL SETUP

Both Rave SLR colours can be outfitted with top-end road accessories (new Shimano Dura Ace Di2, new Shimano Ultegra Di2, Sram Force AXS) or high range gravel accessories (Campagnolo Ekar, Shimano GRX or the new Sram Force AXS XPLR) with road or gravel tyres up to 42mm.



LIGHTWEIGHT

To create a light frame, we used the same carbon mix found in the Filante SLR and the Wilier 0 SLR, just to give an idea.



RESPONSIVE

To create a reactive frame, we've channelled all the experience gained in the use of technopolymers, mixing carbon with special viscoelastic fibres such as Liquid Crystal Polymers. Construction technologies borrowed from those used for the Filante SLR and the Wilier 0 SLR, products that offer an excellent riding quality recognised by the most demanding professional riders.



RAVE^{SLR}

HIGH PERFORMING

Performance has always been our fixation. And the genesis of the Rave SLR is no different. If we translate performance into concrete aspects, it's about a frame that is light, responsive (stiff where necessary) and features racing geometries.



BALANCED RACING GEOMETRIES

To create a frame with balanced racing geometries, we started with top range road racing references and mixed them with frame parts of endurance and gravel origin: all without distorting the performance target that we set for ourselves at the start of the design phase. A slightly higher stack and a somewhat shorter reach compared to a pure competition bike, combined with the available carbon monocoque handlebars, become the perfect synthesis between high performance and comfort.



HANDLEBAR AND INTEGRATED CABLES

In addition to being lightweight, the 0-Bar and J-Bar monocoque handlebars available in the Rave SLR, house the brake and controls cables, routing them inside the frame. The handlebar and stem combo features an essential design, with sinuous and rounded lines to guarantee the best possible ergonomic grip and provide the Rave SLR with the elegance of Wilier Triestina's high-end products.





EASY-FIT SPACERS

The spacers between the frame head tube and the handlebar are made of a high-rigidity composite material, with a special cavity for routing the cables. They consist of two parts for quick assembly and disassembly, without interfering with the cables that run from the handlebar to the frame.

RIAVE^{SLR}

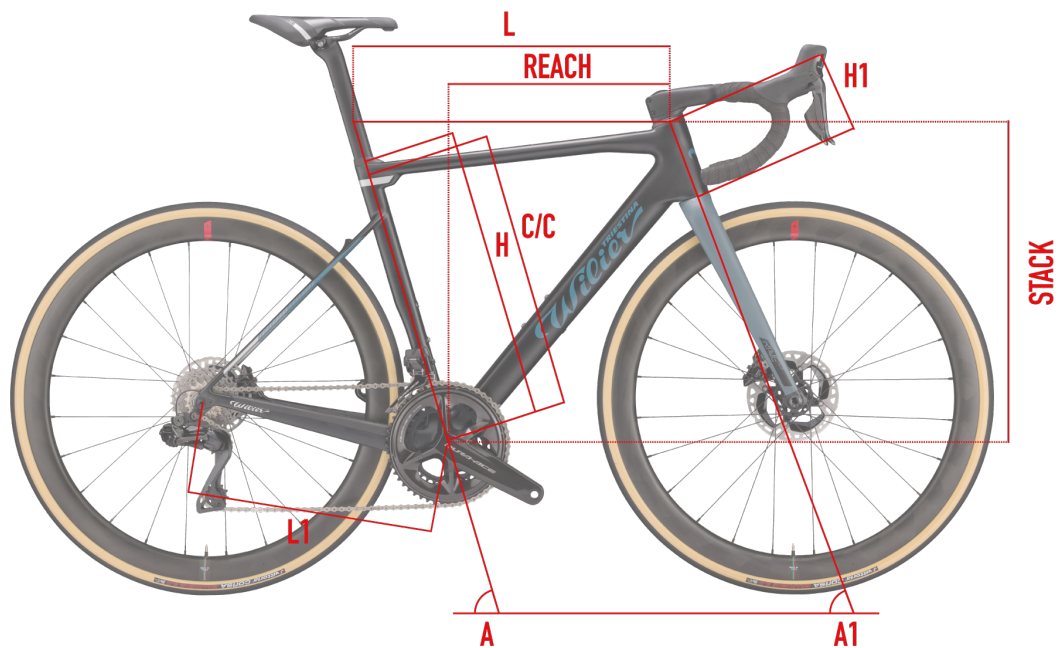
COLOR	BLACK/GREY
FINISH	MATT
COLOR CODE	V1



COLOR	SAND/GREEN
FINISH	MATT
COLOR CODE	V2



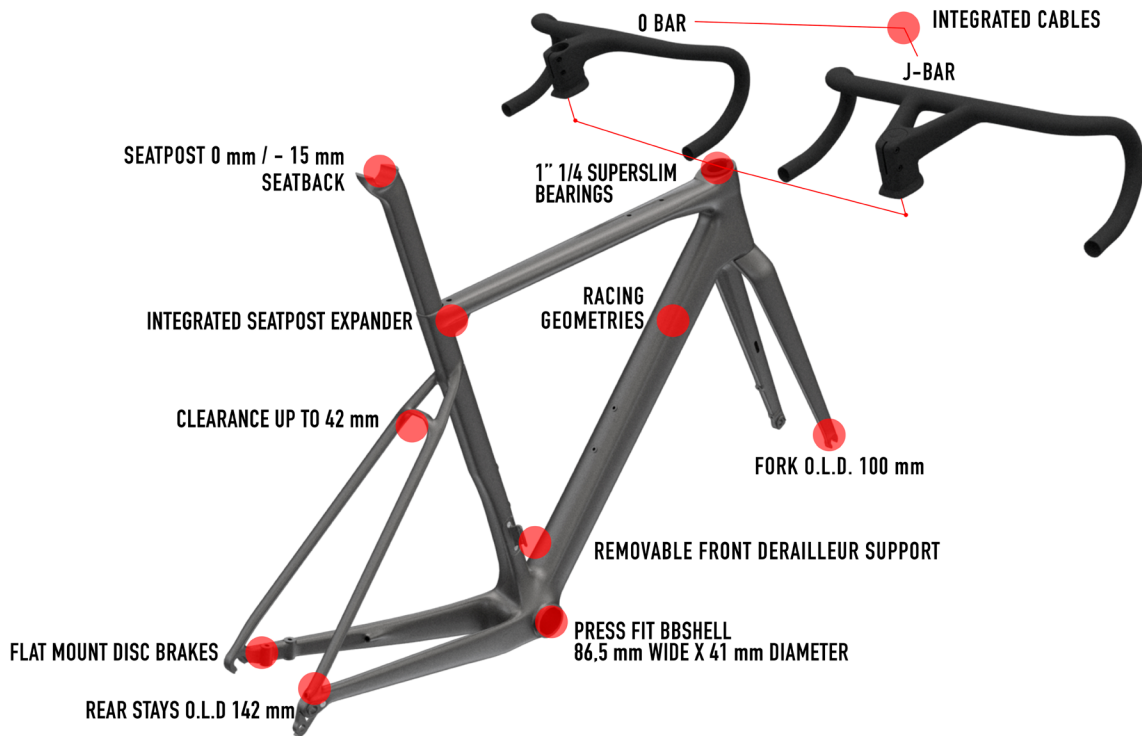
GEOMETRIES AND SIZES



	H	C/C	L	A	H1	L1	A1	REACH	STACK	WB
SIZE	[cm]	[cm]	[cm]	[°]	[cm]	[cm]	[°]	[mm]	[mm]	[mm]
XS	45	43,2	51	75	9,8	42,1	70	370	513	997
S	48	46,2	52,7	74,5	11,8	42,2	70	377	532	1012
M	50	48,2	54,5	74	13,4	42,3	71	384	551	1017
L	52	50,2	56,1	73,5	15,4	42,3	71	391	570	1031
XL	54	52,2	57,9	73	17,2	42,5	71,5	398	589	1041
XXL	56	54,2	59,7	72,5	18,9	42,7	72	405	608	1051

RIAVE^{SLR}

KEYPOINTS

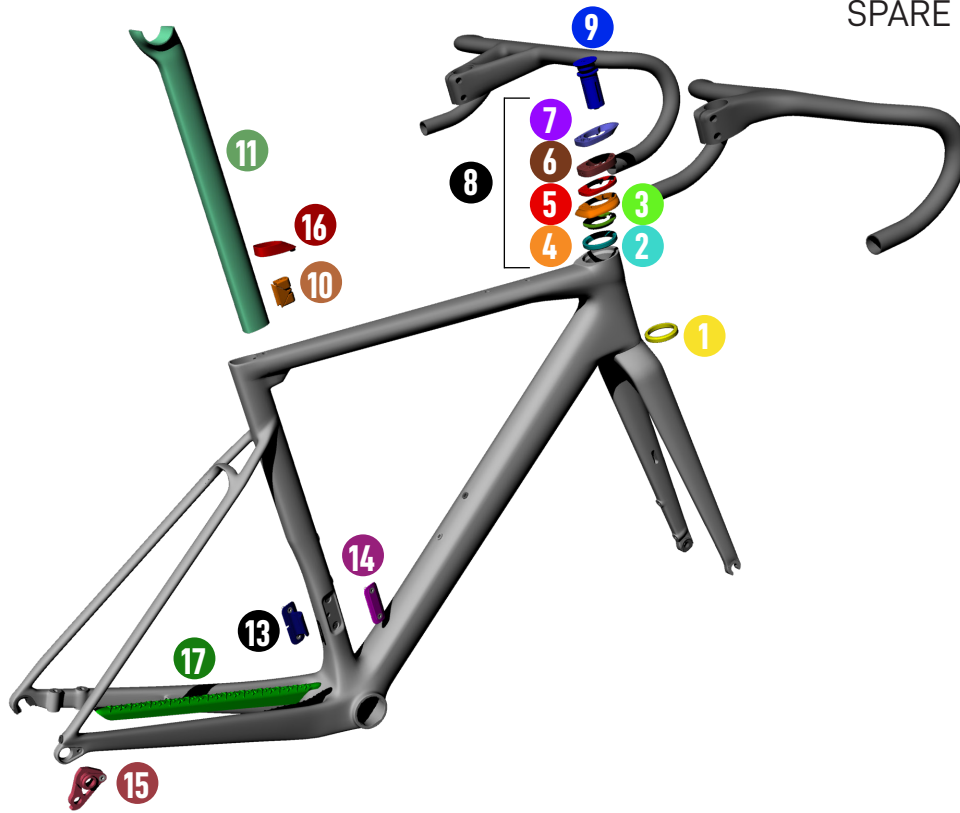


FRAME AND TECHNICAL SPECS DETAILS

HEADTUBE	1"1/4-1"1/4
UPPER BEARING	WTP-BEARING-SS 39 X 46.9
LOWER BEARING	FSA MR137
FRONT FORK O.L.D.	100 mm
REAR STAYS O.L.D.	142 mm
BB SHELL	SHIMANO PRESS FIT (86.5 wide x 41 diameter)
SEAT POST	WILIER SEATPOST 0/-15
FRONT DERAILLEUR TYPE	REMOVABLE FRONT DERAILLEUR SUPPORT
SEATPOST COLLAR	WTP-SPEXP

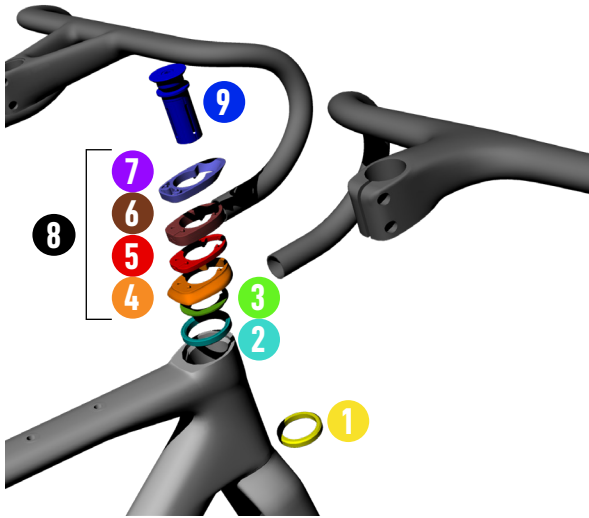


SPARE PARTS

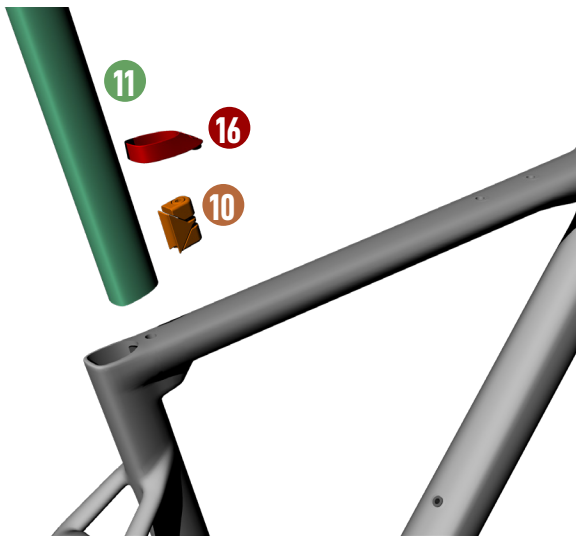


DISC/RIM VERSION SPARE PARTS		
1	MR137	FSA BEARING 1-1/4"
2	WTP-BEARING-SSLIM	WILIER BEARING SUPERSLIM 39 X 46.9 X 7
3	WTP-COMPRING-SS	WILIER FRAME RING SUPERSLIM
4	W0TC	TOP COVER
5	WTP-ZSPACER5	SPACER 5MM
6	WTP-ZSPACER10	SPACER 10MM
7	W0TS	TOP SPACER
8	W0KITS	SPACERS KIT
9	EXROUFG	ROUND FORK EXPANDER
10	WTP-SPEXP	SEATPOST EXPANDER
11	STFILA-15	SEATPOST -15 OFFSET
12	STFILA0	SEATPOST 0 OFFSE T
13	WTP-REMGD	REMOVABLE FRONT DERAILLEUR SUPPORT
14	FDCOV1X	INTERCHANGEABLE FD COVER
15	WORDREINF	DROPOUT
16	WTP-SPSHIELD-F	SEATPOST RUBBER SEAL
17	WTP-AFFPROT-GR	CHAIN STAY PROTECTOR+STICKER GRAVEL
18	LV2720100	MAVIC SPEED RELEASE 12X100
19	LV2720200	MAVIC SPEED RELEASE 12X142
20	LV3300100	MAVIC SPEED RELEASE 12X100 BOLT-ON AXL F
21	LV3300200	MAVIC SPEED RELEASE 12X142 BOLT-ON AXL R

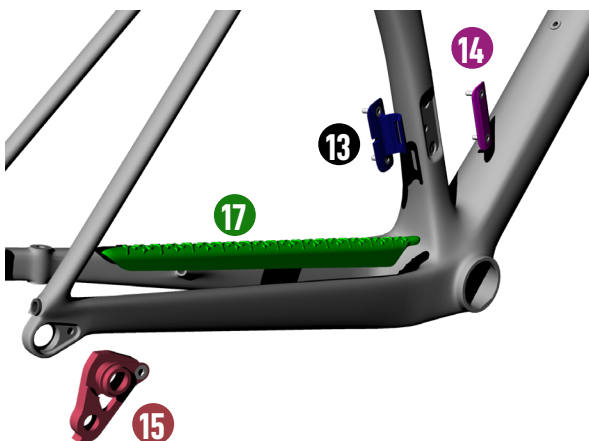




SPARE PARTS		
1	MR137	FSA BEARING 1-1/4"
2	WTP-BEARING-SSLIM	BEARING SUPERSLIM 39 X 46.9 X 7
3	WTP-COMPRING-SS	FRAME RING SUPERSLIM
4	W0TC	TOP COVER
5	WTP-ZSPACER5	SPACER 5MM
6	WTP-ZSPACER10	SPACER 10MM
7	W0TS	TOP SPACER
8	W0KITS	SPACERS KIT
9	EXROUFK	ROUND FORK EXPANDER



SPARE PARTS		
10	WTP-SPEXP	SEATPOST EXPANDER
11	STFILA-15	SEATPOST -15 OFFSET
16	WTP-SPSHIELD-F	SEATPOST RUBBER SEAL



SPARE PARTS		
13	WTP-REMFD	REMOVABLE FRONT DER. SUPPORT
14	FDCOV1X	INTERCHANGEABLE FD COVER
15	WORDREINF	DROPOUT
17	WTP-AFPROT-GR	CHAIN STAY PROTECTOR GRAVEL

FAQ

How much does the frame weigh?	The frame weighs 950g for a painted size M.
What transmissions can be installed on the Rave SLR?	Rave SLR is intended for competition gravel. This is why it can mount groups designed for use on both gravel and road as well. The bike can be fitted with electronic/mechanical disc brake systems.
What is the maximum tyre width that can be fitted on a Rave SLR?	For road setups, the maximum width is 36mm. For gravel setups, the maximum width is 42mm.
What is the maximum crankset gear size that can be fitted on a Rave SLR?	The maximum size of the double crankset gear is 52T for Shimano groupsets. For all other groupsets, the maximum size is 50T.
What type of stem/handlebar can I install on Rave SLR?	The standard bike features a 0-Bar for the road configuration and a J-Bar for the gravel version. The use of Wilier Triestina carbon spacers also makes it possible to switch to a Filante Bar and a Stemma SL.
Do the integrated cables pass through the handlebar?	The cables are integrated inside the frame, running through the superthin bearing and inside the integrated handlebar.
Is the superthin™ bearing available as a spare part?	Yes. The upper superthin bearing is not normally available on the market but is a design owned by Wilier Triestina and will only be available at the Wilier Triestina authorized dealers.
Does the Rave SLR require a dedicated seatpost?	Yes, Rave SLR fits an exclusive design Wilier Triestina seatpost.
What are the sizes of the thru axle system?	The frame design is Speed Release. The bike comes standard with a traditional full pull-out axle. Mavic Speed Release thru axles can be purchased through the Wilier Triestina authorized dealers.
How can I clean my Rave SLR?	We recommend cleaning with water and a soft cloth or sponge. Please note that some cleaning agents can damage the finish on the Rave SLR. We do not recommend the use of pressurized water or air when cleaning the Rave SLR frame.
What frame protectors are standard?	The seat stay is protected by a dedicated rubber chainstay protector with special reinforced thickness.



