

JENNA

TECHNICAL INTRODUCTION
REV.03

JENA

2

WILIERPEDIA 2024

GRAVEL COLLECTION

Jena is a new carbon gravel bike, designed to give you more freedom of choice when you go out for a ride. Jena was designed to satisfy any of your needs, whether it is performance on dirt roads and single track, or adventure, exploration, and bikepacking.

Jena is a light, reactive, and easy-to-handle bike with racing-comfort geometries, and able to adapt to the multiple uses required of a gravel bike.



TECHNICAL SPECS

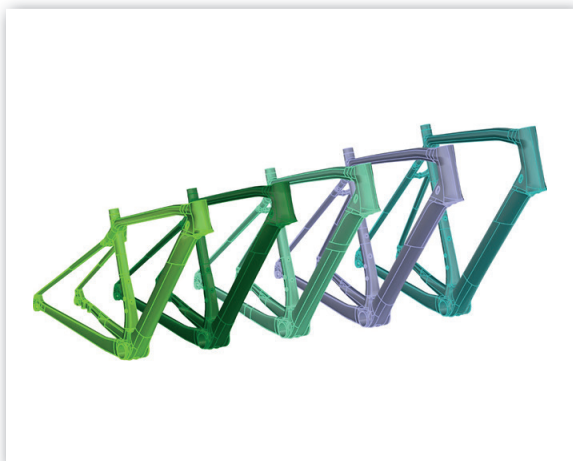
Jena is available only with flat mount disc brake. The standard installed rotor has a 160 mm diameter. The wheel through pins have a 12mm diameter, 100mm long on the front fork and 142mm on the rear one. Even if the aerodynamics on gravel has less importance, an aerodynamic oblique tube was developed for Jena. This gives the classic truncated tail shape of Wilier's aerodynamic frames.

The derailleur support can be removed in case of single ring group, which is a transmission widely used by gravel enthusiasts. In any moment, you can choose a solution with double or single crankset, without compromising on the bike look.



RACING COMFORT GEOMETRIES

Jena's 60TON monocoque carbon frame comes in 5 sizes (from XS to XL) with geometries that allow a high level of comfort, without sacrificing reactivity and performance, which is very close to the one of Wilier's racing bikes. The head tube, with a more open angle, ensures riding quality and stability also on the most difficult tracks. On the other hand, the rear triangle was designed to have a more distinct response to vertical stress, absorbing thus great part of the vibrations generated by the ground imperfections.



USABILITY

There are no limits on Jena usability and to the available configurations. The span between frame / fork and wheels allows you to install generous tyres on 28" wheels or MTB wheels with a 650B diameter. With 28" wheels you can install tyres up to 44 mm wide, whereas in case of 650B MTB wheels, you can even install 48 mm wide tyres.

There are numerous available supports that allow the installation of bottle holders, bags, carriers or mudguards. On the front fork, for example, you can install two bottle holders or one lowrider carrier for bags.



JENA

COLOR	PATTERNED BRONZE
FINISH	GLOSSY
COLOR CODE	J18



COLOR	OLIVE GREEN
FINISH	GLOSSY
COLOR CODE	J19



JENA

COLOR	SMOKEY
FINISH	MATT
COLOR CODE	J20



COLOR	DUSTIN KLEIN UNICO JUNGLE
FINISH	MATT
COLOR CODE	JU1



JENA

COLOR	DUSTIN KLEIN UNICO TUNDRA
FINISH	MATT
COLOR CODE	JU2





SIZES AND GEOMETRIES

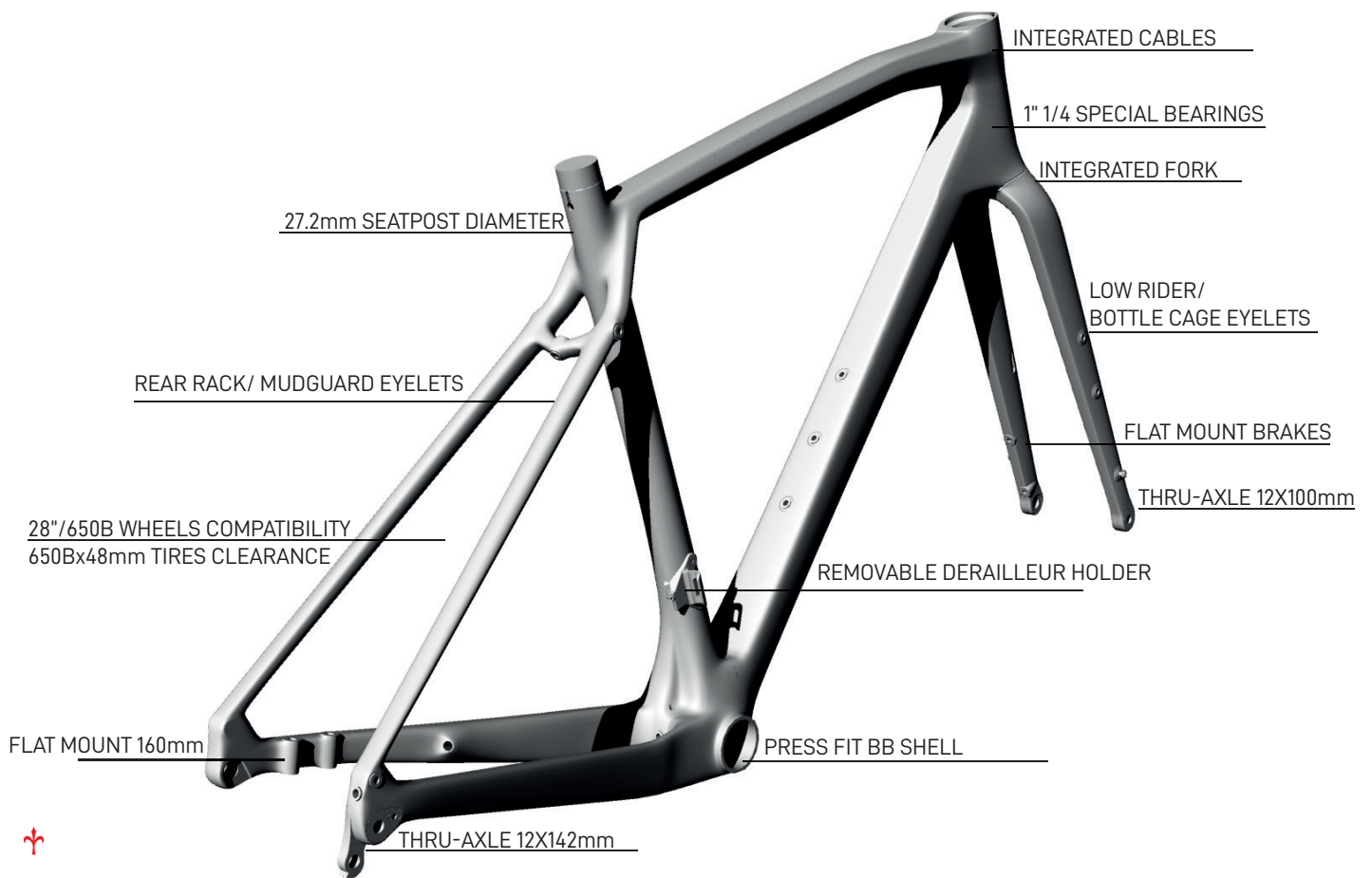


SIZE	C/C	L	H	A	H1	L1	A1	REACH	STACK	WHEELBASE
	(cm)	(cm)	(cm)	(°)	(cm)	(cm)	(°)	(cm)	(cm)	(cm)
XS	38	50.8	44	75	10	42.3	70	36.3	53.1	99.5
S	41	53.1	47	74.3	12.5	42.3	70.5	37.3	55.6	100.9
M	44	55.4	50	73.7	15	42.3	71	38.2	58.2	102.3
L	47	57.7	53	73.1	17.5	42.3	71.5	39.2	60.7	103.6
XL	51	60.0	57	72.6	20	42.3	72	40.1	63.3	104.8



JENA

FRAME KEYPOINTS



FAQ

What road surfaces can the Jena be used on?

Jena is a gravel bike from Wilier Triestina. It is designed to be ridden on everything from tarmac to gravel tracks and offroad trails dependant on wheel and tyre choice.

The Jena is available in how many frame sizes?

The Jena is available in 5 frame sizes from XS to XL.

What is the frame construction?

The Jena frame is constructed from 60Ton carbon fibre, like our top-end road bikes. The size M painted frame weighs 995g.

What size wheels can be used in the Jena frame?

The Jena can be used with both 700Cc road wheels or 650b MTB wheels. With 700c wheels, a tyre of up to 44mm wide can be fitted, whilst with 650b wheels the frame has clearnces for 48mm tyres.

What brake systems can be used?

The Jena can be used with flat mount brake systems with a maximum rotor diameter of 160mm

What Chainrings can be fitted?

The Jena can be used with single chainring groupsets. The frame is fitted with a removable front derraileur mount so can also be used with double chainring systems. This gives the bike maximum versatility without compromising the aesthetics of the bike if the popular 1X systems are fitted.

Is it possible to fit mudguards?

Yes. Jena has eyelets for the installation of mudguards front and rear, as well as rack mounts. The frame also has eyelets for double bottle cages on the main triangle, as well as bottle/cargo cage mounts on both fork legs.

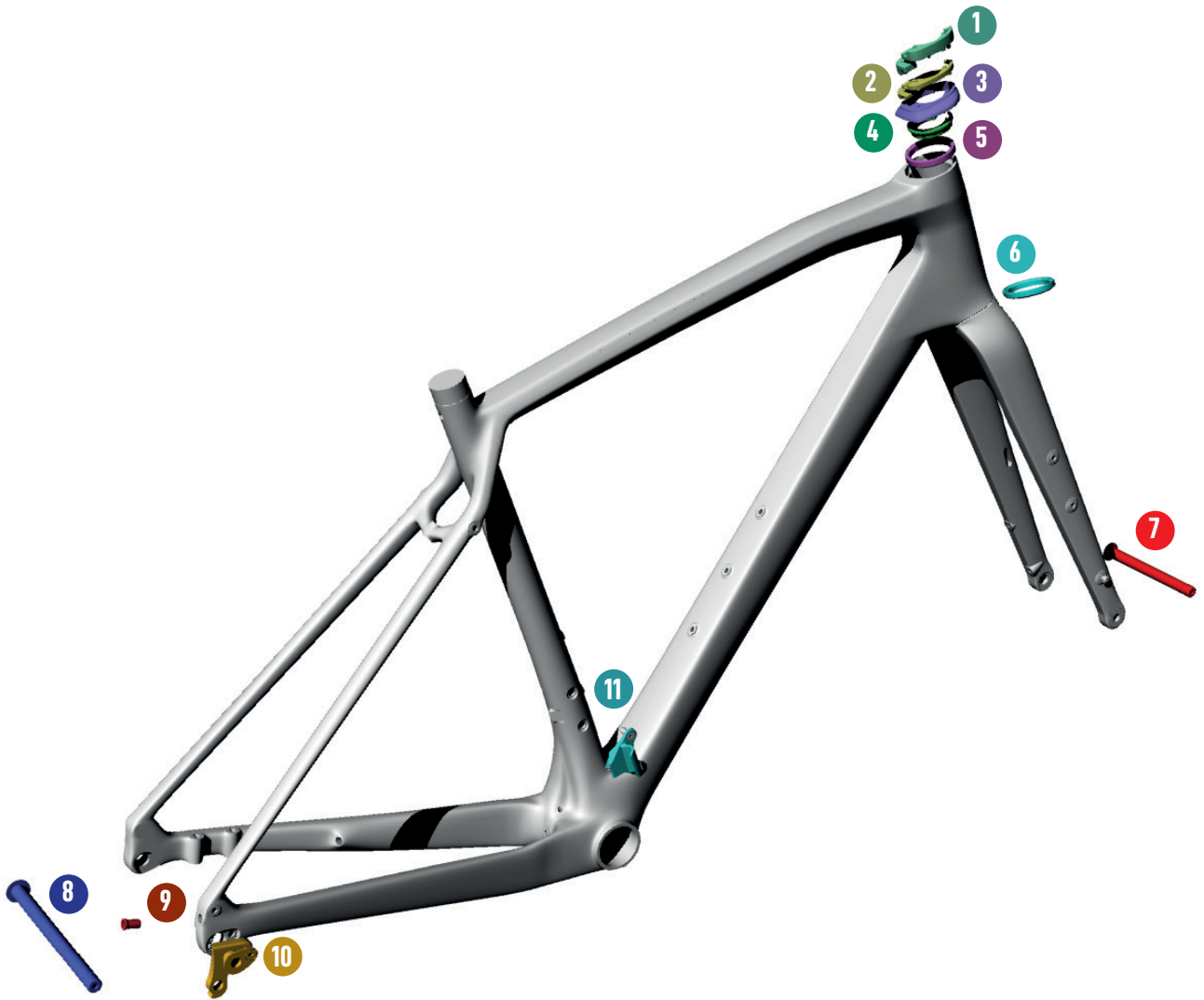
What is the cargo carrying capacity of the Jena?

The Jena can carry up to 15kg of cargo on the front fork and a maximum of 20kgs on the rear stays.

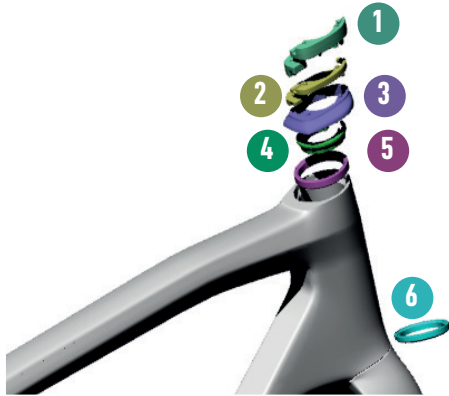


JENA

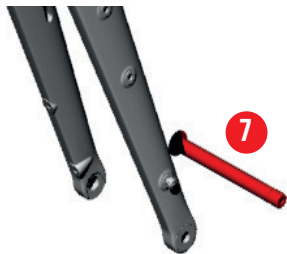
SPARE PARTS



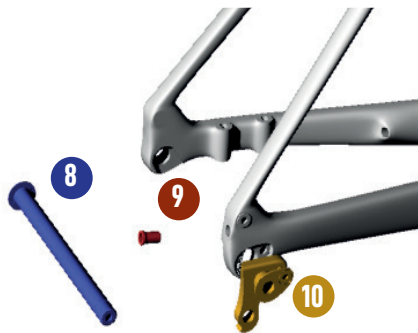
SPARE PARTS



SPARE PARTS	
1	WTP-ZSPACER10 SPACER 10MM (DX+SX)
2	WTP-ZSPACER5 SPACER 5MM (DX+SX)
3	W0TC TOP COVER
4	WTP-2SCOMPRING COMPOSITE COMPRESSION RING
5	WTP-BEARING-SSLIM BEARING SUPERSLIM 39 X 46.9 X 7
6	MR137 FSA BEARING 1-1/4"



SPARE PARTS	
7	WTPTA12125L THRU AXLE FRONT 12X125 WITH



SPARE PARTS	
8	WTPTA12171L THRU AXLE REAR 12X171 WITH LEVER
9	HGACCEP.3 RUBBER PLUG CCN009
10	HGACCE59.5 KIT DROPOUT



SPARE PARTS	
11	WTP-FDHY-FD FD MOUNT



