



WILIER^{SL}

TECHNICAL INTRODUCTION
REV.01

FILANTE^{SL}

In an evolving species, only the most calibrated change will result in progress. What really counts is neither strength nor intelligence. What makes the difference is the ability to adapt to change.

The Filante SL inherits its forms, its lines and its racing spirit from the Filante SLR, our high-end aero racing bike used by professionals in the most important World Tour competitions. What makes the change advantageous is the application of few and simple technical solutions. The different carbon fibre lamination used for the frame gives it a less extreme and more comfortable structure compared to the SLR version. All with a weight gain of just under 150 g for the same size frame.

The new Filante SL mirrors some of the physical traits of the Wilier 0 SL, starting from the handlebar. Behind every decision that led to the creation of this model there is no step back but rather the desire to look ahead, using proprietary technologies wisely and with determination to embrace an even wider audience.



FILANTE^{SL}**WORLD TOUR AERODYNAMIC AND DESIGN**

The carbon fibre is used in a frame that mirrors the lines of the Filante SLR used by the professional cyclists of the Astana Qazaqstan Team. What changes is the frame module, using different fabrics made of composite material to create a new lamination. Though the substance may change, the aerodynamic performance does not.

**SMART INTEGRATION**

No visible cables. The aluminium alloy vertical tube and aero handlebar fully maintain the flair of the Filante product range. A technical choice that makes it possible to contain the price without compromising the performance and the possibility to easily personalise the setup.

**SIX FRAME SIZES, GLOSSY FINISH**

The Filante SL echoes the racing geometries of its big sister, the SLR. Six available frame sizes: XS, S, M, L, XL, XXL. Three available colours with glossy finish.



FILANTE^{SL}

SL PHILOSOPHY

In addition to expanding the product range, the intention of each SL series bike is to provide the best quality/price/performance ratio. The use of technologies and setups that are less extreme aims to preserve the overall quality of each product. Did we succeed? You be the judge



FILANTE^{SL}

COLOR	BLACK
FINISH	GLOSSY
COLOR CODE	F11



COLOR	SILVER BLACK
FINISH	GLOSSY
COLOR CODE	F12



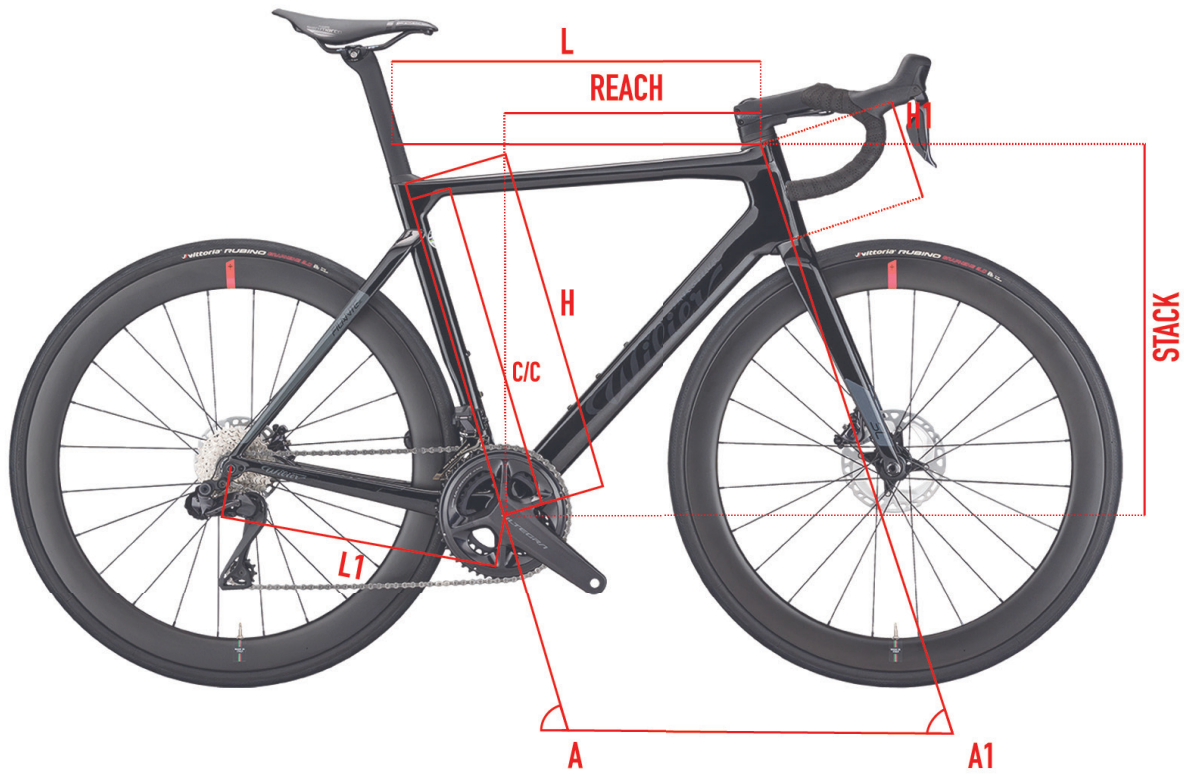
FILANTE^{SL}

COLOR	RED , BLACK
FINISH	GLOSSY
COLOR CODE	F15



FILANTE^{SL}

GEOMETRIES AND SIZES

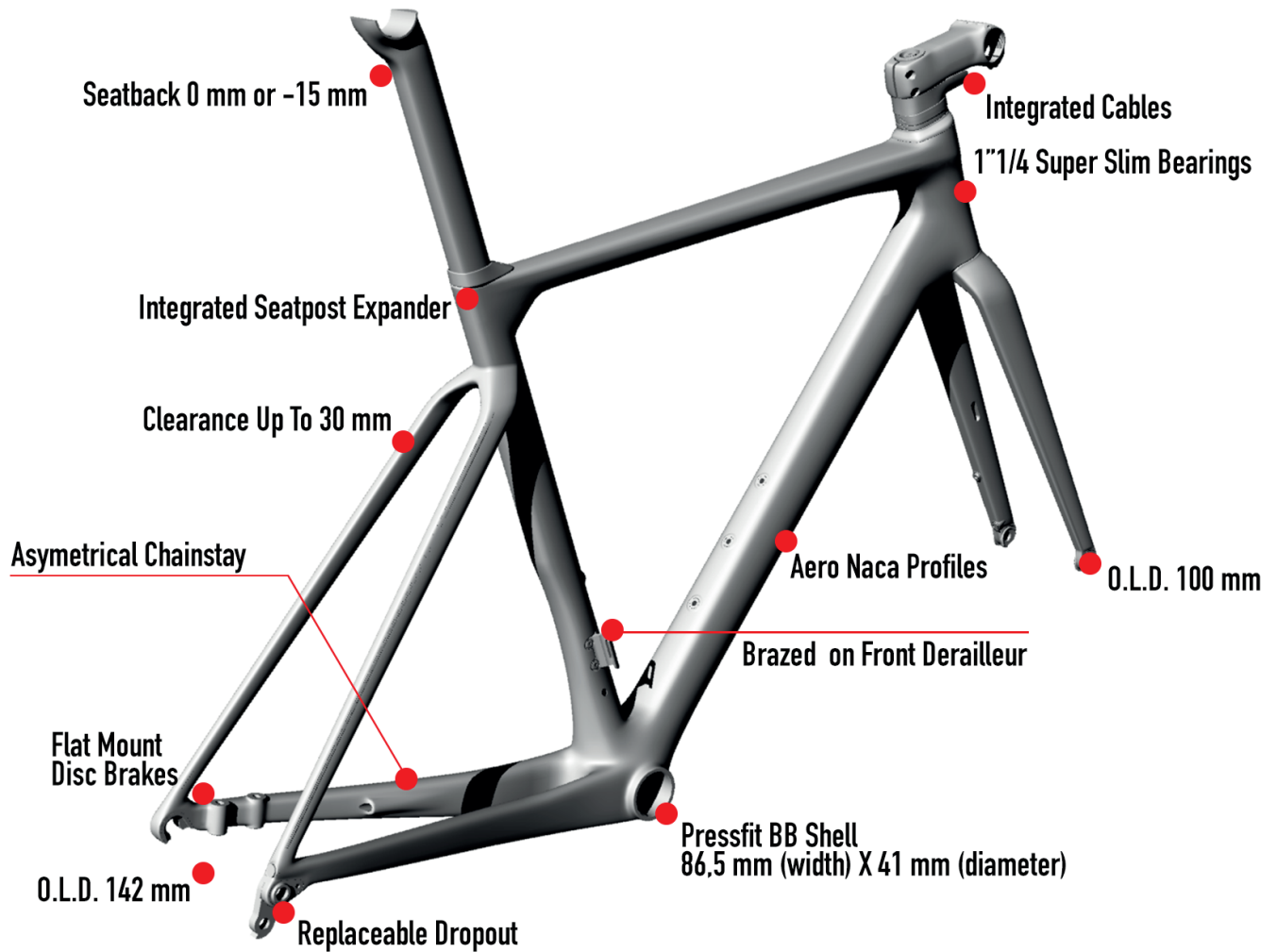


	C/C	L	H	A	H1	L1	A1	REACH	STACK	WHEELBASE
SIZE	[cm]	[cm]	[cm]	[°]	[cm]	[cm]	[°]	[mm]	[mm]	[mm]
XS	43.2	51.5	45	75.2	10.4	40.7	70.8	380	505	981
S	46.2	53	48	74.5	11.9	40.7	72	384	521	984
M	48.2	54.3	50	74	13.5	40.8	72.5	388	538	990
L	50.2	55.6	52	73.5	15.4	41	73	391	555	997
XL	52.2	57	54	73	16.6	41.1	73	395	571	1002
XXL	54.2	58.3	56	72.5	18.1	41.1	73.5	399	587	1006



FILANTE^{SL}

KEYPOINTS



FRAME AND TECHNICAL SPECS DETAILS - DISC VERSION

HEADTUBE	1"1/4 - 1"1/4
UPPER BEARING	WTP-BEARING-SSLIM 39X46.9X7 +WTP-2SCOMPRING
LOWER BEARING	FSA MR137
FRONT FORK O.L.D.	100mm - TH-AXLE122F
REAR STAYS O.L.D.	142mm - TH-AXLE168R
BB SHELL	SHIMANO PRESS FIT (86.5 WIDE x 41 diameter)
SEAT POST	WILIER SEATPOST 0/-15
FRONT DERAILLEUR TYPE	BRAZED ON
SEATPOST EXPANDER	WTP-SPEXP



FILANTE^{SL}

FAQ

How much does the frame weigh?

The frame weighs 1010 grams for a painted size M.

Do the integrated cables pass through the handlebar?

The cables are integrated inside the frame, running through the superthin bearings but not inside the handlebar and the stem. This allows quick and economical maintenance and/or part replacement.

Is the superthin bearing available as a spare part?

Yes. The upper superthin bearing is not normally available on the market but is a design owned by Wilier Triestina and will only be available in authorized dealer's shops.

Which axles are available for Filante SL?

The design of the frame is of the Speed Realease type. The bike is shipped with a traditional full-extension thru-axle system as standard model. Mavic Speed Release thru-axles can be purchased from authorised dealers.

What configurations are possible with the Filante SL?

The Filante SL can be assembled only with electronic shifting and disc brakes.

What tires can I install on Filante SL?

The standard bicycle is fitted with 28 mm tires. The frame can accommodate tires with a maximum of 30 mm of actual width.

Can I install triathlon accessories?

Yes. Triathlon armrests can be installed on the Barra SL handlebar because the it has a 31.8 mm round diameter.

Can I install other types of handlebar stems on the Filante SL?

No. The Stemma SL handlebar stem must be used. It might be possible to switch out the handlebar for other 31.8 mm diameter products or other integrated / semi-integrated Wilier Triestina handlebars (Filante Bar, 0-Bar, J-Bar and Stemma).

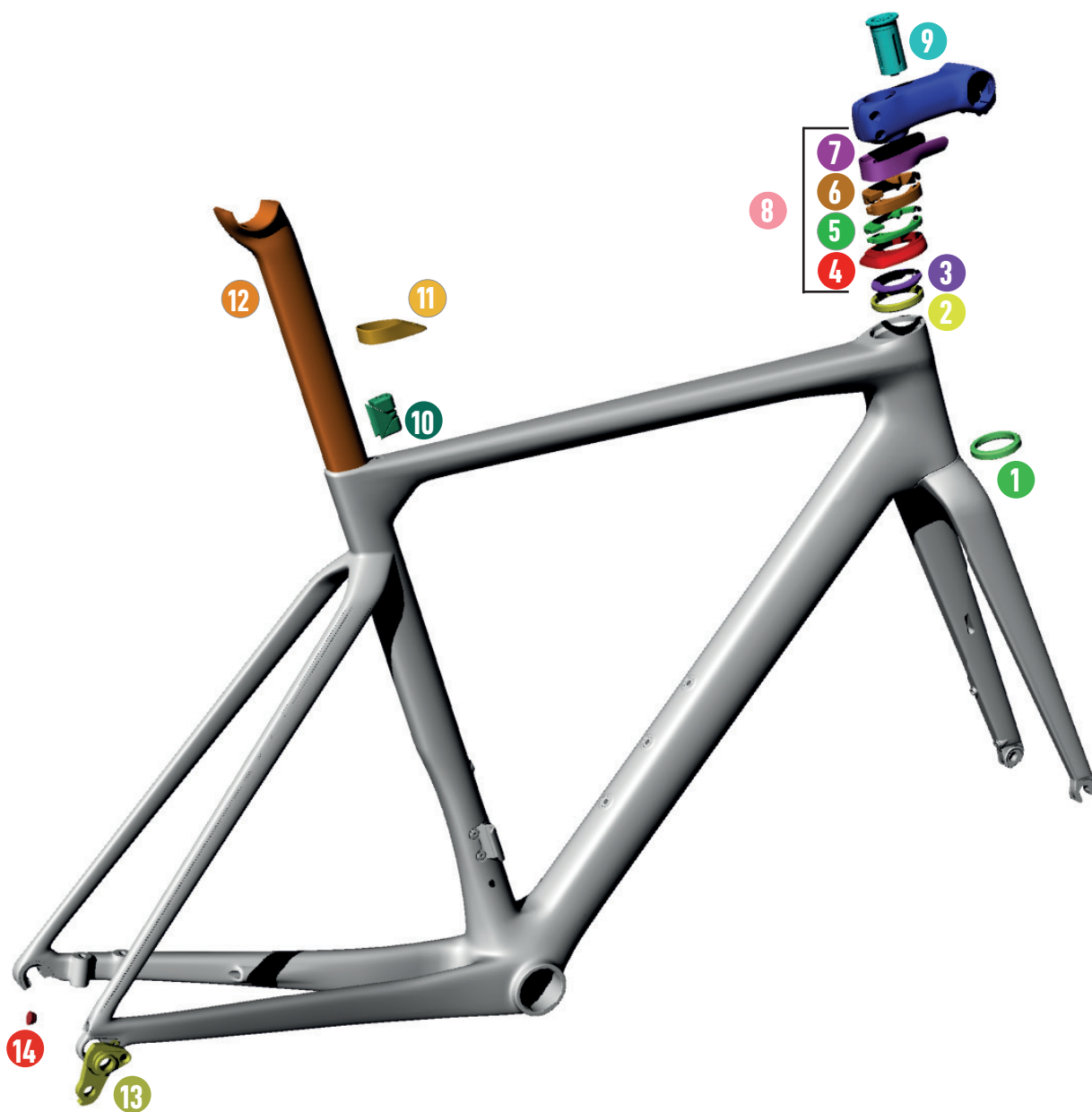
Are the frame parts the same as the Filante SLR?

Yes. Seatpost, spacers, top cover, dropout and all metal parts are the same as Filante SLR.

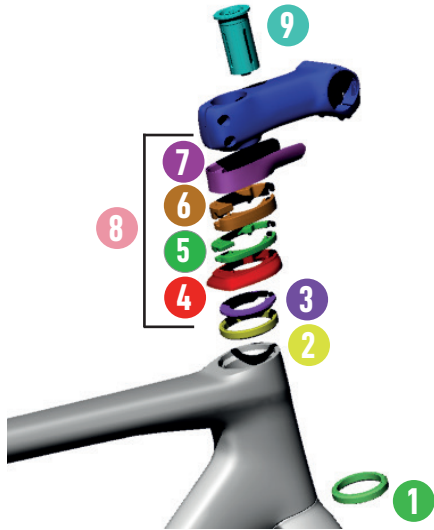


FILANTE^{SL}

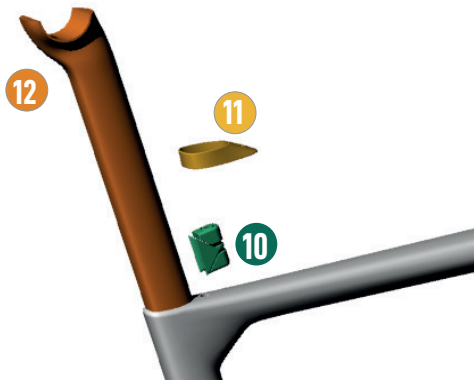
SPARE PARTS



FILANTE^{SL}



SPARE PARTS		
1	MR137	FSA BEARING 1-1/4"
2	WTP-BEARING-SSLIM	BEARING SUPERSLIM 39 X 46.9 X 7 SSLIM
3	WTP-2SCOMPRING	COMPOSITE COMPRESSION RING
4	W0TC	TOP COVER
5	WTP-ZSPACER5	SPACER 5MM (DX+SX)
6	WTP-ZSPACER10	SPACER 10MM (DX+SX)
7	WTP-STEMCC	RITCHEY STEM CABLE GUIDE FOR BARRA SL
8	WKITCCOL	KIT SPACERS FILANTE SL
9	EXROUFK	ROUND FORK EXPANDER



SPARE PARTS		
10	WTP-SPEXP	FILANTE SEATPOST EXPANDER
11	WTP-SPSHIELD-F	SEATPOST RUBBER SEAL FILANTE
12	STFILA0	SEATPOST FILANTE ZERO OFFSET
12	STFILA-15	SEATPOST FILANTE -15 OFFSET



SPARE PARTS		
13	WORDROP	DROPOUT FILANTE SL
14	CCN009-1	PLUG FOR INTERNAL FRAME ROUTING SH.DI2



