



GRANVTURISMO^{SLR}

TECHNICAL INTRODUCTION
REV.01

GRANTURISMO^{SLR}

Granturismo SLR is the racing bike designed to bring out the utmost performance and comfort. With Granturismo SLR you will be able to travel long distances, minimising postural stress thanks to the special endurance geometries and to the ACTIFLEX 2.0 system, a renewed version of the rear micro-shock absorber developed in 2017 for the Cento10 NDR.



GRANTURISMO^{SLR}**ACTIFLEX 2.0**

The heart of Granturismo SLR is the Actiflex 2.0 vibration damping system that enables the rear wheel to obtain up to 5mm in vertical travel. The 2.0 is the updated version of Actiflex that was featured on Cento10 NDR, winner of the 2017 Eurobike Award and of the prestigious Tour Magazin Reader's Award in 2018.

**NEW DESIGN, HIGHER EFFICIENCY**

Actiflex 2.0 gives Granturismo SLR a smooth and comfortable ride. Torsional stiffness and responsiveness are guaranteed by numbers very close to those featured on other Wilier racing bikes, thanks to the bridge on the rear stays and the new positioning of Actiflex near to where the seat tube and top tube intersect. When redesigning Actiflex, one of the main goals was to achieve maximum frame integration, not just for aesthetic purposes but also to make it more functional. In its new position, Actiflex is protected from dirt, mud, sand and rain, offering an ideal solution to allow the four bearings to work easily without having to worry about future maintenance. The double-screw locking system makes disassembling Actiflex 2.0 easy.

**TWO TYPES OF ELASTOMER**

The rear wheel travel is regulated by an elastomer made of viscoelastic material. In models featuring Dura Ace Di2 12V and Sram Red AXS setups, the elastomer is replaced with a 3D printed conformal lattice structure, a solution that reduces the overall weight of the frame by a further 20g.

17 WTP-ACT2V3DS / WTP-ACT2V3DH



GRANTURISMO^{SLR}

RACING COMFORT GEOMETRIES

The frame's geometries play a fundamental role when it comes to endurance bikes. To guarantee the highest racing and comfort levels, different frame tube proportions must be taken into account. The position is slightly shorter (less reach compared to bikes with traditional racing geometries) and higher (greater stack in comparison to racing geometries).

This combination of reach and stack provides a more comfortable position without the need for spacers between the handlebar stem and the frame. How many times do cyclists ride pure racing bikes with centimetres of spacers on the head tube? With Granturismo SLR the bike will appear more harmonious, well-proportioned, and balanced while maintaining its racing character.



HIGH END CARBON

The carbon mix used for Granturismo SLR is HUS-MOD combined with Liquid Crystal Polymer, the special fibre incorporated in the carbon mesh that adds vertical elasticity while increasing torsional stiffness. This solution is also widely used in other top-range products such as Filante SLR and Wilier 0 SLR.

AERODYNAMICS IN THE ENDURANCE WORLD AS WELL

Cycling long distances means spending long hours on the saddle. And, although Granturismo SLR doesn't offer maximum competition performance, aerodynamics is still important, even in a bike of this type.

Because when you're spending hours on the saddle, even small details and enhancements can reduce fatigue. So, we've added a number of characteristics derived from Filante SLR (our aerodynamic competition bike). In addition to the optimised tube section, we've considered the very wide fork crown, the integrated monocoque handlebar, and total cable integration.

GRANTURISMO^{SLR}

WHEEL CLEARANCE

A wide fork crown improves aerodynamics and offers a generous wheel clearance. Wheels with tires up to a maximum width of 32 mm can be installed on Granturismo SLR, a perfect size for a modern bike like this one bred for endurance.



CARBON MONOCOQUE HANDLEBAR

On Granturismo SLR, we've included the monocoque handlebar, which we usually install on Wilier 0 SLR, our flagship climbing bike. The 0 Bar has a rounded ergonomic grip that's more comfortable than the one on our aero Filante Bar. The spacers, which are the same as those used on the Filante SLR, adapt it perfectly to the frame. And don't forget that the 0 Bar monocoque handlebar houses and routes the brake and derailleur cables inside the frame, protecting them from air friction and giving the Granturismo SLR the clean and pure lines that typify Wilier Triestina's high-end products. Granturismo SLR is also compatible with all Wilier Triestina monocoque and modular handlebars.



REMOVABLE DERAILLEUR SUPPORT

The derailleur support is removable, just like on Rave SLR. That's because we believe that 1x assemblies will be used increasingly in the near future, even on road bikes not intended for use in competition. For the 1x assembly, we've replaced the derailleur support with a flat plate to preserve the bike's sleek look even without the front derailleur.



EASY-FIT SPACERS

The spacers between the frame head tube and the handlebar are made of a high-rigidity composite material, with a special cavity for routing the cables. They consist of two parts for quick assembly and disassembly, without interfering with the cables that run from the handlebar to the frame.



GRANTURISMO^{SLR}

COLOR	FADED SILVER, EMERALD
FINISH	GLOSSY
COLOR CODE	R9



COLOR	FADED BLACK, GREY
FINISH	MATT
COLOR CODE	R10

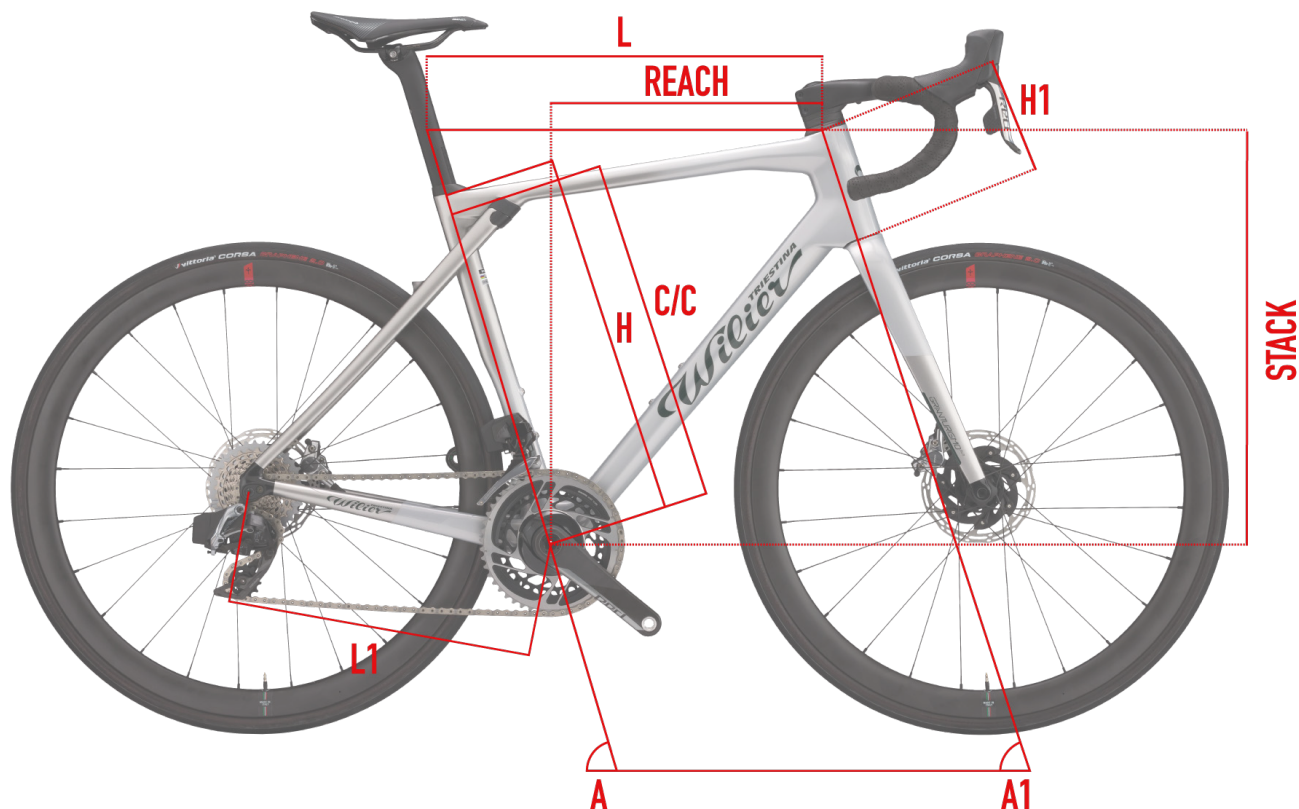


GRANTURISMO^{SLR}

COLOR	FADED RED, WHITE
FINISH	GLOSSY
COLOR CODE	R8



GEOMETRIES AND SIZES

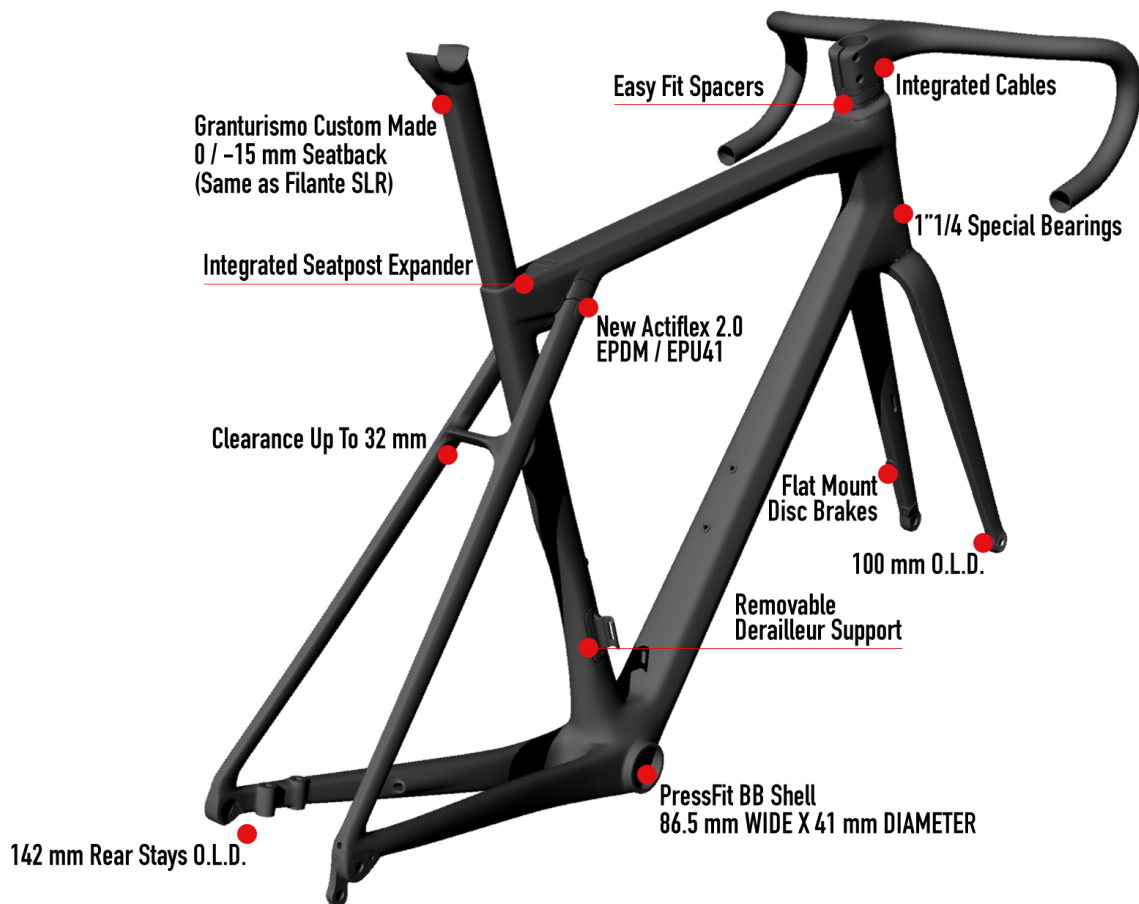


	C/C	L	H	A	H1	L1	A1	REACH	STACK	WHEELBASE
SIZE	[cm]	[cm]	[cm]	[°]	[cm]	[cm]	[°]	[mm]	[mm]	[mm]
XS	40.5	51.7	46	74.5	11.7	40.6	71	369	527	974
S	43.5	53.2	49	74	13.6	40.6	71.5	374	546	982
M	45.5	54.7	51	73.5	15.7	40.8	72	379	566	991
L	47.5	55.8	53	73.5	17.7	40.8	72.5	384	586	998
XL	50.5	57.4	56	73	19.6	41.1	72.5	389	604	1012
XXL	53.5	59.2	59	72.5	21.7	41.1	72.5	395	625	1024



GRANTURISMO^{SLR}

KEYPOINTS



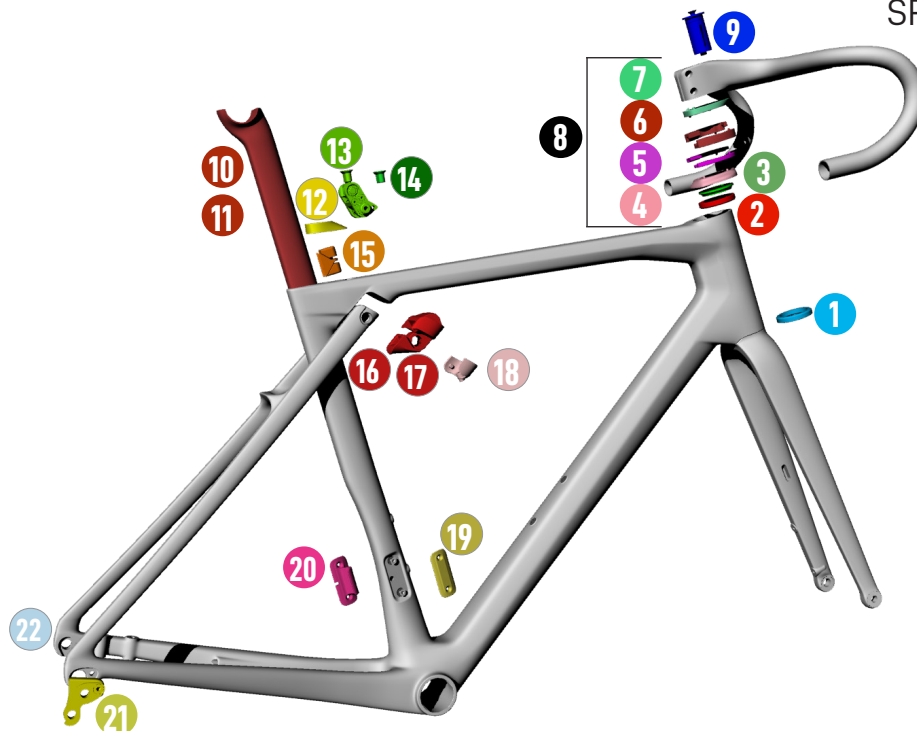
FRAME AND TECHNICAL SPECS DETAILS - DISC VERSION

HEADTUBE	1"1/4 - 1"1/4
UPPER BEARING	WTP-BEARING-SS 39 X 46.9
LOWER BEARING	FSA MR137
FRONT FORK O.L.D.	100 mm
REAR STAYS O.L.D.	142 mm
BB SHELL	SHIMANO PRESS FIT (86.5 wide x 41 diameter)
SEAT POST	WILIER SEATPOST 0/-15
FRONT DERAILLEUR TYPE	BRAZED ON
SEATPOST EXPANDER	WTP-SPEXP



GRANTURISMO^{SLR}

SPARE PARTS

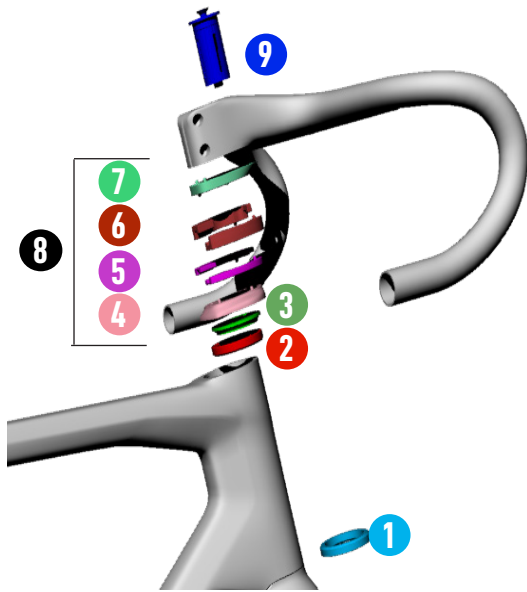


SPARE PARTS B2B CODES

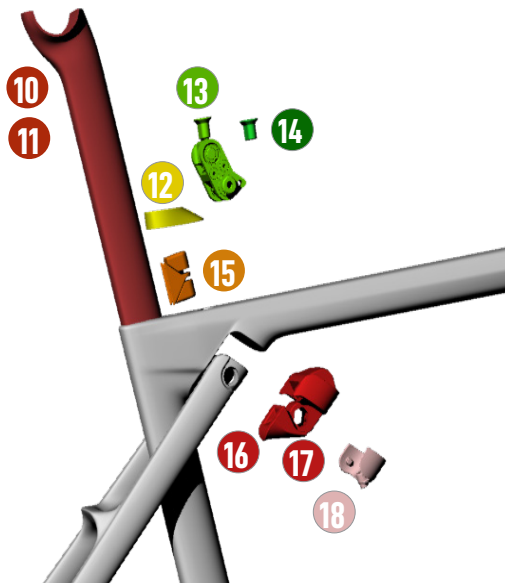
1	MR137	FSA BEARING
2	WTP-BEARING-SSLIM	SUPER SLIM BEARING
3	WTP-2SCOMPRING	COMPRESSION RING FOR SUPER SLIM BEARING
4	W0TC	TOP COVER
5	WTP-ZSPACER5	SPACER 5MM
6	WTP-ZSPACER10	SPACER 10MM
7	W0TS	TOP SPACER
8	W0KITS	SPACERS KIT
9	EXROUFK	ROUNDED FORK EXPANDER
10	STFILA-15	SEATPOST -15OFFSET
11	STFILA0	SEATPOST 0 OFFSET
12	WTP-SPSHIELD-F	RUBBER PLUG - SEATPOST
13	WTP-GRFIX	FIXATION SYSTEM FOR ACTIFLEX 2.0
14	WTP-GRBLOCK	SERRATION BLOCK FOR ACTIFLEX 2.0
15	WTP-SPEXP	SEATPOST EXPANDER
16	WTP-ACTFS / WTP-ACTFH	ACTIFLEX 2.0 SOFT / HARD VERSION
17	WTP-ACT2V3DS / WTP-ACT2V3DH	LACTICE ADSORBER SOFT/ HARD 3D PRINTED
18	WTP-ACTCOV	ACTIFLEX 2.0 COVER
19	WTP-COVFD	FIXATION SYSTEM FOR ACTIFLEX 2.0
20	WTP-REMFd	REMOVABLE FRONT DERAILLEUR SUPPORT
21	WORDROP	REAR DROPOUT
22	CCN009-1	RUBBER PLUG REAR STAY Di2



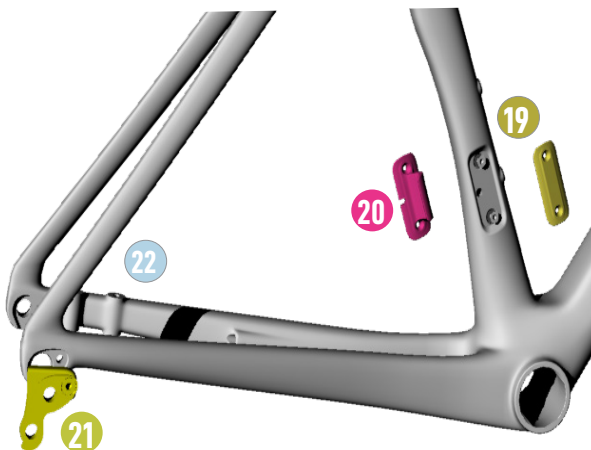
GRANTURISMO^{SLR}



SPARE PARTS		
1	MR137	FSA BEARING 1-1/4"
2	WTP-BEARING-SSLIM	WILIER BEARING SUPERSLIM
3	WTP-COMPRING-SS	WILIER FRAME RING SUPERSLIM
4	W0TC	TOP COVER
5	WTP-ZSPACER5	SPACER 5MM
6	WTP-ZSPACER10	SPACER 10MM
7	W0TS	TOP SPACER
8	W0KITS	SPACERS KIT
9	EXROUFGK	ROUND FORK EXPANDER



SPARE PARTS		
10	STFILA-15	SEATPOST -150OFFSET
11	STFILA0	SEATPOST 0 OFFSET
12	WTP-SPSHIELD-F	RUBBER PLUG - SEATPOST
13	WTP-GRFIX	FIXATION SYSTEM FOR ACTIFLEX 2.0
14	WTP-GRBLOCK	SERRATION BLOCK FOR ACTIFLEX 2.0
15	WTP-SPEXP	SEATPOST EXPANDER
16	WTP-ACTFS / WTP-ACTFH	ACTIFLEX 2.0 SOFT / HARD VERSION
17	WTP-ACT2V3DS / WTP-ACT2V3DH	LACTICE ADSORBER SOFT/ HARD 3D PRINTED
18	WTP-ACTCOV	ACTIFLEX 2.0 COVER



SPARE PARTS		
19	WTP-COVFD	FIXATION SYSTEM FOR ACTIFLEX 2.0
20	WTP-REMFD	REMOVABLE DERAILLEUR SUPPORT
21	WORDROP	REAR DROPOUT
22	CCN009-1	RUBBER PLUG REAR STAY Di2



FAQ

What is the main feature of Granturismo SLR?

Granturismo SLR is the Wilier Triestina high-end endurance bike for professional use. Thanks to Actiflex 2.0 and relaxed geometries, Granturismo SLR is the ideal bike for spending hours on the saddle, comfortably.

How much does the frame weigh?

The frame weighs 1100 grams for a painted size M, including the Actiflex 2.0 cushioning system

What transmissions can be installed on Granturismo SLR?

Granturismo SLR is intended for professionals and anyone who wants a high performance bike while maintaining a high level of comfort. The bike can only be equipped with electronic shifting and disc brakes.

What tires can be installed on Granturismo SLR?

The standard bicycle is fitted with 28 mm tires. The frame can accommodate tires with a maximum of 32 mm of actual width.

What type of stem/handlebar can I install on Granturismo SLR?

The standard bicycle is fitted with 0-Bar, available in five different sizes. With Wilier Triestina easy-fit spacers, Filante Bar, J-Bar, Stemma and Stemma SL can also be installed.

Do the integrated cables pass through the handlebar?

The cables are integrated inside the frame, running through the superthin bearing and inside the integrated handlebar.

Is the superthin bearing™ available as a spare part?

Yes. The upper superthin bearing is not normally available on the market but is a design owned by Wilier Triestina and will only be available at Wilier Triestina official dealers.

Is Actiflex 2.0 available in other versions?

Actiflex 2.0 is the new suspension system introduced for Wilier Triestina's road-bike line. It's made to absorb vibrations caused by uneven ground and comes in two different versions: soft (for sizes XS, S, and M) and hard (for sizes L, XL, and XXL). Both versions can be ordered separately from any official Wilier Triestina dealer. The top-range setups will be factory-fitted with 3D printed conformal lattice elastomer. However, it will also be available as a spare part from official Wilier Triestina dealers.

Which axles are available for Granturismo SLR?

Granturismo SLR can be equipped with traditional thru axles. The front axle measures 12x100, while the rear axle is 12x142.



