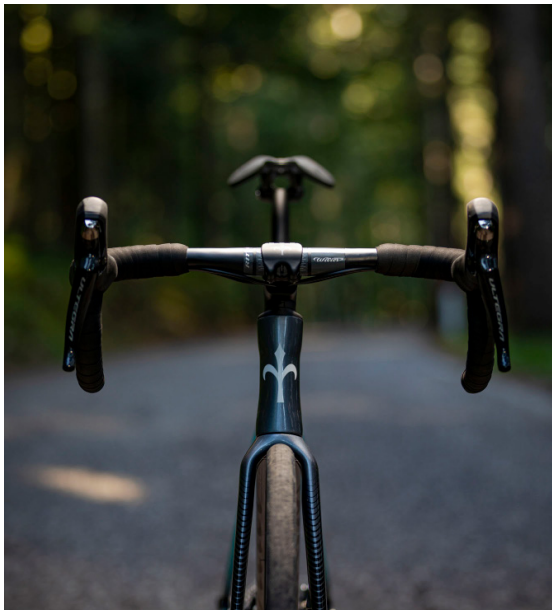






Last year's Wilier 0 project has been a tremendous success. Beyond the sales numbers, we recall the amazed faces of the Astana Pro Team riders after test the Wilier 0 SLR for the first time. In short, it is a perfect frame: very lightweight, stiff, easy to steer and high performance. To date, the Wilier 0 platform is only available in the SLR version for the top of the range with electronic shifting only. With Wilier 0 SL, the intention is to reach a new sector of the public that will benefit from the design. Basically, the frame has the same design as its big brother Wilier 0 SLR, with the possibility of adding mechanical disc transmission and a handlebar/stem combo without losing the clean look, with the cables integrated inside the frame.





STEERING QUALITY

Wilier 0 SL copies the steering qualities (and therefore geometries) of the SLR version.



COMPETITIVE PRICE

We bring the qualities of the Wilier 0 SLR to a wider audience.





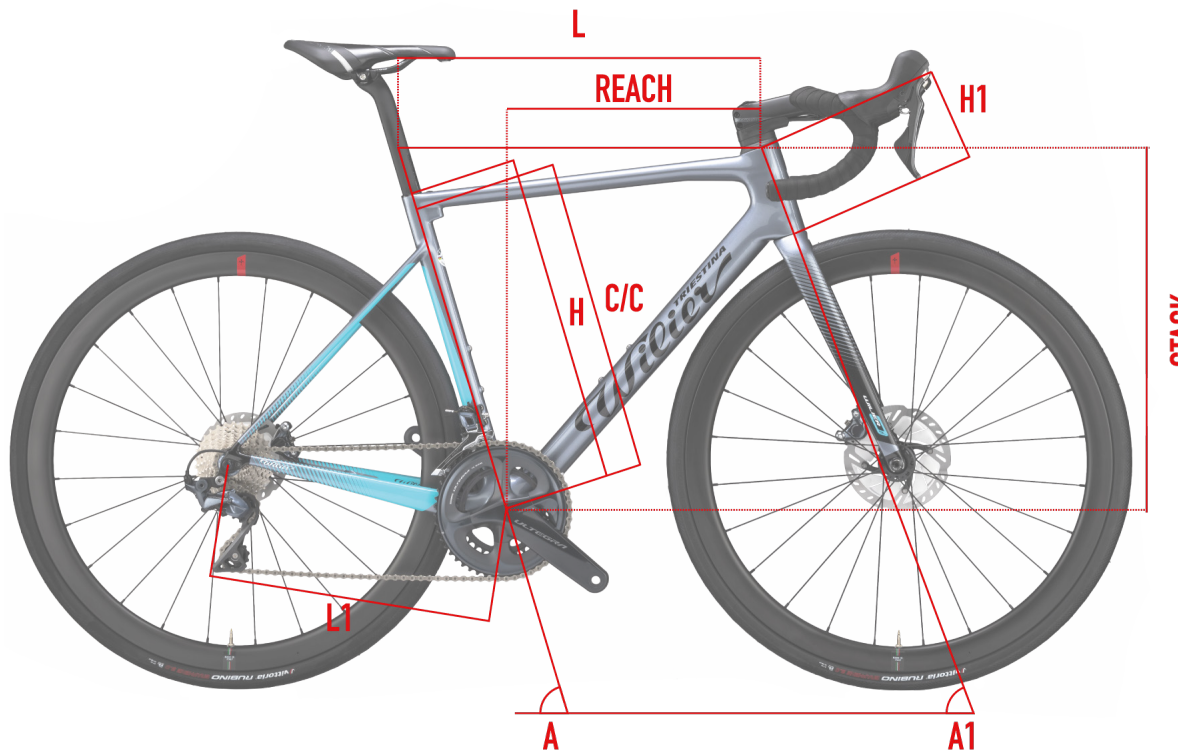
COLOR	BLACK / RED
FINISH	MATT
COLOR CODE	E8



COLOR	BLACK / WHITE
FINISH	MATT
COLOR CODE	E4



GEOMETRIES AND SIZES

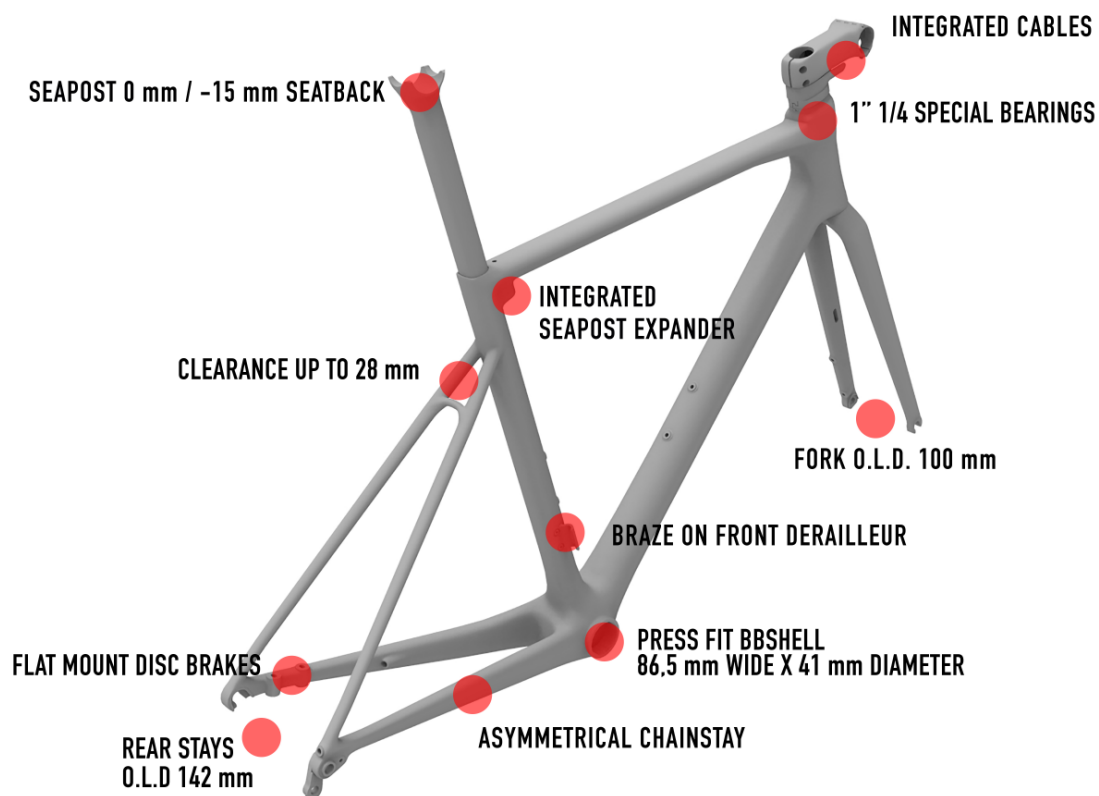


	C/C	L	H	A	H1	L1	A1	REACH	STACK	WHEELBASE
SIZE	[cm]	[cm]	[cm]	[°]	[mm]	[cm]	[°]	[mm]	[mm]	[mm]
XS	41,2	51,1	43	75,2	10,2	40,7	70,5	376	503	977
S	44,2	52,5	46	74,6	11,8	40,7	71,7	381	519	979
M	47,2	54,1	49	74	13,6	40,8	72,15	386	536	988
L	50,2	55,6	52	73,5	15,3	41	72,65	391	554	996
XL	52,2	57,2	54	73	17,2	41,1	72,8	397	572	1008
XXL	54,2	58,7	56	72,6	19,2	41,2	73,1	402	591	1017





KEYPOINTS



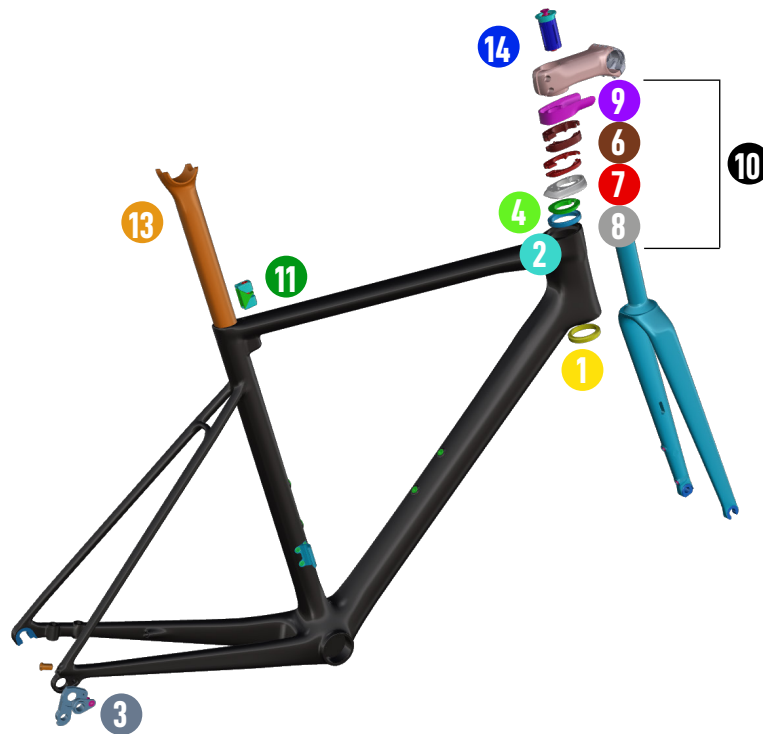
FRAME AND TECHNICAL SPECS DETAILS - DISC VERSION

HEADTUBE	1"1/4 - 1"1/4
UPPER BEARING	WTP-BEARING-SS 39 X 46.9
LOWER BEARING	FSA MR137
FRONT FORK O.L.D.	100 mm - THRUE AXLE 12 x 100 Lreal=119 FILETTO 2 P1
REAR STAYS O.L.D.	142 mm - THRUE AXLE 12 X 142 Lreal=165 FILETTO 2 P1
BB SHELL	SHIMANO PRESS FIT (86.5 wide x 41 diameter)
SEAT POST	WILIER SEATPOST 0/-15
FRONT DERAILLEUR TYPE	BRAZED ON
SEATPOST EXPANDER	W0STEXP - R10





SPARE PARTS



SPARE PARTS B2B CODES

1	MR137	FSA BEARING
2	WTP-BEARING-SSLIM	SUPER SLIM BEARING
3	WORDROP	REAR DROPOUT
4	WTP-COMPRING-SS	COMPRESSION RING FOR SUPER SLIM BEARING
5	HGACCERP.3	RUBBER PLUG - SEATPOST
6	WTP-ZSPACER10	10mm SPACER
7	WTP-ZSPACER5	5mm SPACER
8	W0TC	TOP COVER
9	WTP-STEMCC	CABLE COLLECTOR
10	WKITCCOL	SPACERS KIT
11	W0STEXP - R10	SEATPOST EXPANDER
12	HWT53SP	ZERO SEATPOST -150OFFSET
13	HWT53N-SPV2	ZERO SEATPOST 00OFFSET
14	EXROUFG	EXPANDER FOR ROUNDED FORK
15	LV2720100	MAVIC SPEED RELEASE FRONT
16	LV2720200	MAVIC SPEED RELEASE REAR
17	TH-AXLE122F	THRU-AXLE 122 FRONT
18	TH-AXLE168R	THRU-AXLE 168 REAR
19	LV3300100	SPEED RELEASE W/O LEVER FRONT
20	LV3300200	SPEED RELEASE W/O LEVER REAR





FAQ

How much does the frame weigh?

The frame target weight is 930 grams for a painted size M.

Do the integrated cables pass through the handlebar?

All of the cables are integrated inside the frame, running through the superthin bearings but not inside the handlebar and the stem. This allows quick and economical maintenance and/or part replacement.

Is the superthin bearing available as a spare part?

Yes. The upper superthin bearing is not normally available on the market but is a design owned by Wilier Triestina and will only be available in B2B in the spare parts section.

What type of stem/handlebar can I install on Wilier 0 SL?

The standard bicycle is available only in standard fitting with Stemma SL and Barra SL, in five different sizes. The use of Wilier Triestina carbon spacers also allows the installation of Filante Bar, 0-Bar, J-Bar and Stemma purchased in the aftermarket.

What tires can I install on Wilier 0 SL?

The standard bicycle is fitted with 28 mm tires. The frame can accommodate tires with a maximum of 28 mm of actual width.

What are the sizes of the thru axle system?

The frame design is Speed Release. The bike comes standard with a traditional full pull-out axle. Mavic Speed Release thru axles can be purchased in B2B in the aftermarket.

Are the frame parts the same as the Wilier 0 SLR?

Yes. Seat post, spacers, top cover, drop-out and all metal parts are the same as on the Wilier 0 SLR.

Can I install other types of handlebar stem on the Wilier 0 SL?

No. The Stemma SL handlebar stem must be used. It might be possible to switch out the handlebar for other 31.8 mm diameter products or other integrated / semi-integrated Wilier Triestina handlebars purchased in the aftermarket (Filante Bar, 0-Bar, J-Bar and Stemma)



