



ADL/A2

TECHNICAL INTRODUCTION
REV.01

ADLAR



When riding, for every cyclist it's a true rite of passage. Your frame of mind at the starting point is never the same as when you arrive. Regardless of how you perceive fatigue, you change within. And so does your view of the world around you. Every adventure is an evolution. Adlar originates from this tension. A bike as a medium for giving things true meaning and bringing clarity to your vision of the world. An object that together evolves, changes and transforms itself. Isn't this the definition of gravel? Look at our bikes. Rave SLR: competition. Jena, Jaroon and Jareen: versatile, equipped with different frames in carbon fibre, steel and aluminium, respectively. It was clear that gravel is, and increasingly will be, adventure, a more or less conscious way of capturing its forms and meanings through journey. Ups, downs, chance meetings, hours and hours spent riding in total autonomy, without feeling the rush of time limits. On your own or in company.

Adlar is made for bikepacking, for explorers, for bike travellers. The structure of the carbon fibre frame has been reinforced to allow a maximum additional load of 35 kg. This feature has been paired with new designs, a careful study of the geometries and completely integrated cable routing.



ADLAR



SOMETHING DIFFERENT

The frame weighs 1100 g and comes in five sizes: XS, S, M, L, XL. The geometries derive from the mountain bike: the frame triangle develops horizontally, the reach is quite pronounced. This solutions make it possible to use a shorter handlebar stem that works in synergy with the open steering angle (70°). A transformation that translates into better handling and control on the more demanding trails with a fully loaded bike.



READY FOR CHANGE

The generous tyre clearance is made to accommodate any 52 mm (52-622) gravel tyre up to mountainbike tyres measuring 29 x 2.00". The frame has been designed to fit a fork with extra-length blades. This configuration makes it easier to install a suspension fork (40 mm max travel compatible with the 1"1/4 - 1"1/2 conical headset series) without changing the frame overall geometries. Also, the opening on the fork's right stem allows the passage of the dynamo hub cable, if used. Even the 27.2 mm seatpost can be replaced with a dropper post.



INTEGRATED MUDGUARD

All configurations feature exclusively single-drivetrain transmission. This choice has made it possible to free the vertical tube from the derailleur support. In this area the forms have been squeezed to recreate a sort of small integrated mudguard.



FIXING AND LOAD POINTS

The front and back carriers load the weight of the bags onto the thru axles that pass through the frame and fork. This was done to reduce any structural stress on the Adlar. Other fixing points offer stability and the option of installing a third bottle holder or a tool bag under the down tube, in addition to a top tube bag. The accessories kit is completed with the mudguards (sold separately) and a set of 4 quick-hook bags made in partnership with Miss Grape.



ADLAR

COLOR	GREY, YELLOW
FINISH	GLOSSY
COLOR CODE	C6



COLOR	LIME, BLACK
FINISH	GLOSSY
COLOR CODE	C7



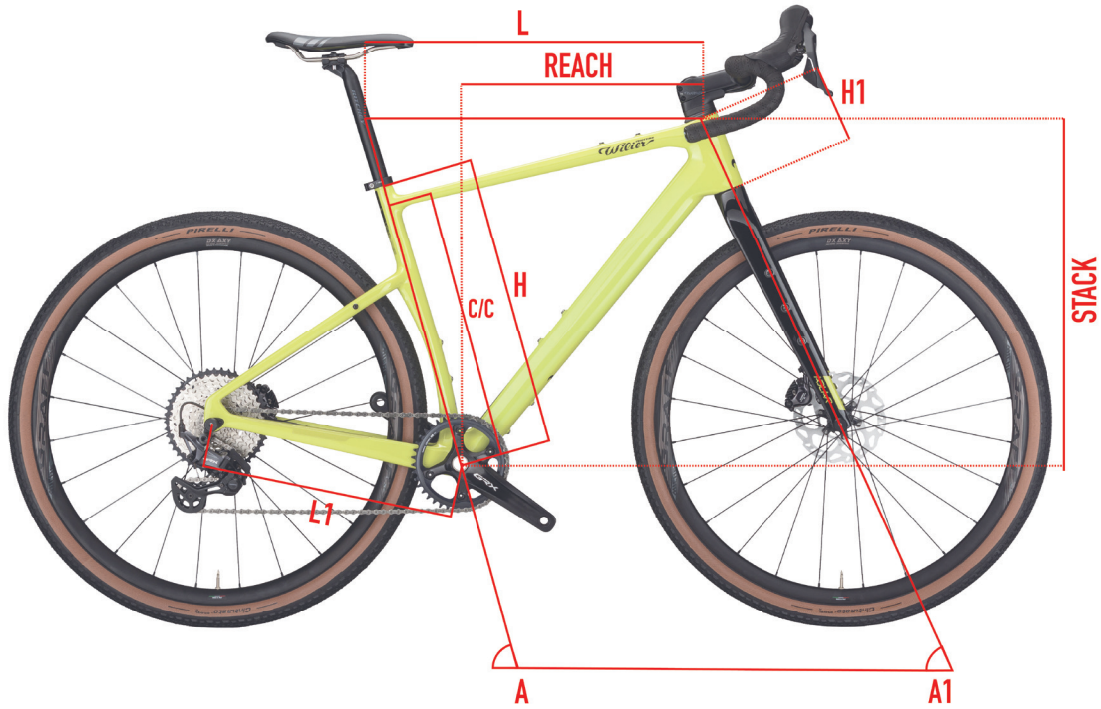
ADLAR

COLOR	BLACK, PURPLE
FINISH	MATT
COLOR CODE	C8





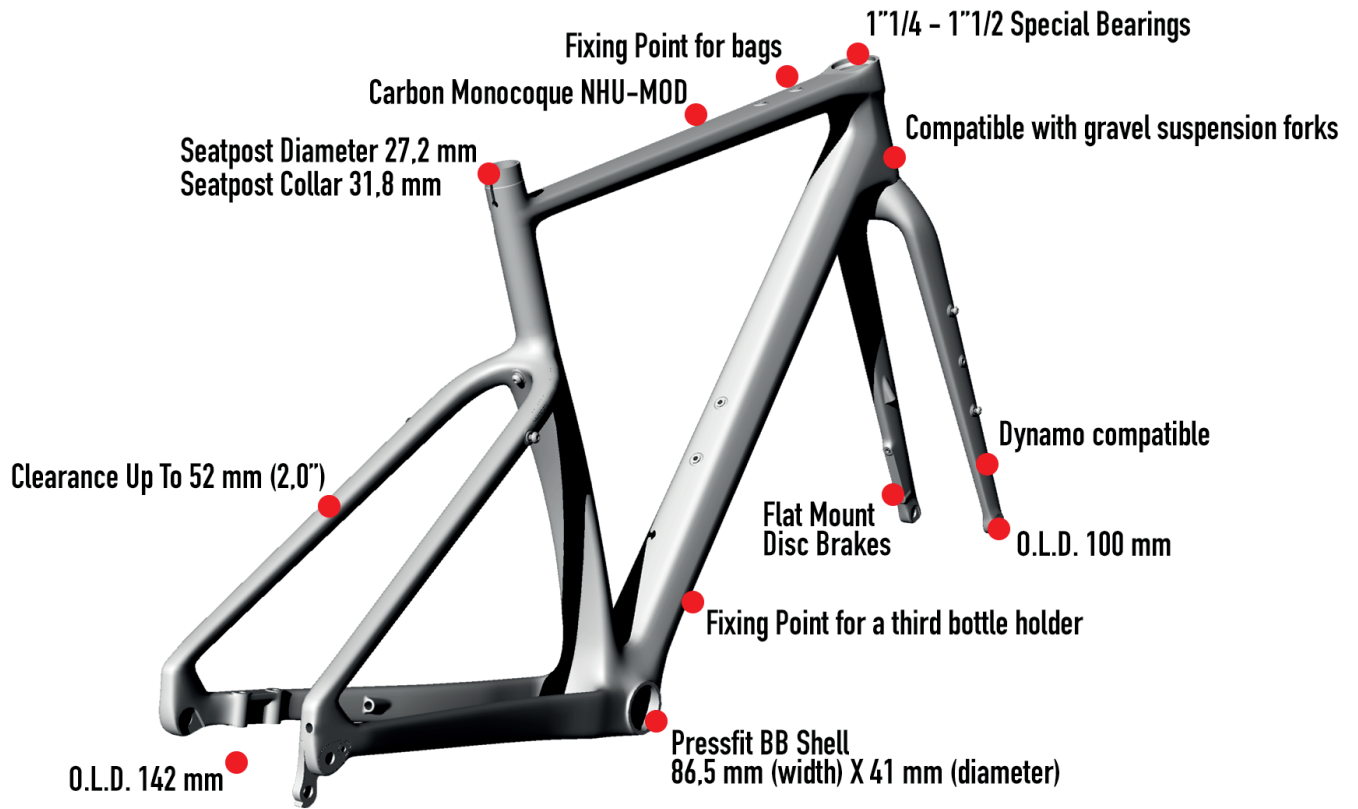
GEOMETRIES AND SIZES



	REACH	STACK	H	C/C	L	A	H1	L1	A1	WHEELBASE
SIZE	[mm]	[mm]	[cm]	[cm]	[cm]	[°]	[cm]	[cm]	[°]	[mm]
XS	395	538	44	38	54.2	75	7.9	42.3	70	1030
S	404	562	47	41	56.2	74.5	10.4	42.3	70	1048
M	413	586	50	44	58.3	74	13	42.3	70	1065
L	422	610	53	47	59.9	74	15.5	42.3	70	1083
XL	431	634	57	51	62.1	73.5	18.1	42.3	70	1101



KEYPOINTS



FRAME AND TECHNICAL SPECS DETAILS	
HEADTUBE	1" 1/4 - 1" 1/2
UPPER BEARING	WTP-BEARING-SSLIM 39X46.9X7 + WTP-2SCOMPRING
LOWER BEARING	33035336013 - RITCHEY HEADSET CARTRIDGE
FRONT FORK O.L.D.	100mm - WTPTA12125
REAR STAYS O.L.D.	142mm - WTPTA12171
BB SHELL	SHIMANO PRESS FIT (86.5 WIDE X 41 diameter)
SEAT POST	ROUND DIAMETER 27.2mm



ADLAR

FAQ

Which components are standard in setups that feature the bikepacking kit?

Setups that feature the bikepacking kit include the front carrier, the rear carrier, the fixing pins and a set of 4 bags.

How are the carriers mounted on the bike?

The carriers can be mounted on the bike using the provided fixing pins.
The front pin measures 12x157 – M12x1.5, while the rear pin measures 12x197 – M12x1.5

Can I mount a front derailleur on the bike?

No, the Adlar is not designed for mounting a front derailleur; therefore, it is impossible to fit a double crankset.

Can I install 27.5" wheels?

The Adlar can accommodate 27.5" wheels. However, the geometry of the frame is designed for 29" wheels, which already provides a 52 mm wheel clearance.

Can I fit mudguards?

Yes, the Adlar can be fitted with Wilier Triestina mudguards that are compatible with the design of the bike and carriers. The mudguards can be purchased from Wilier Triestina's Official Dealers.

Can I install hubs with dynamo?

Yes, the Adlar frame has been designed also with the possible use of front hubs with dynamo in mind. A dynamo can be installed in the front hub and running the light source power supply cable inside the fork.

Can I install suspension forks on the Adlar?

The Adlar has been designed to be compatible with some of the most modern suspension forks the market has to offer.
The head tube measures 1-1/4" at the top, 1-1/2" at the bottom.
The installation of a suspension fork does not compromise the final geometry of the bike.

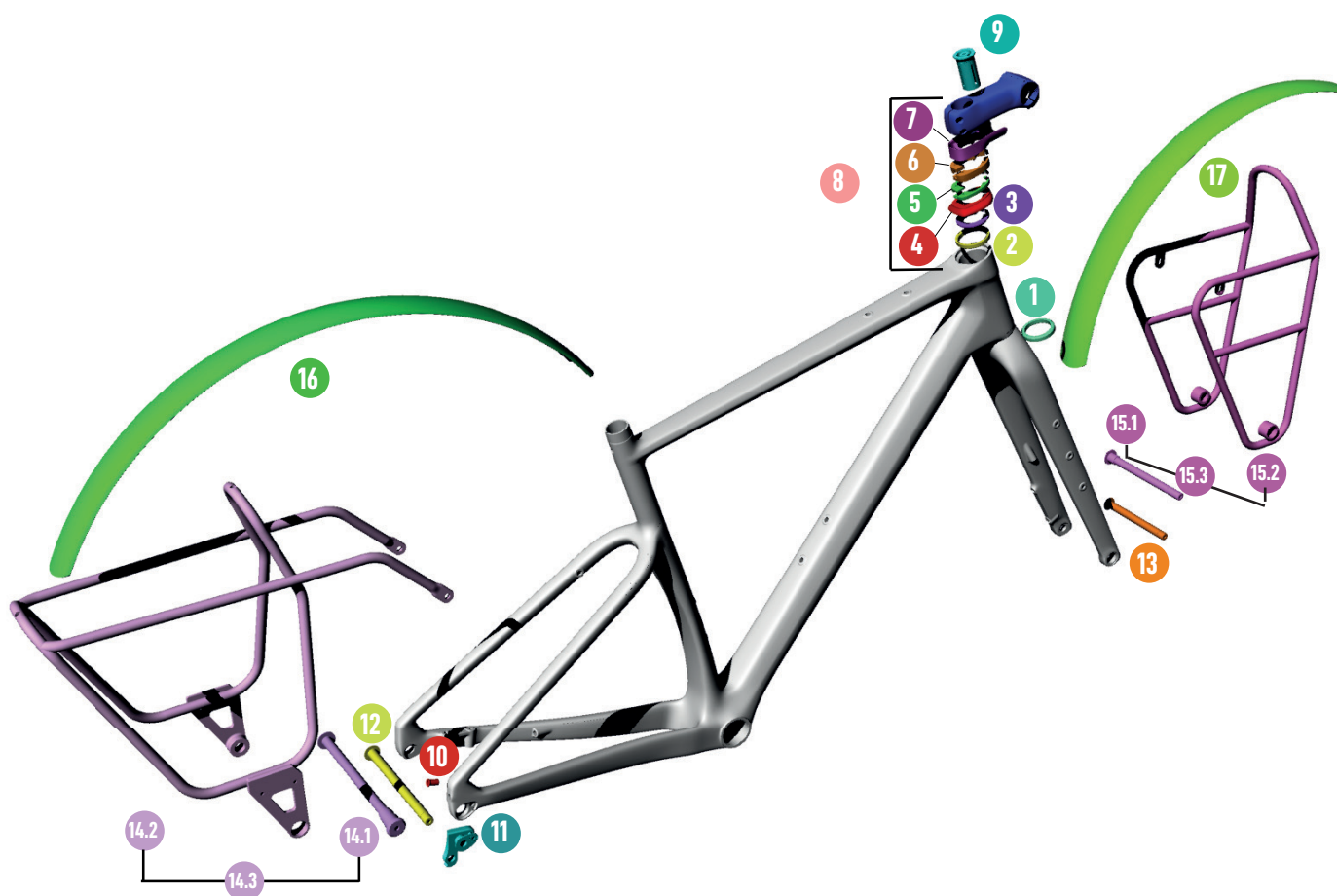


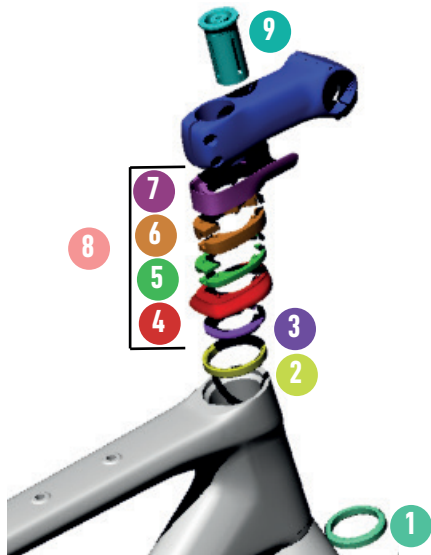
8

WILIERPEDIA 2024

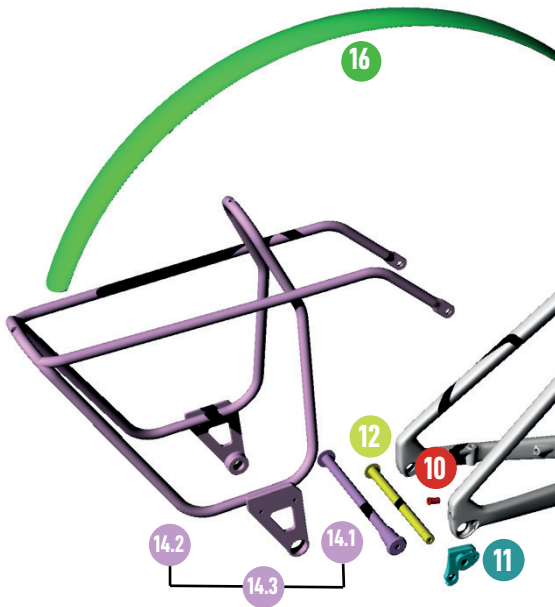
GRAVEL COLLECTION

SPARE PARTS

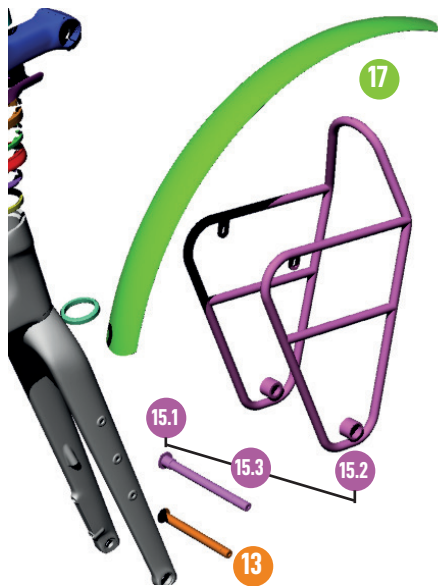




SPARE PARTS		
1	33035336013	RITCHEY HEADSET SEAL CARTRIDGE HT52-56MM
2	WTP-BEARING-SSLIM	BEARING SUPERSLIM 39 X 46.9 X 7 SSLIM
3	WTP-2SCOMPRING	COMPOSITE COMPRESSION RING
4	W0TC	TOP COVER
5	WTP-ZSPACER5	SPACER 5MM (DX+SX)
6	WTP-ZSPACER10	SPACER 10MM (DX+SX)
7	WTP-STEMCC	RITCHEY STEM CABLE GUIDE FOR BARRA SL
8	WKITCCOL	KIT SPACERS ADLAR
9	EXROUFG	ROUND FORK EXPANDER



SPARE PARTS		
10	CCN009-1	PLUG FOR INTERNAL FRAME ROUTING
11	HGACCE59.5	REAR DROPOUT
12	WTPTA12171	THRU AXLE REAR 12X171
14.1	WTPTA12200	THRU AXLE REAR 12X200 ADLAR
14.2	WT-RACKSR	REAR RACK
14.3	WT-REARKBP	REAR KIT BIKE PACKING ADLAR (WTPTA12200 + WT-RACKSR)
16	WT-MUDGR	REAR MUDGUARD



SPARE PARTS		
13	WTPTA12125	THRU AXLE FRONT 12X125
15.1	WTPTA12160	THRU AXLE FRONT 12X160 ADLAR
15.2	WT-RACKSF	FRONT RACK
15.3	WT-FRONTKBP	FRONT KIT BIKE PACKING ADLAR (WTPTA12160 + WT-RACKSF)
17	WT-MUDGF	FRONT MUDGUARD



